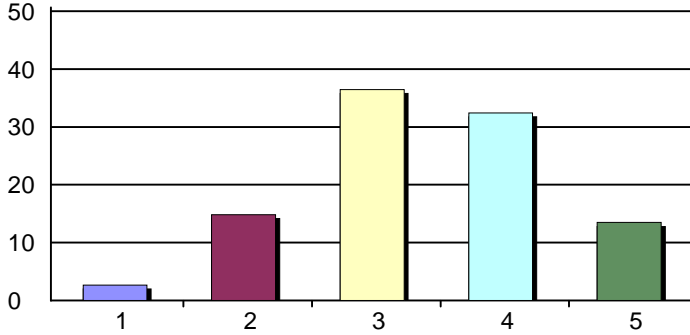


# Student Learning Outcomes Process Report May 2011

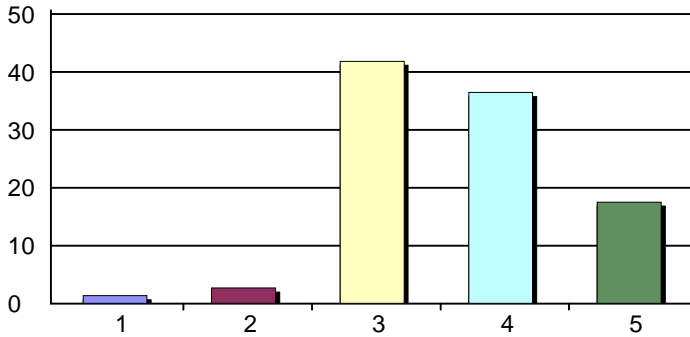
Creation Date: 5/16/2011  
 Time Interval: 4/29/2011 to 5/16/2011  
 Total Respondents: 74

1. I am aware of the five collegewide Student Learning Outcomes (SLOs).



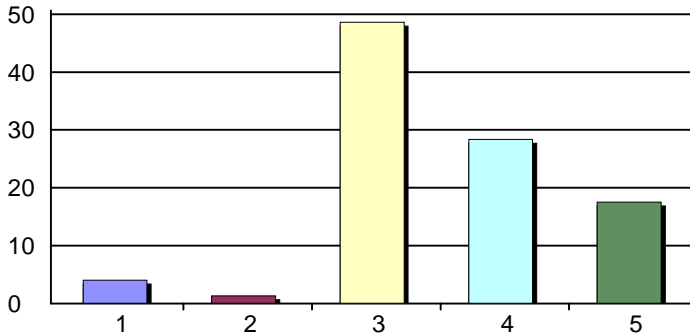
1. Strongly Disagree	2	3%
2. Disagree	11	15%
3. Agree	27	36%
4. Strongly Agree	24	32%
5. Do not know/Not applicable	10	14%
<b>Total Responses:</b>	<b>74</b>	
<b>Mean:</b>	<b>3.14</b>	<b>Standard Deviation: 0.81</b>

2. The Academic Senate and the Curriculum Committee are supporting the development of course-level and degree-level SLOs.



1. Strongly Disagree	1	1%
2. Disagree	2	3%
3. Agree	31	42%
4. Strongly Agree	27	36%
5. Do Not Know/Not Apply	13	18%
<b>Total Responses:</b>	<b>74</b>	
<b>Mean:</b>	<b>3.38</b>	<b>Standard Deviation: 0.64</b>

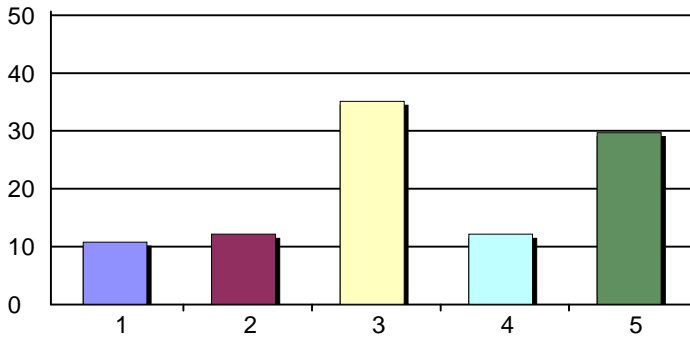
3. The Academic Senate and the Administration have taken responsibility for SLO implementation.



1. Strongly Disagree	3	4%
2. Disagree	1	1%
3. Agree	36	49%
4. Strongly Agree	21	28%
5. Do Not Know/Not Apply	13	18%
<b>Total Responses:</b>	<b>74</b>	
<b>Mean:</b>	<b>3.23</b>	<b>Standard Deviation: 0.72</b>

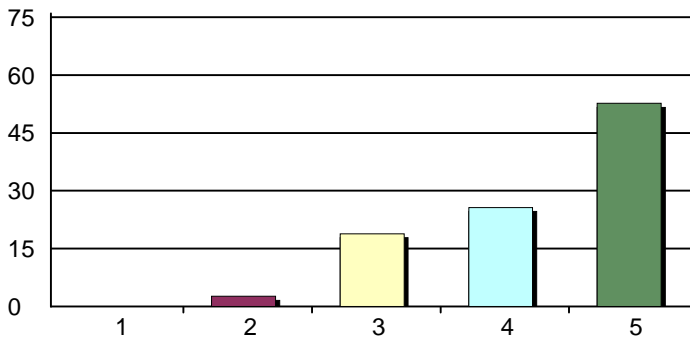
# Student Learning Outcomes Process Report May 2011

4. Appropriate resources are allocated to support the development and assessment of SLOs.



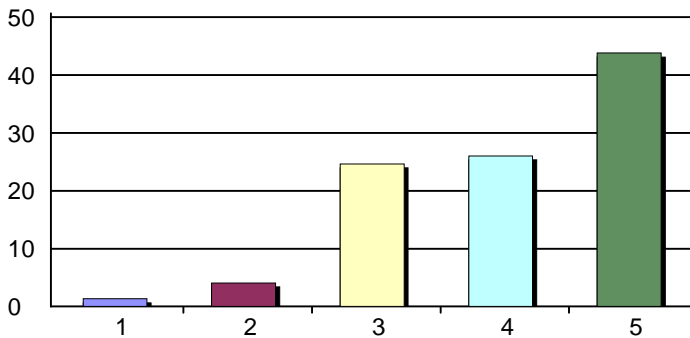
1. Strongly Disagree	8	11%
2. Disagree	9	12%
3. Agree	26	35%
4. Strongly Agree	9	12%
5. Do not know/Not applicable	22	30%
Total Responses:	74	
Mean: 2.69	Standard Deviation: 0.94	

5. I put course-level SLOs in my syllabus.



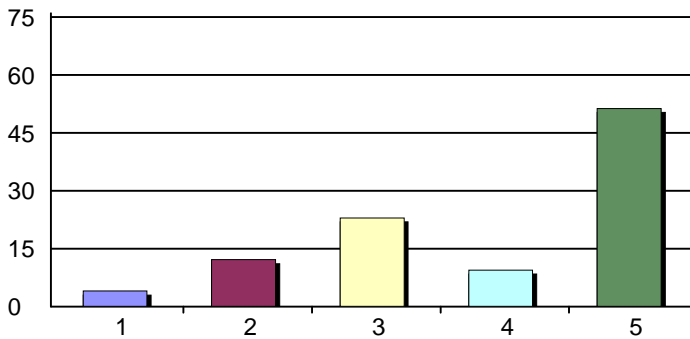
1. Strongly Disagree	0	0%
2. Disagree	2	3%
3. Agree	14	19%
4. Strongly Agree	19	26%
5. Do Not Know/Not Apply	39	53%
Total Responses:	74	
Mean: 3.49	Standard Deviation: 0.61	

6. My discipline has written course-level SLOs.



1. Strongly Disagree	1	1%
2. Disagree	3	4%
3. Agree	18	25%
4. Strongly Agree	19	26%
5. Do not know/Not applicable	32	44%
Total Responses:	73	
Mean: 3.34	Standard Deviation: 0.73	

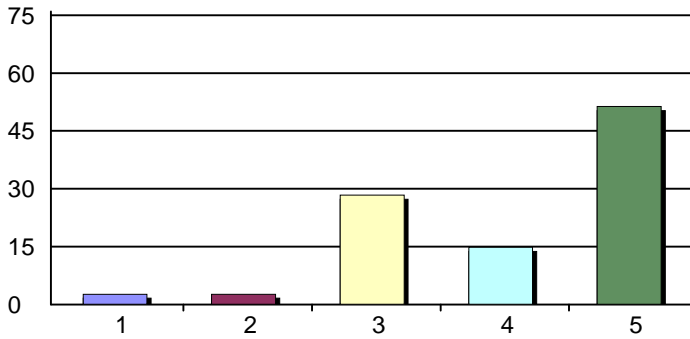
7. My discipline has assessed course-level SLOs.



1. Strongly Disagree	3	4%
2. Disagree	9	12%
3. Agree	17	23%
4. Strongly Agree	7	9%
5. Do Not Know/Not Apply	38	51%
Total Responses:	74	
Mean: 2.78	Standard Deviation: 0.87	

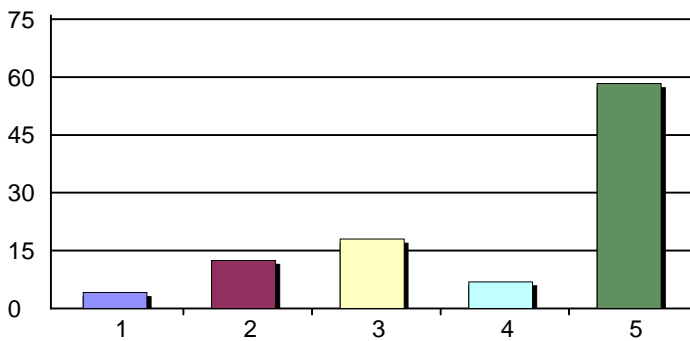
# Student Learning Outcomes Process Report May 2011

8. My discipline or program has written degree/program-level SLOs.



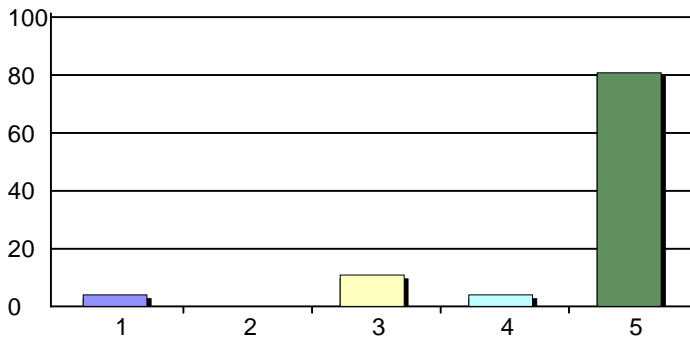
1. Strongly Disagree	2	3%
2. Disagree	2	3%
3. Agree	21	28%
4. Strongly Agree	11	15%
5. Do Not Know/Not Apply	38	51%
Total Responses:	74	
Mean: 3.14	Standard Deviation: 0.76	

9. My discipline or program has assessed degree/program-level SLOs.



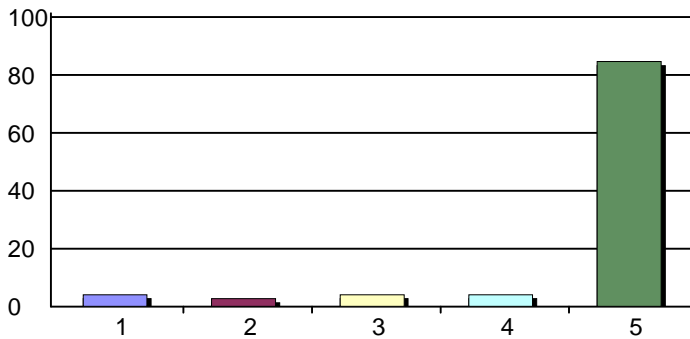
1. Strongly Disagree	3	4%
2. Disagree	9	12%
3. Agree	13	18%
4. Strongly Agree	5	7%
5. Do Not Know/Not Apply	42	58%
Total Responses:	72	
Mean: 2.67	Standard Deviation: 0.88	

10. My student service area has written SLOs.



1. Strongly Disagree	3	4%
2. Disagree	0	0%
3. Agree	8	11%
4. Strongly Agree	3	4%
5. Do Not Know/Not Apply	59	81%
Total Responses:	73	
Mean: 2.79	Standard Deviation: 1.05	

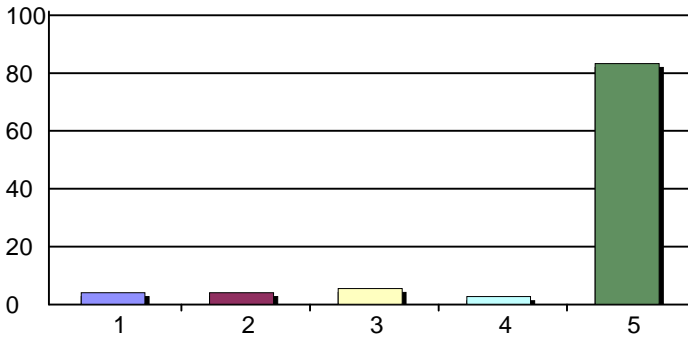
11. My student service area has assessed our SLOs.



1. Strongly Disagree	3	4%
2. Disagree	2	3%
3. Agree	3	4%
4. Strongly Agree	3	4%
5. Do Not Know/Not Apply	61	85%
Total Responses:	72	
Mean: 2.55	Standard Deviation: 1.21	

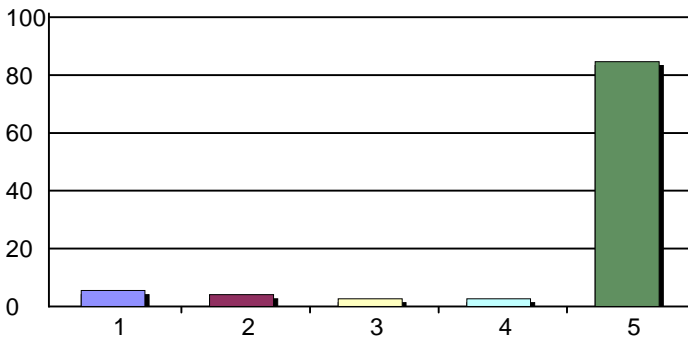
# Student Learning Outcomes Process Report May 2011

12. My student service area has written division-level SLOs.



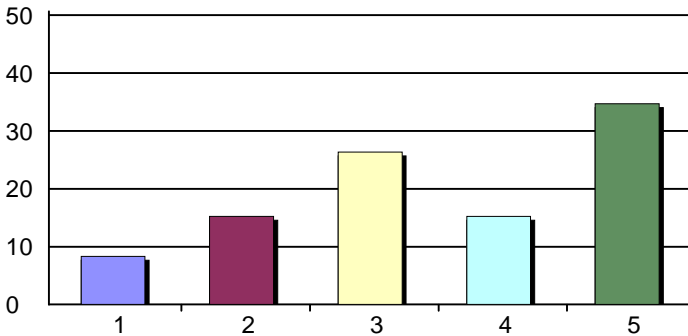
1. Strongly Disagree	3	4%
2. Disagree	3	4%
3. Agree	4	6%
4. Strongly Agree	2	3%
5. Do Not Know/Not Apply	60	83%
<b>Total Responses:</b>	<b>72</b>	
<b>Mean:</b>	<b>2.42</b>	<b>Standard Deviation: 1.08</b>

13. My student service area has assessed division-level SLOs.



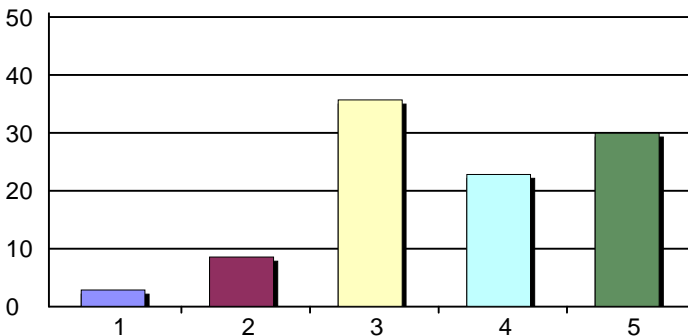
1. Strongly Disagree	4	6%
2. Disagree	3	4%
3. Agree	2	3%
4. Strongly Agree	2	3%
5. Do Not Know/Not Apply	61	85%
<b>Total Responses:</b>	<b>72</b>	
<b>Mean:</b>	<b>2.18</b>	<b>Standard Deviation: 1.17</b>

14. Faculty and staff in my area discuss SLO assessment results for program improvement.



1. Strongly Disagree	6	8%
2. Disagree	11	15%
3. Agree	19	26%
4. Strongly Agree	11	15%
5. Do Not Know/Not Apply	25	35%
<b>Total Responses:</b>	<b>72</b>	
<b>Mean:</b>	<b>2.74</b>	<b>Standard Deviation: 0.97</b>

17. I have been involved in the Student Learning Outcomes process.

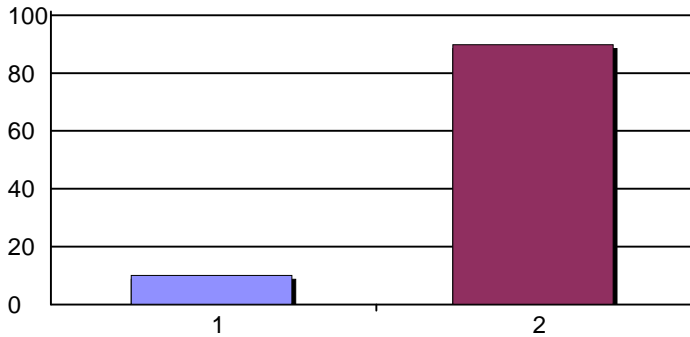


1. Strongly Disagree	2	3%
2. Disagree	6	9%
3. Agree	25	36%
4. Strongly Agree	16	23%
5. Do not know/Not applicable	21	30%
<b>Total Responses:</b>	<b>70</b>	
<b>Mean:</b>	<b>3.12</b>	<b>Standard Deviation: 0.78</b>

# Student Learning Outcomes Process Report May 2011

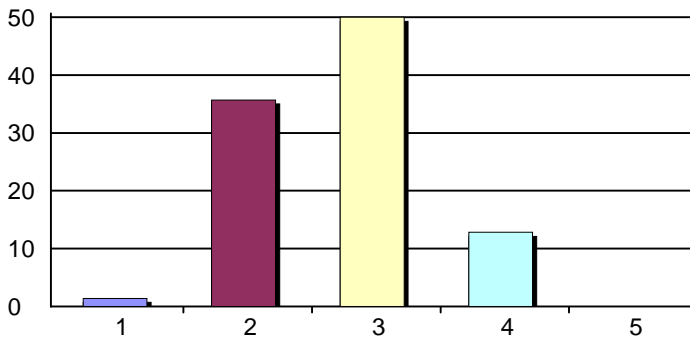
18. I am a member of the Student Learning Outcomes Assessment Council (SLOAC).

1. Yes	7	10%
2. No	62	90%
Total Responses:	69	
Mean: 1.90	Standard Deviation: 0.30	



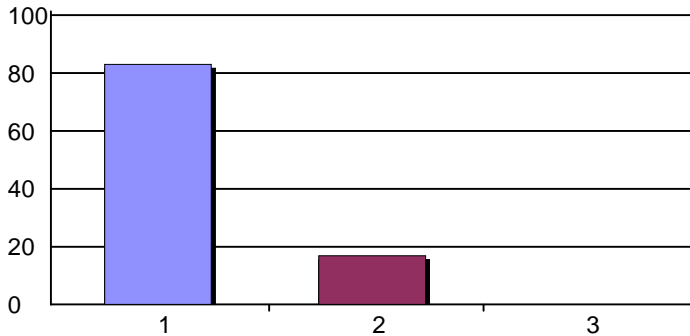
19. I am a(n) (indicate primary role):

1. Student	1	1%
2. Staff member	25	36%
3. Faculty member	35	50%
4. Administrator	9	13%
5. Other _____	0	0%
Total Responses:	70	



20. I am a(n):

1. Full-time employee	59	83%
2. Part-time employee	12	17%
3. Other _____	0	0%
Total Responses:	71	



21. My main area of responsibility is in:

1. Academic or Instructional area	41	59%
2. Student Services area	14	20%
3. Administration	13	19%
4. Other _____	2	3%
Total Responses:	70	

