

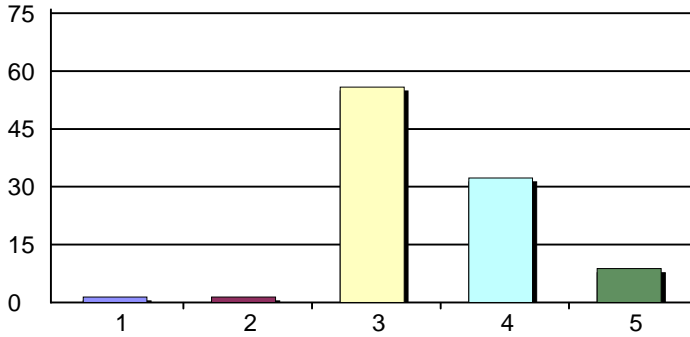
Program Review Process Report May 2011

Creation Date: 5/16/2011

Time Interval: 4/29/2011 to 5/16/2011

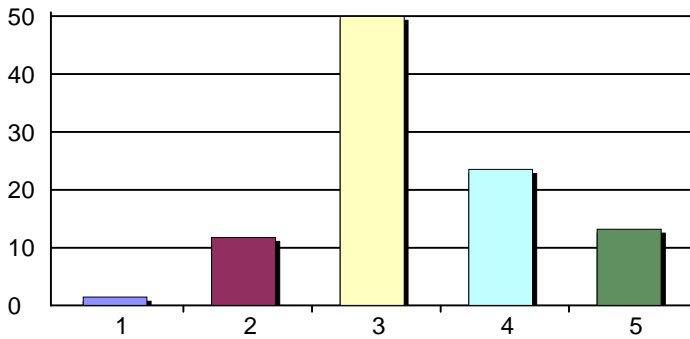
Total Respondents: 68

1. The College has a program review process in place for instructional, student services and administrative review.



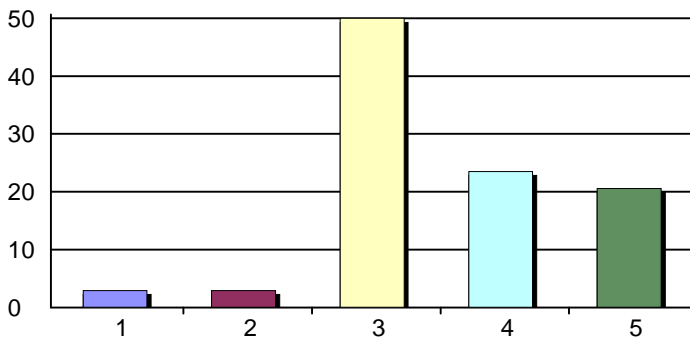
1. Strongly Disagree	1	1%
2. Disagree	1	1%
3. Agree	38	56%
4. Strongly Agree	22	32%
5. Do not know/Not applicable	6	9%
Total Responses:	68	
Mean: 3.31	Standard Deviation: 0.59	

2. Program Review is done regularly.



1. Strongly Disagree	1	1%
2. Disagree	8	12%
3. Agree	34	50%
4. Strongly Agree	16	24%
5. Do Not Know/Not Apply	9	13%
Total Responses:	68	
Mean: 3.10	Standard Deviation: 0.69	

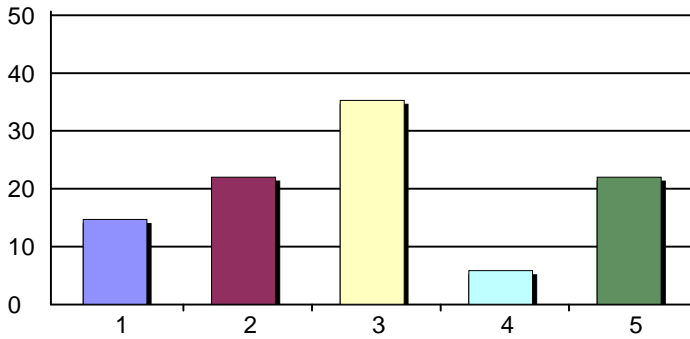
3. The leadership groups (Administration, Academic Senate, etc.) of the College develop a framework for program review.



1. Strongly Disagree	2	3%
2. Disagree	2	3%
3. Agree	34	50%
4. Strongly Agree	16	24%
5. Do Not Know/Not Apply	14	21%
Total Responses:	68	
Mean: 3.19	Standard Deviation: 0.68	

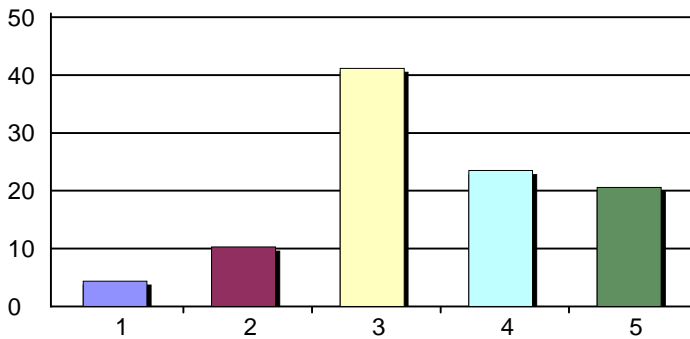
Program Review Process Report May 2011

4. Appropriate resources are allocated to conducting program review of meaningful quality.



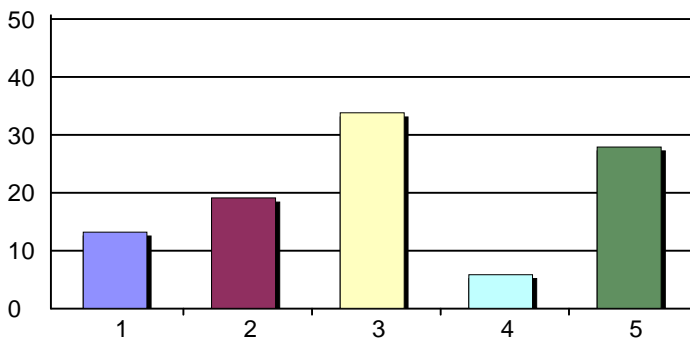
1. Strongly Disagree	10	15%
2. Disagree	15	22%
3. Agree	24	35%
4. Strongly Agree	4	6%
5. Do not know/Not applicable	15	22%
Total Responses:	68	
Mean: 2.42	Standard Deviation: 0.89	

5. Program Review utilizes quantitative and qualitative data.



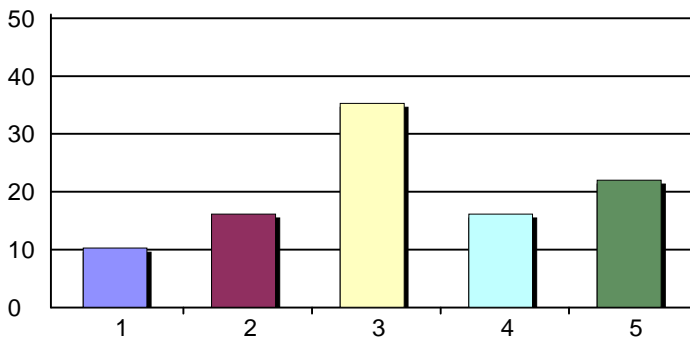
1. Strongly Disagree	3	4%
2. Disagree	7	10%
3. Agree	28	41%
4. Strongly Agree	16	24%
5. Do Not Know/Not Apply	14	21%
Total Responses:	68	
Mean: 3.06	Standard Deviation: 0.81	

6. Program Review participants in my area discuss the results of our program review as part of a dialog on our program's effectiveness.



1. Strongly Disagree	9	13%
2. Disagree	13	19%
3. Agree	23	34%
4. Strongly Agree	4	6%
5. Do Not Know/Not Apply	19	28%
Total Responses:	68	
Mean: 2.45	Standard Deviation: 0.89	

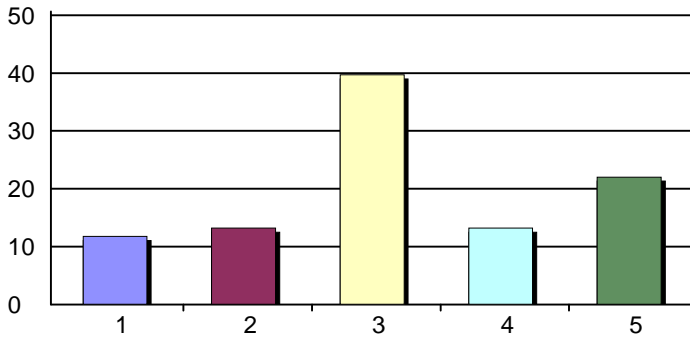
7. Program Review is linked to resource allocation.



1. Strongly Disagree	7	10%
2. Disagree	11	16%
3. Agree	24	35%
4. Strongly Agree	11	16%
5. Do not know/Not applicable	15	22%
Total Responses:	68	
Mean: 2.74	Standard Deviation: 0.94	

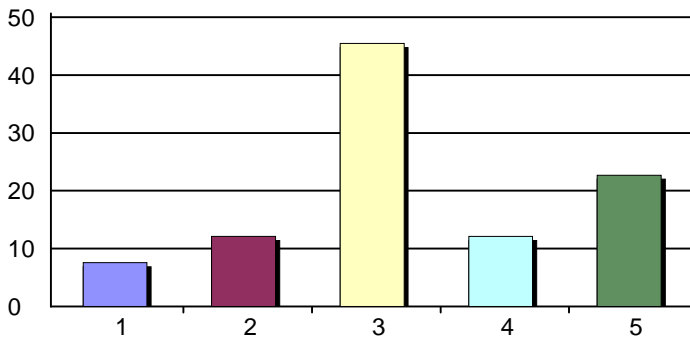
Program Review Process Report May 2011

8. Program Review is linked to developing strategies for program improvement.



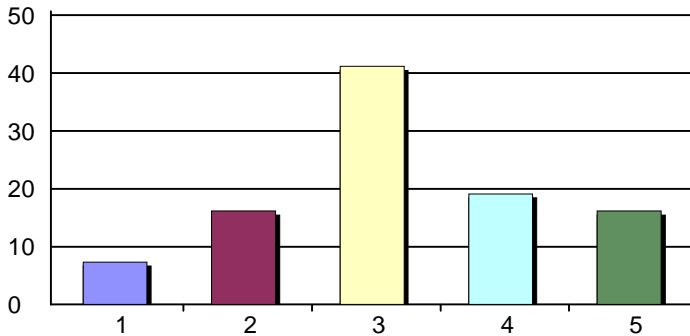
1. Strongly Disagree	8	12%
2. Disagree	9	13%
3. Agree	27	40%
4. Strongly Agree	9	13%
5. Do Not Know/Not Apply	15	22%
Total Responses:	68	
Mean: 2.70	Standard Deviation: 0.93	

9. Program Review informs decision-making.



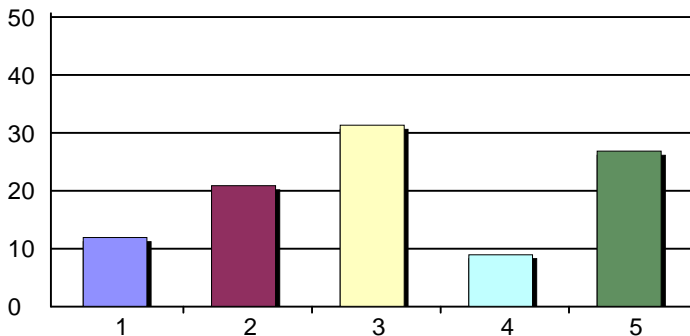
1. Strongly Disagree	5	8%
2. Disagree	8	12%
3. Agree	30	45%
4. Strongly Agree	8	12%
5. Do Not Know/Not Apply	15	23%
Total Responses:	66	
Mean: 2.80	Standard Deviation: 0.83	

10. The College supports the use of program review in improving student achievement and student learning outcomes.



1. Strongly Disagree	5	7%
2. Disagree	11	16%
3. Agree	28	41%
4. Strongly Agree	13	19%
5. Do Not Know/Not Apply	11	16%
Total Responses:	68	
Mean: 2.86	Standard Deviation: 0.88	

11. Overall, the College effectively uses the results of program review.

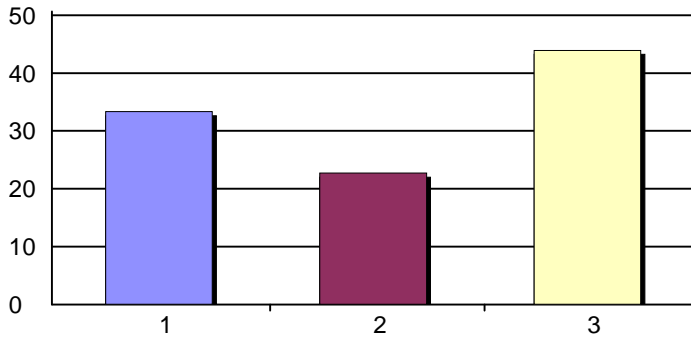


1. Strongly Disagree	8	12%
2. Disagree	14	21%
3. Agree	21	31%
4. Strongly Agree	6	9%
5. Do Not Know/Not Apply	18	27%
Total Responses:	67	
Mean: 2.51	Standard Deviation: 0.92	

Program Review Process Report May 2011

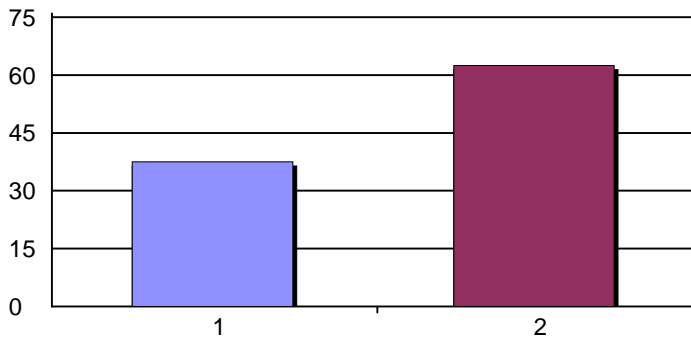
15. I am/was a member of a Participatory Governance Committee:

1. current committee member	22	33%
2. past committee member	15	23%
3. never have been a committee member	29	44%
Total Responses:	66	



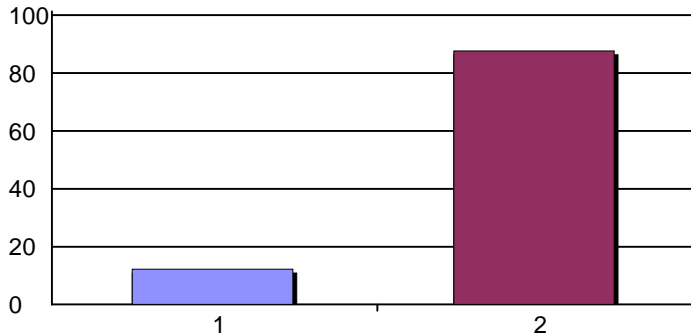
16. I attend committee meetings for the 2010-2011 school year regularly.

1. Yes	24	38%
2. No	40	62%
Total Responses:	64	
Mean: 1.62	Standard Deviation: 0.49	



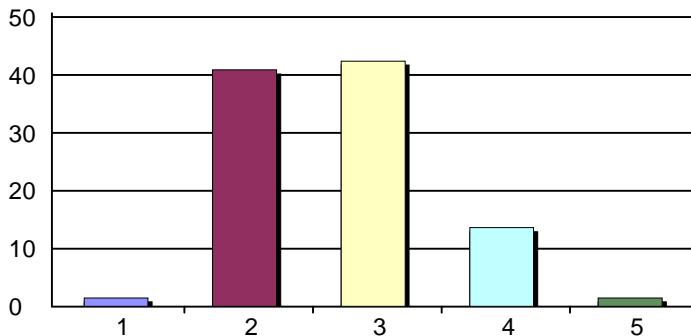
17. I am a member of Program Review Committee.

1. Yes	8	12%
2. No	57	88%
Total Responses:	65	
Mean: 1.88	Standard Deviation: 0.33	



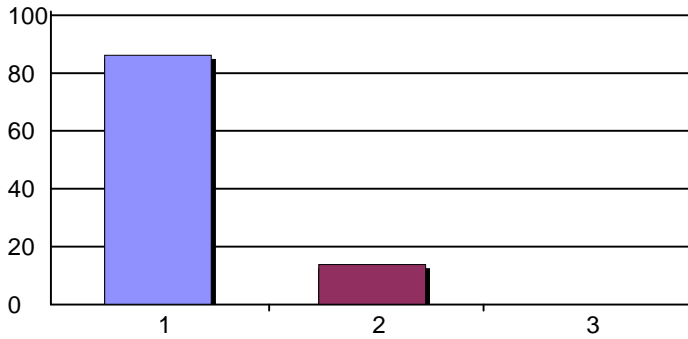
18. I am a(n) (indicate primary role):

1. Student	1	2%
2. Staff member	27	41%
3. Faculty member	28	42%
4. Administrator	9	14%
5. Other _____	1	2%
Total Responses:	66	



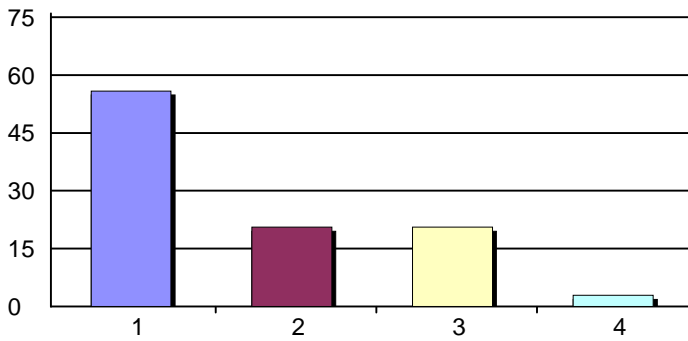
Program Review Process Report May 2011

19. I am a(n):



1. Full-time employee	56	86%
2. Part-time employee	9	14%
3. Other _____	0	0%
Total Responses:	65	

20. My main area of responsibility is in:



1. Academic or Instructional area	38	56%
2. Student Services area	14	21%
3. Administration	14	21%
4. Other _____	2	3%
Total Responses:	68	