

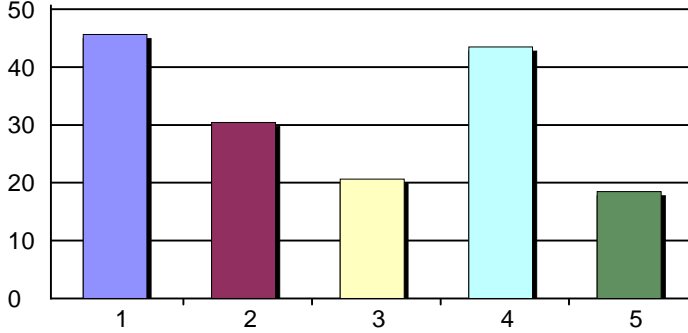
# Planning Process Survey Report May 2011

Creation Date: 5/16/2011

Time Interval: 4/29/2011 to 5/16/2011

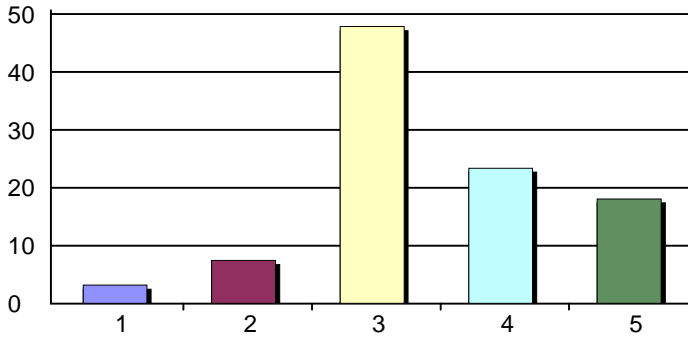
Total Respondents: 94

1. I can find College of Marin's mission statement: (Mark all that apply.)



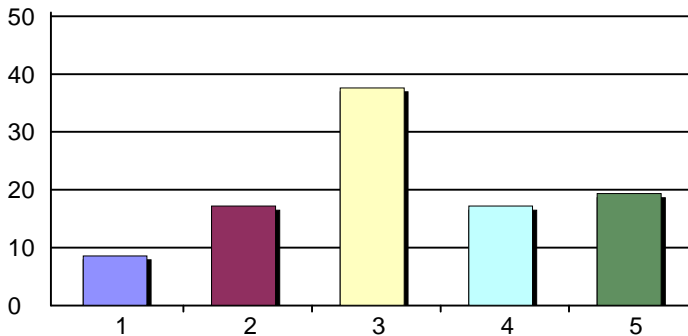
1. on the website	42	46%
2. in the catalog	28	30%
3. in the schedule	19	21%
4. all of the above	40	43%
5. never looked	17	18%
Total Responses:	92	

2. The College's planning efforts are linked to the college mission and goals through the Educational Master Plan and the Strategic Plan.



1. Strongly Disagree	3	3%
2. Disagree	7	7%
3. Agree	45	48%
4. Strongly Agree	22	23%
5. Do not know/Not applicable	17	18%
Total Responses:	94	
Mean: 3.12	Standard Deviation: 0.73	

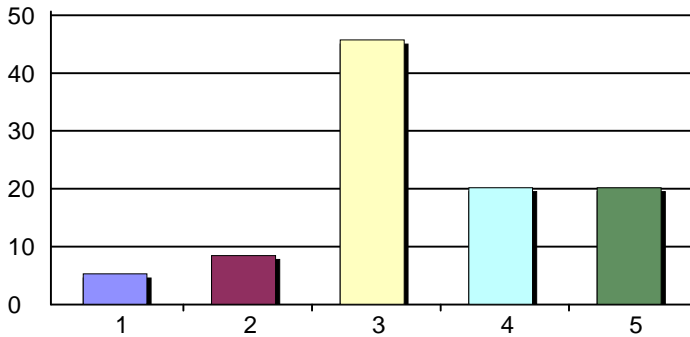
3. The mission and these institutional plans have an effect on budget allocation.



1. Strongly Disagree	8	9%
2. Disagree	16	17%
3. Agree	35	38%
4. Strongly Agree	16	17%
5. Do Not Know/Not Apply	18	19%
Total Responses:	93	
Mean: 2.79	Standard Deviation: 0.90	

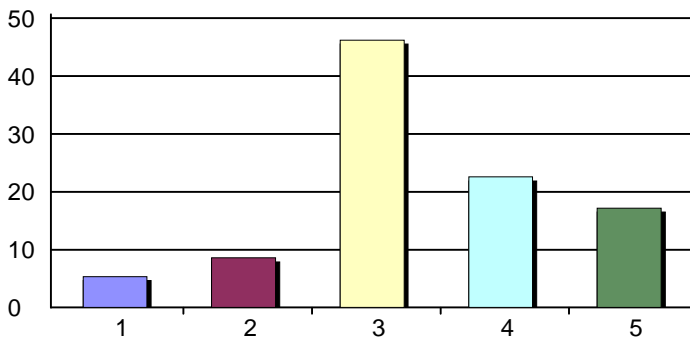
# Planning Process Survey Report May 2011

4. The College has a strategic plan with specific action steps and responsible people assigned to each action step.



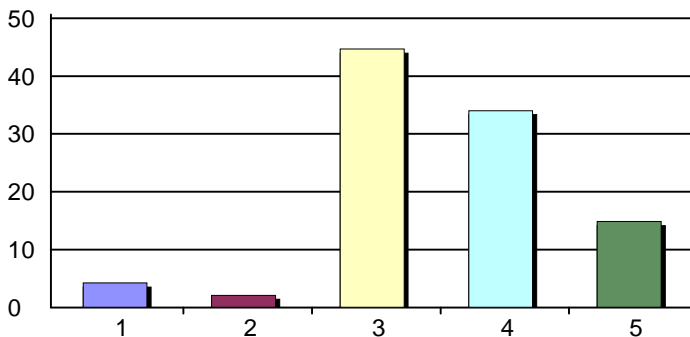
1. Strongly Disagree	5	5%
2. Disagree	8	9%
3. Agree	43	46%
4. Strongly Agree	19	20%
5. Do Not Know/Not Apply	19	20%
Total Responses:	94	
Mean: 3.01	Standard Deviation: 0.80	

5. The College has created an integrated planning process which is being implemented through the participatory governance system.



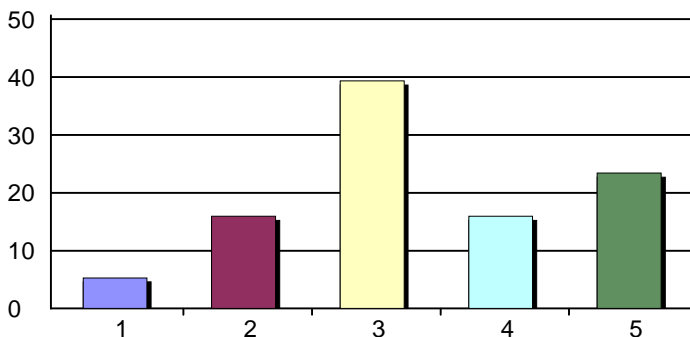
1. Strongly Disagree	5	5%
2. Disagree	8	9%
3. Agree	43	46%
4. Strongly Agree	21	23%
5. Do not know/Not applicable	16	17%
Total Responses:	93	
Mean: 3.04	Standard Deviation: 0.80	

6. The planning process involves participatory governance committees whose members include students, classified staff, faculty, and administrators.



1. Strongly Disagree	4	4%
2. Disagree	2	2%
3. Agree	42	45%
4. Strongly Agree	32	34%
5. Do Not Know/Not Apply	14	15%
Total Responses:	94	
Mean: 3.28	Standard Deviation: 0.75	

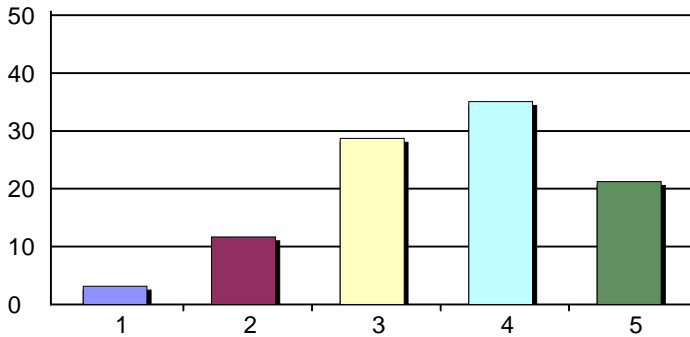
7. The College's participatory governance and decision-making processes include both an assessment/review of how effective the processes were in relation to the mission and planning for improvement.



1. Strongly Disagree	5	5%
2. Disagree	15	16%
3. Agree	37	39%
4. Strongly Agree	15	16%
5. Do Not Know/Not Apply	22	23%
Total Responses:	94	
Mean: 2.86	Standard Deviation: 0.83	

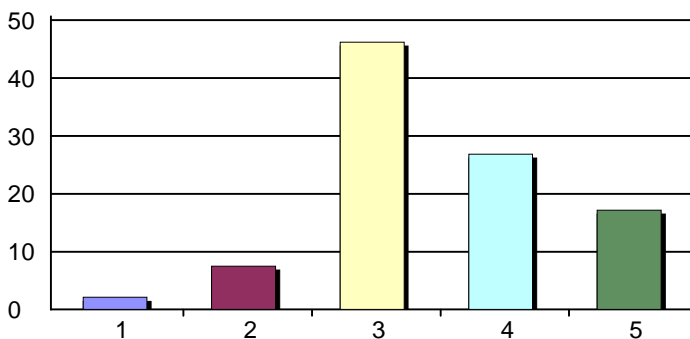
# Planning Process Survey Report May 2011

8. I know that PRIE means the office of Planning, Research and Institutional Effectiveness and the college's research function is part of it.



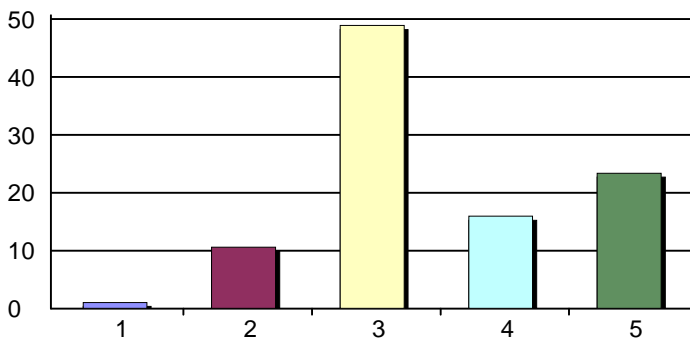
1. Strongly Disagree	3	3%
2. Disagree	11	12%
3. Agree	27	29%
4. Strongly Agree	33	35%
5. Do not know/Not applicable	20	21%
<b>Total Responses:</b>	<b>94</b>	
<b>Mean:</b> 3.22	<b>Standard Deviation:</b> 0.85	

9. The College has identified quantitative and qualitative data and is using it for planning.



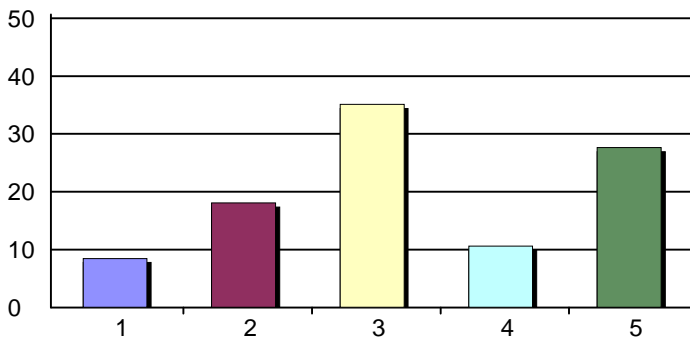
1. Strongly Disagree	2	2%
2. Disagree	7	8%
3. Agree	43	46%
4. Strongly Agree	25	27%
5. Do Not Know/Not Apply	16	17%
<b>Total Responses:</b>	<b>93</b>	
<b>Mean:</b> 3.18	<b>Standard Deviation:</b> 0.70	

10. The College provides longitudinal data (over time) to analyze the achievement of its educational goals.



1. Strongly Disagree	1	1%
2. Disagree	10	11%
3. Agree	46	49%
4. Strongly Agree	15	16%
5. Do Not Know/Not Apply	22	23%
<b>Total Responses:</b>	<b>94</b>	
<b>Mean:</b> 3.04	<b>Standard Deviation:</b> 0.64	

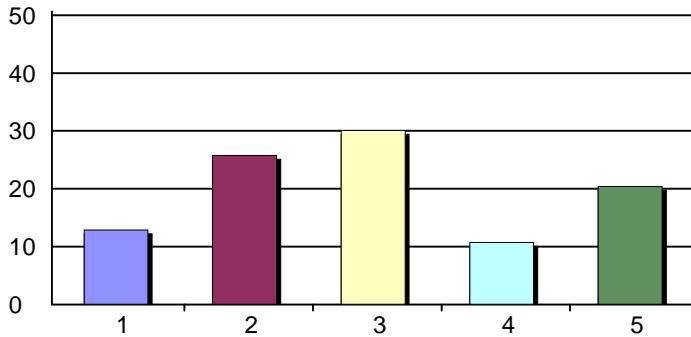
11. The College is using the results of Student Learning Outcome Assessment for planning and resource allocation.



1. Strongly Disagree	8	9%
2. Disagree	17	18%
3. Agree	33	35%
4. Strongly Agree	10	11%
5. Do Not Know/Not Apply	26	28%
<b>Total Responses:</b>	<b>94</b>	
<b>Mean:</b> 2.66	<b>Standard Deviation:</b> 0.87	

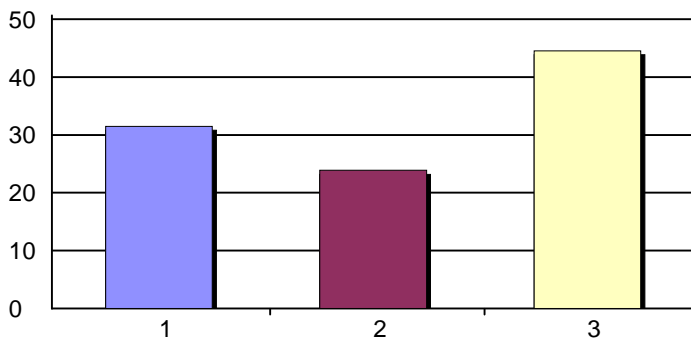
# Planning Process Survey Report May 2011

12. The College effectively uses the results of program review in most areas of planning.



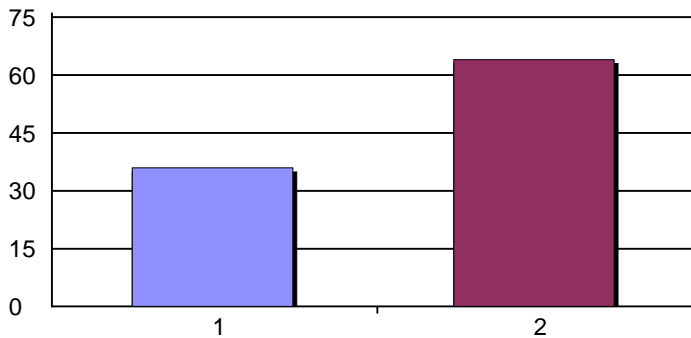
1. Strongly Disagree	12	13%
2. Disagree	24	26%
3. Agree	28	30%
4. Strongly Agree	10	11%
5. Do Not Know/Not Apply	19	20%
Total Responses:	93	
Mean: 2.49	Standard Deviation: 0.93	

15. I am/was a member of a Participatory Governance Committee:



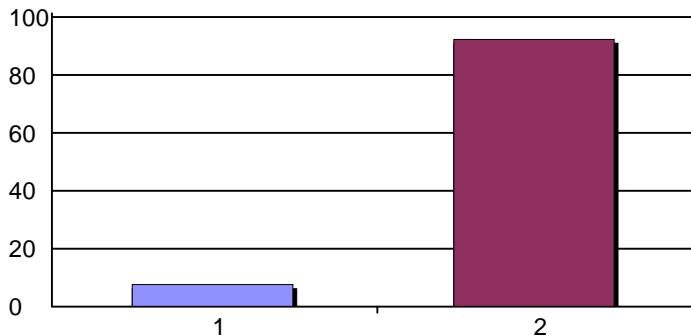
1. current committee member	29	32%
2. past committee member	22	24%
3. never have been a committee member	41	45%
Total Responses:	92	

16. I attend committee meetings for the school year of 2010-2011 regularly.



1. Yes	32	36%
2. No	57	64%
Total Responses:	89	
Mean: 1.64	Standard Deviation: 0.48	

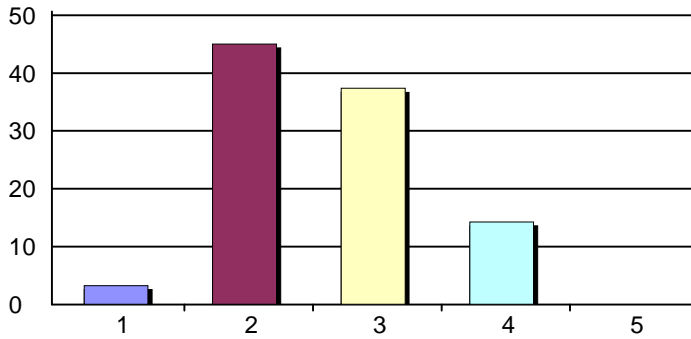
17. I am a member of the Planning and Resource Allocation Committee (PRAC).



1. Yes	7	8%
2. No	85	92%
Total Responses:	92	
Mean: 1.92	Standard Deviation: 0.27	

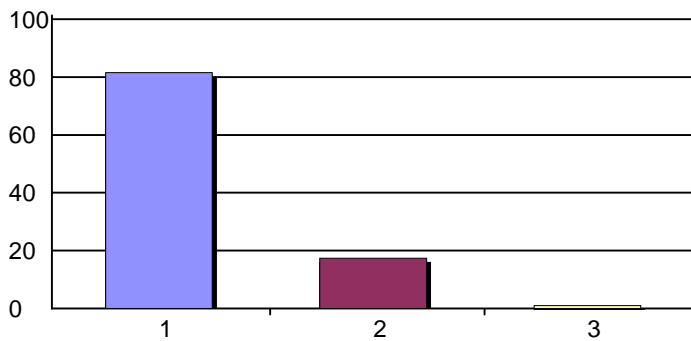
# Planning Process Survey Report May 2011

18. I am (indicate primary role) a(n):



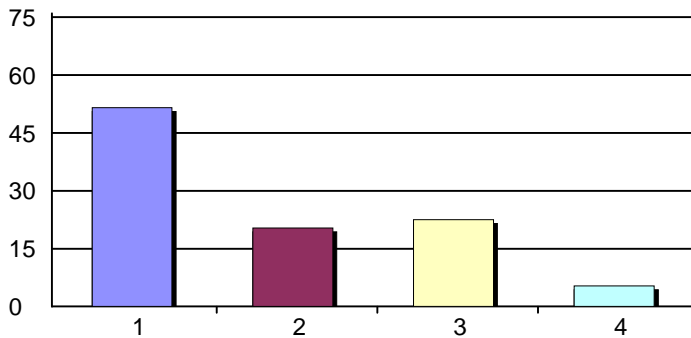
1. Student	3	3%
2. Staff member	41	45%
3. Faculty member	34	37%
4. Administrator	13	14%
5. Other _____	0	0%
<b>Total Responses:</b>	<b>91</b>	

19. I am a(n):



1. Full-time employee	75	82%
2. Part-time employee	16	17%
3. Other _____	1	1%
<b>Total Responses:</b>	<b>92</b>	

20. My main area of responsibility is in:



1. Academic or Instructional area	48	52%
2. Student Services area	19	20%
3. Administration	21	23%
4. Other _____	5	5%
<b>Total Responses:</b>	<b>93</b>	