

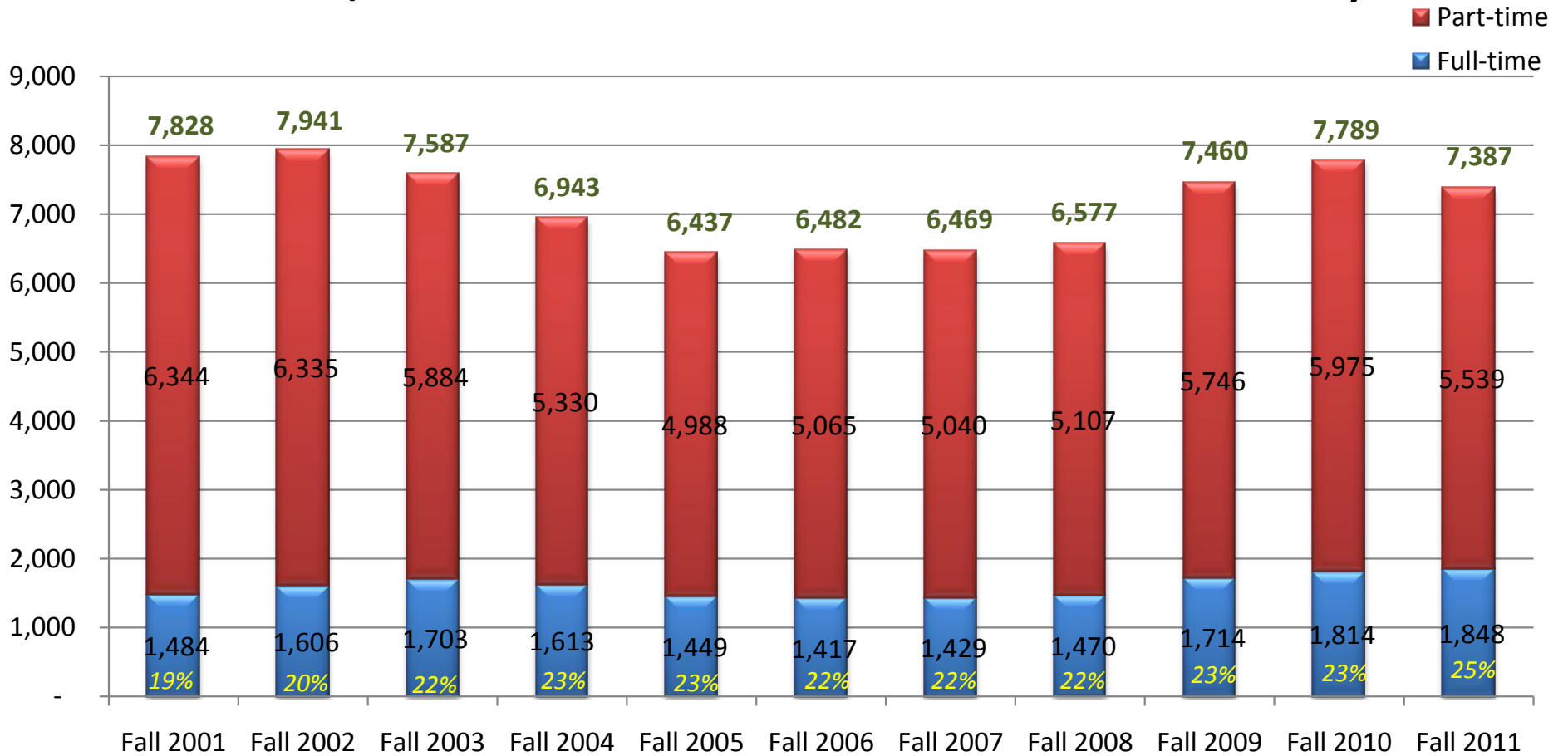
Memo

To: Cabinet
From: Chialin Hsieh
CC: Research Advisory Group, College Council, PGS Committee Chairs
Date: 9/8/2011
Re: Enrollment

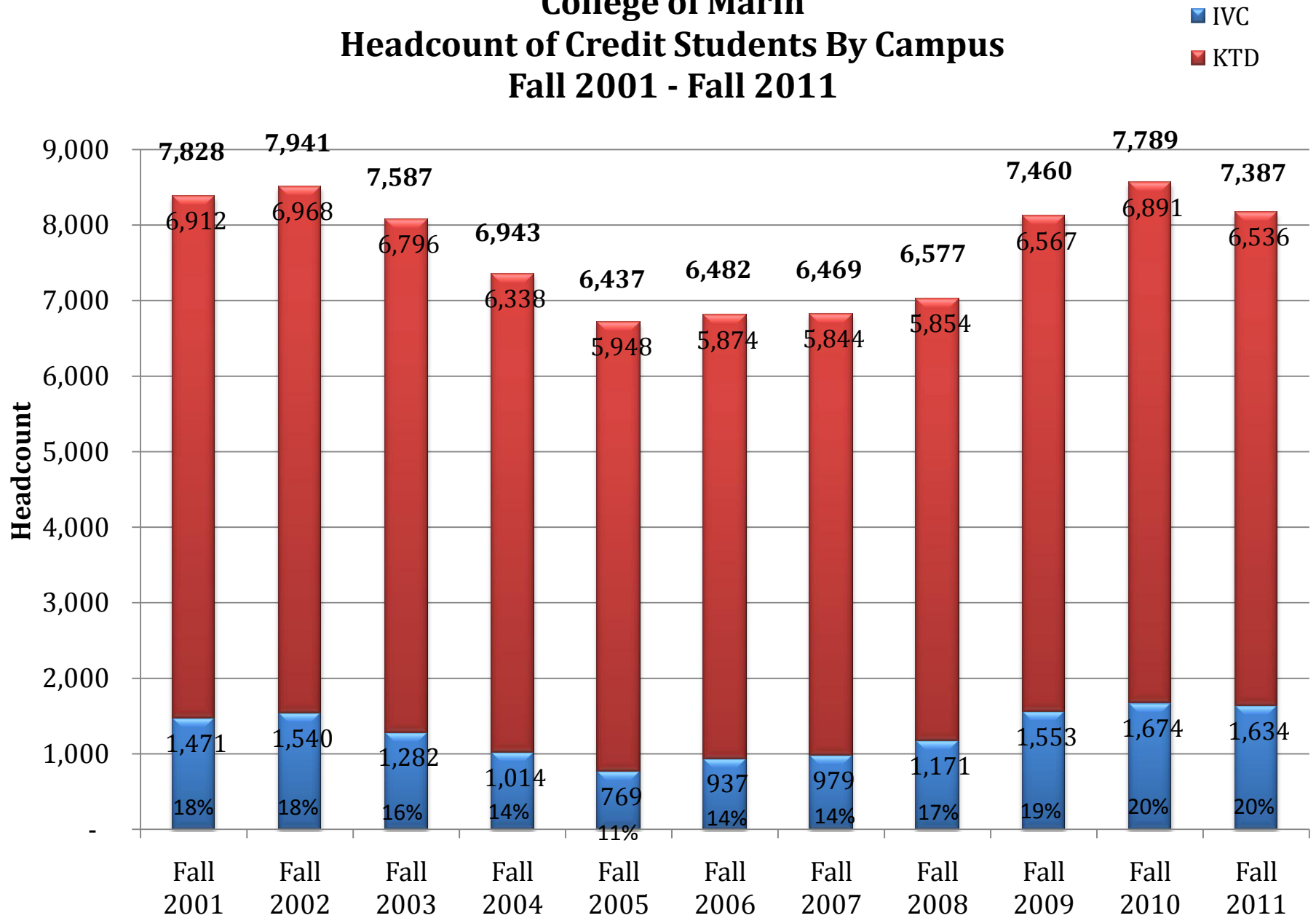
Fall Enrollment Figures Show a Greater Percentage of Credit Students Are Attending COM Full-time

As of census day, Monday, Sep. 5, 2011, there are 7,387 COM credit students taking 54,225.0 credits for fall 2011. This is lower by comparison with fall 2010 at first census when there were 7,789 students taking 55,305.0 credits. Despite, the decline in headcount, the average student load has increased this fall semester from 7.1 units to 7.3 units, indicating that students are taking more units than in previous fall semesters. Also, the percentage of students attending full-time has also increased to 25 percent this fall, which is the highest percentage of full-time students to attend COM in the past 10 years. In terms of campus enrollment, the percentage of students enrolled at IVC is 20 percent this fall.

College of Marin Full-time/Part-time Status of Credit Students As of First Census Day

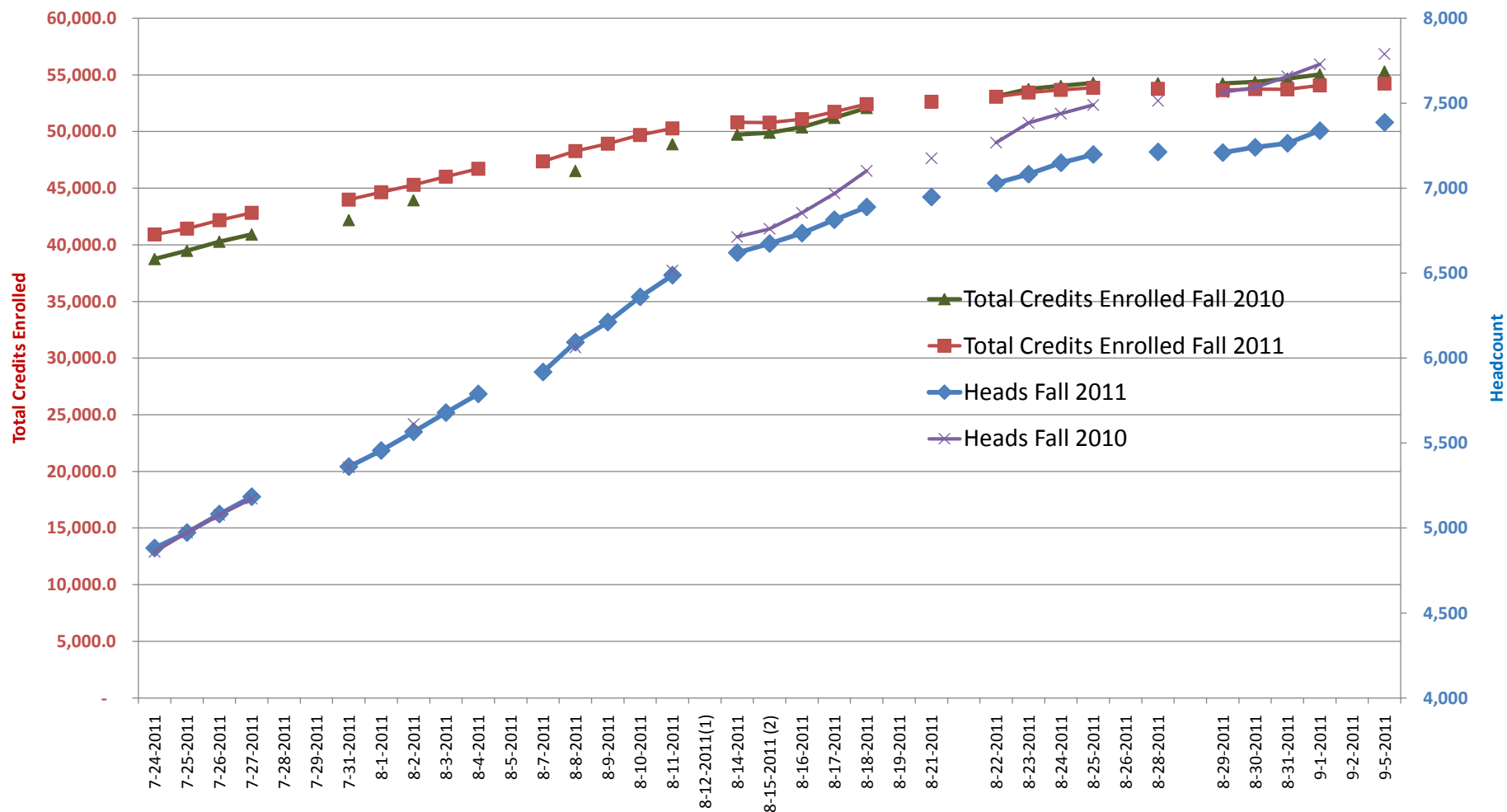


College of Marin Headcount of Credit Students By Campus Fall 2001 - Fall 2011



IVC headcount plus KTD headcount does not equal overall headcount because some students attend both campuses.

Fall 2010 and Fall 2011 Registration (Census Day) Credits Enrolled & Headcount



Fall 2010 and Fall 2011 Registration (Census Day) Credit Enrolled & Average Student Load

