



College of Marin Convocation

Dr. David Wain Coon
Superintendent/President

January 21, 2011

College of Marin 2011

Who we are today!

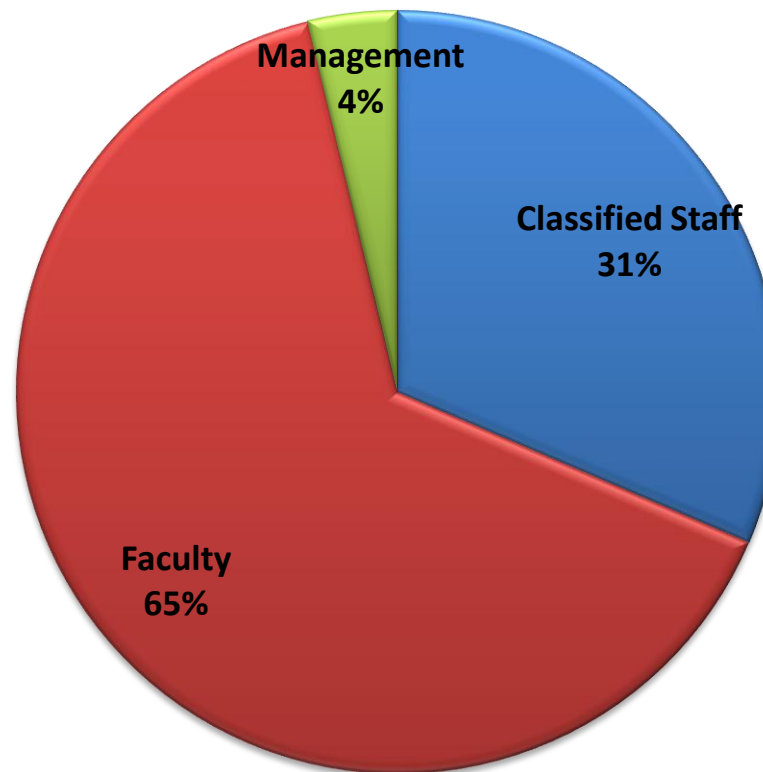
Employee Snapshot

Employee Head Count for Spring 2011

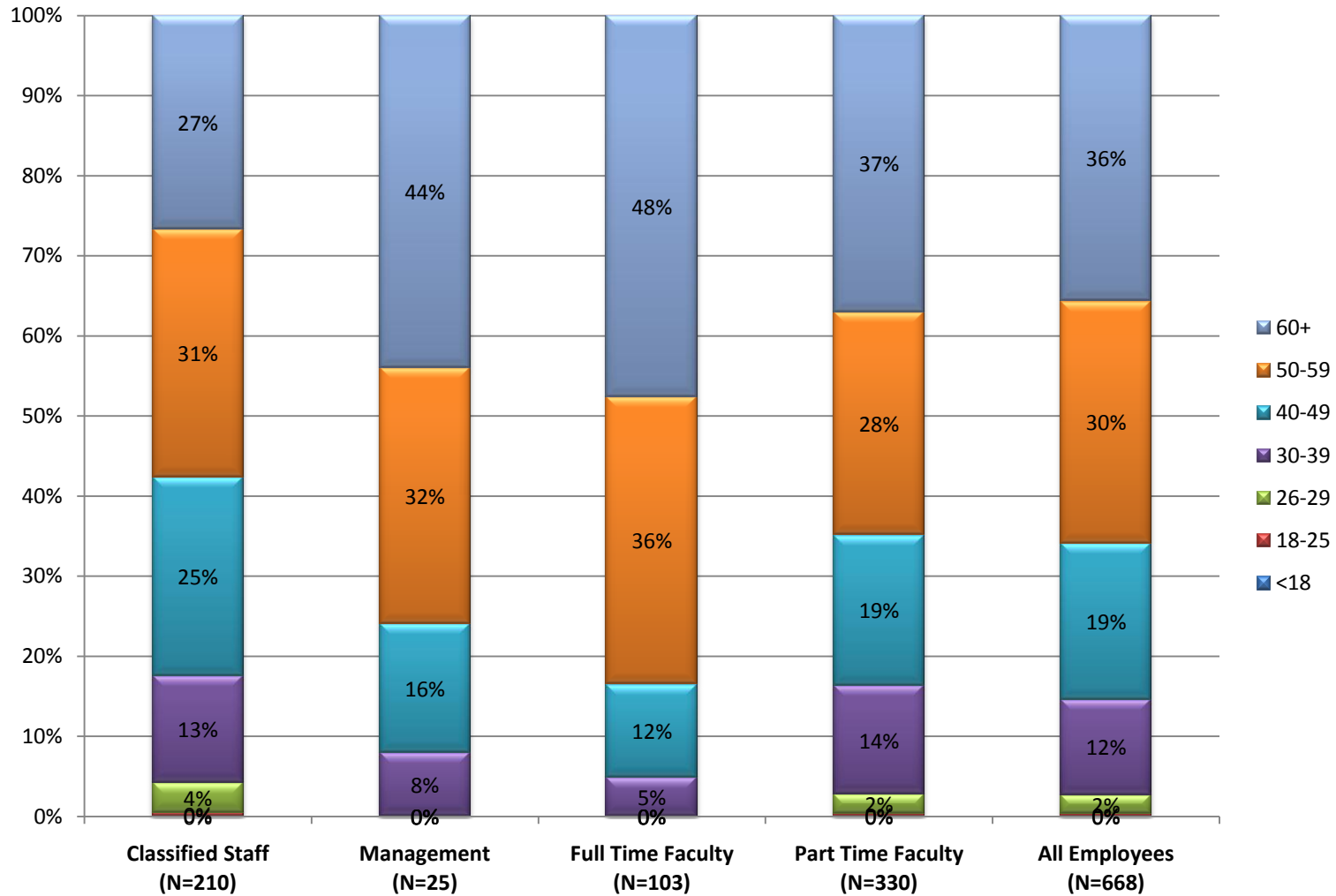
668

As of 1/19/2011

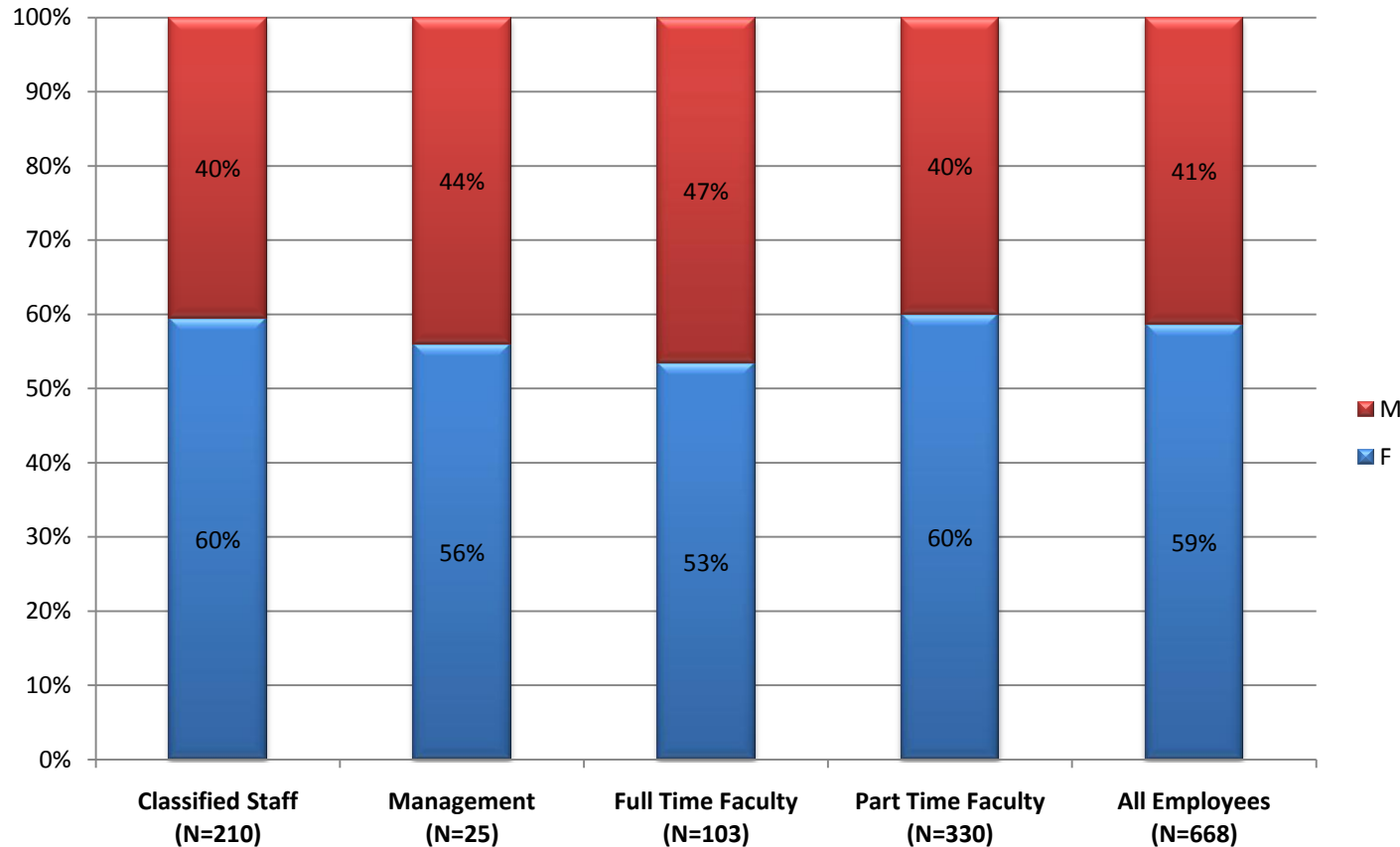
College of Marin



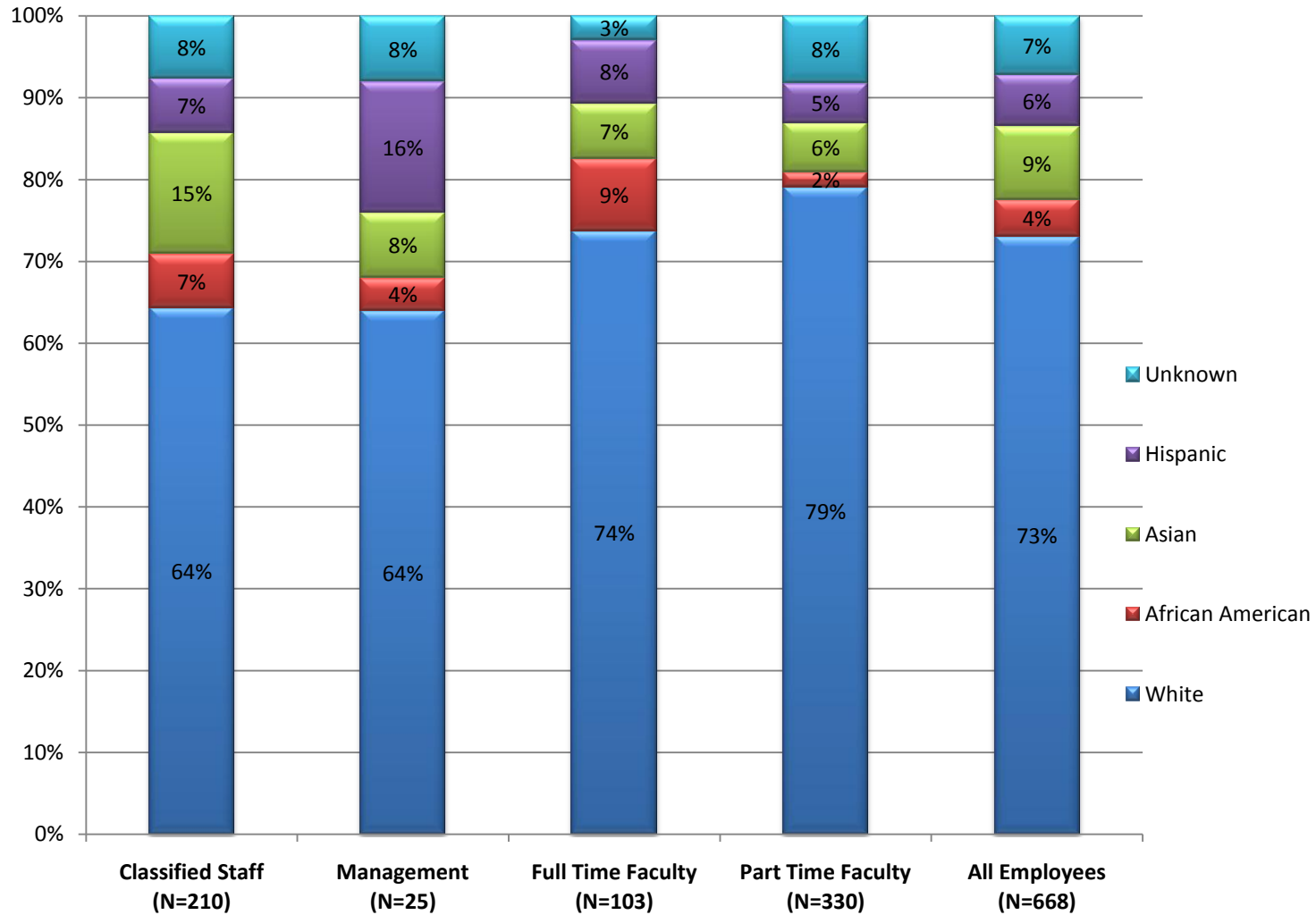
Employee Snapshot--Age



Employee Snapshot--Gender



Employee Snapshot--Ethnicity



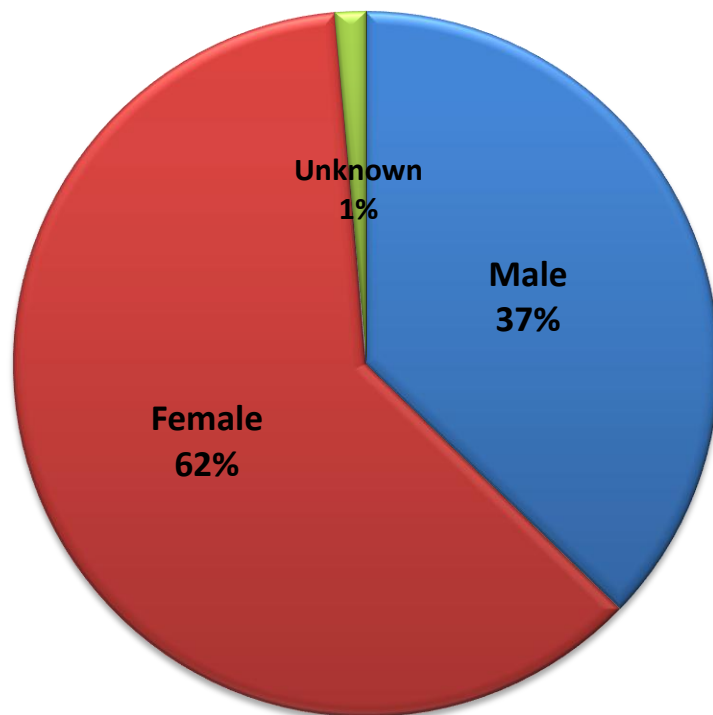
Student Snapshot!

Unduplicated Student Head Count for Fall 2010

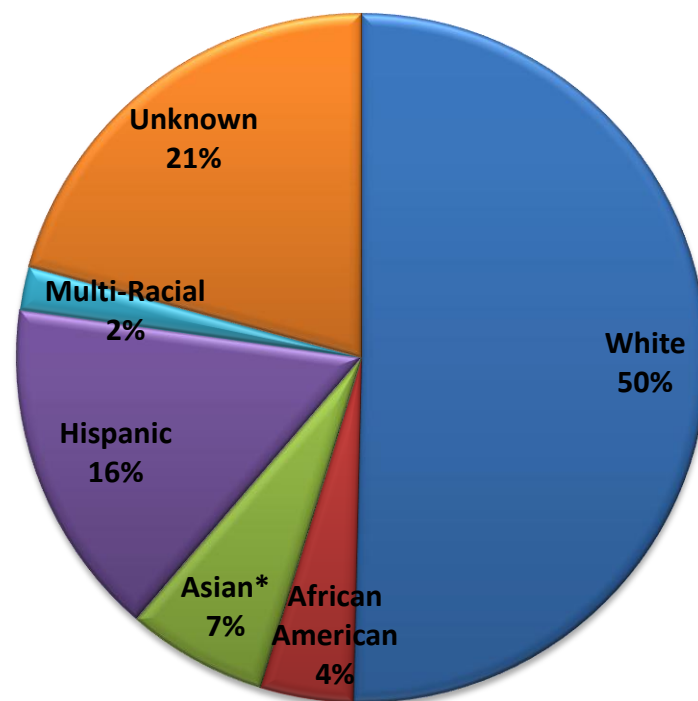
11,232

As of 1/12/2011
Including Credit, Non
Credit, and Community
Education

**Student Gender
Fall 2010**



**Student Ethnicity
Fall 2010**

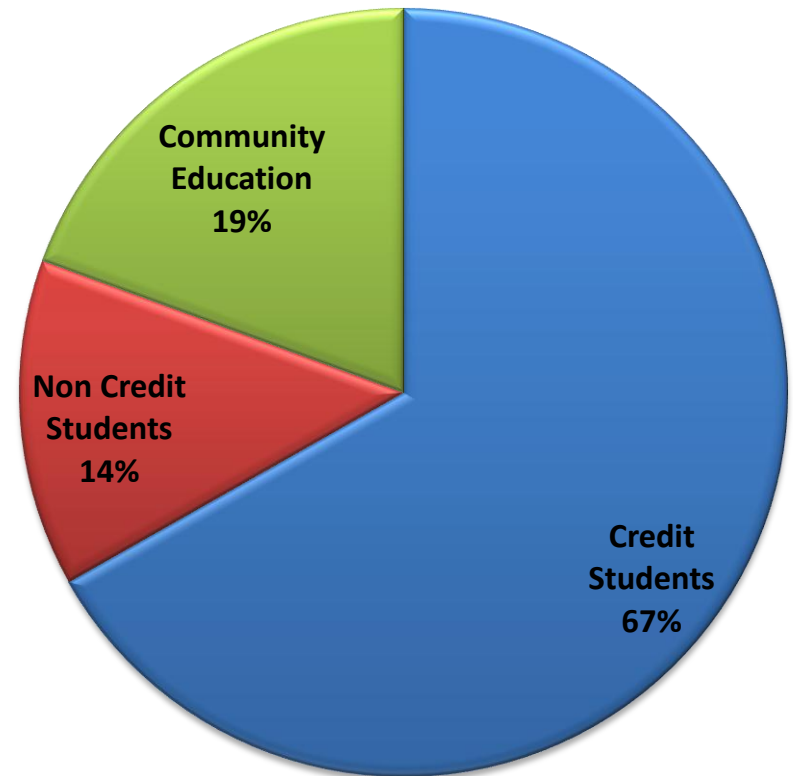
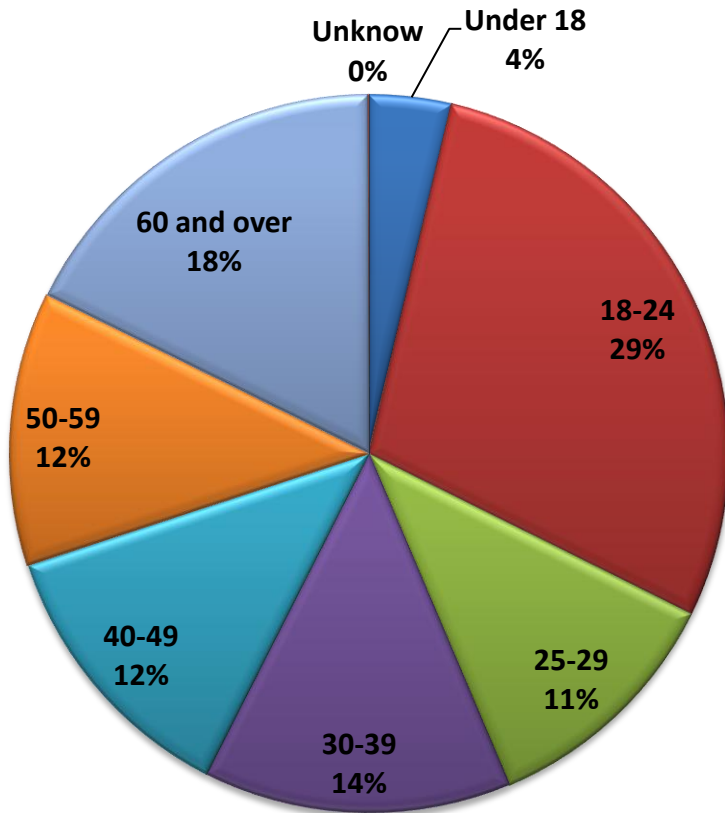


*Asian includes Asian, Pacific Islanders, and American Indian

Student Snapshot!

Student Age Fall 2010

Student Course Type Fall 2010



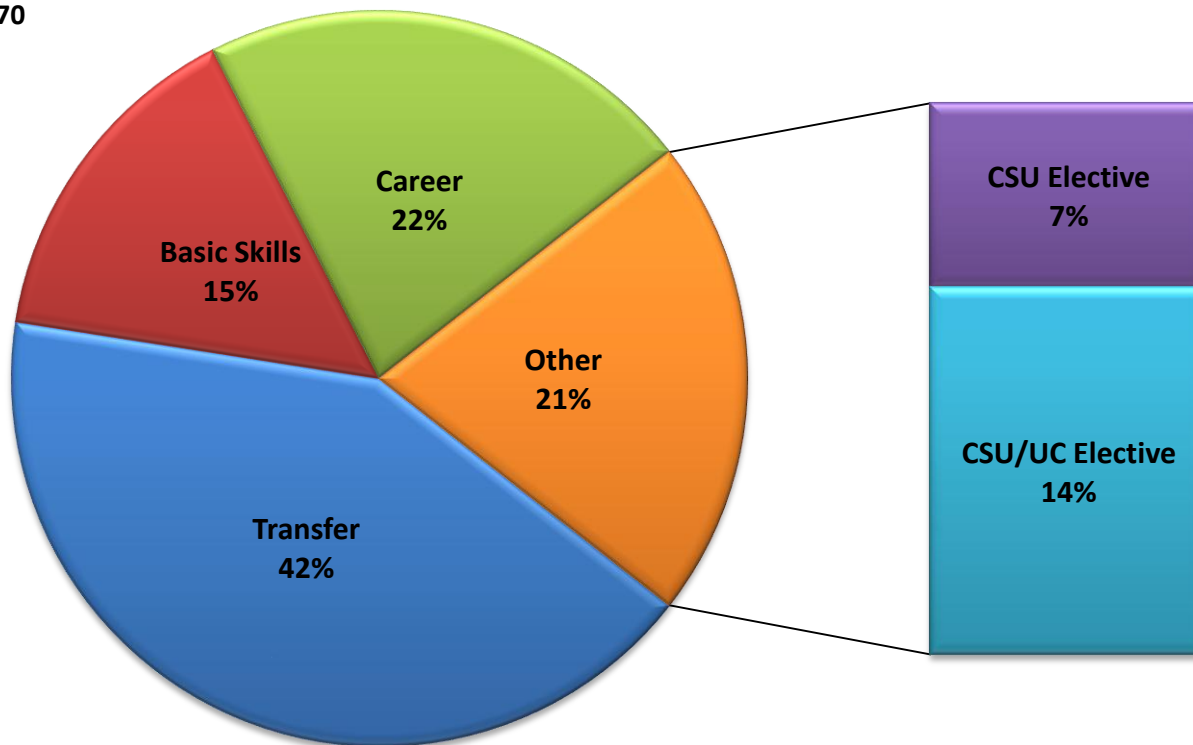
■ Under 18 ■ 18-24 ■ 25-29 ■ 30-39 ■ 40-49 ■ 50-59 ■ 60 and over ■ Unknown

A student can be included in more than one category.

Course Offering Patterns

CoM Course/Section Offering Patterns Fall 2010 Percentage of Courses/Sections

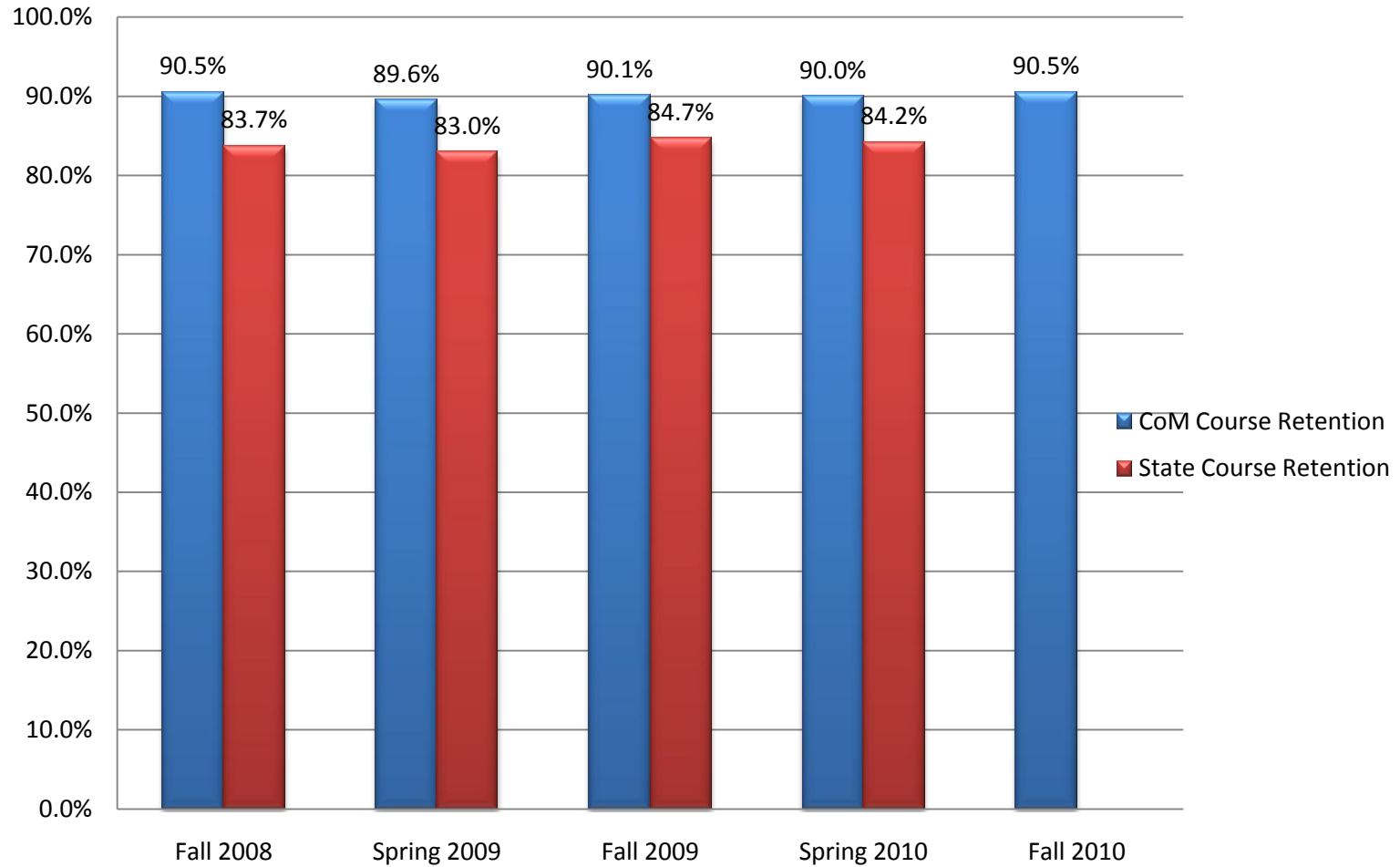
Courses: 619
Sections: 1070



*Transfer: The course is a CSU Elective and/or CSU/UC Elective, **and** at least one of the following--CSU General Ed Requirement, UC IGETC, and Major Prep course.*
Data Source: CoM OIM

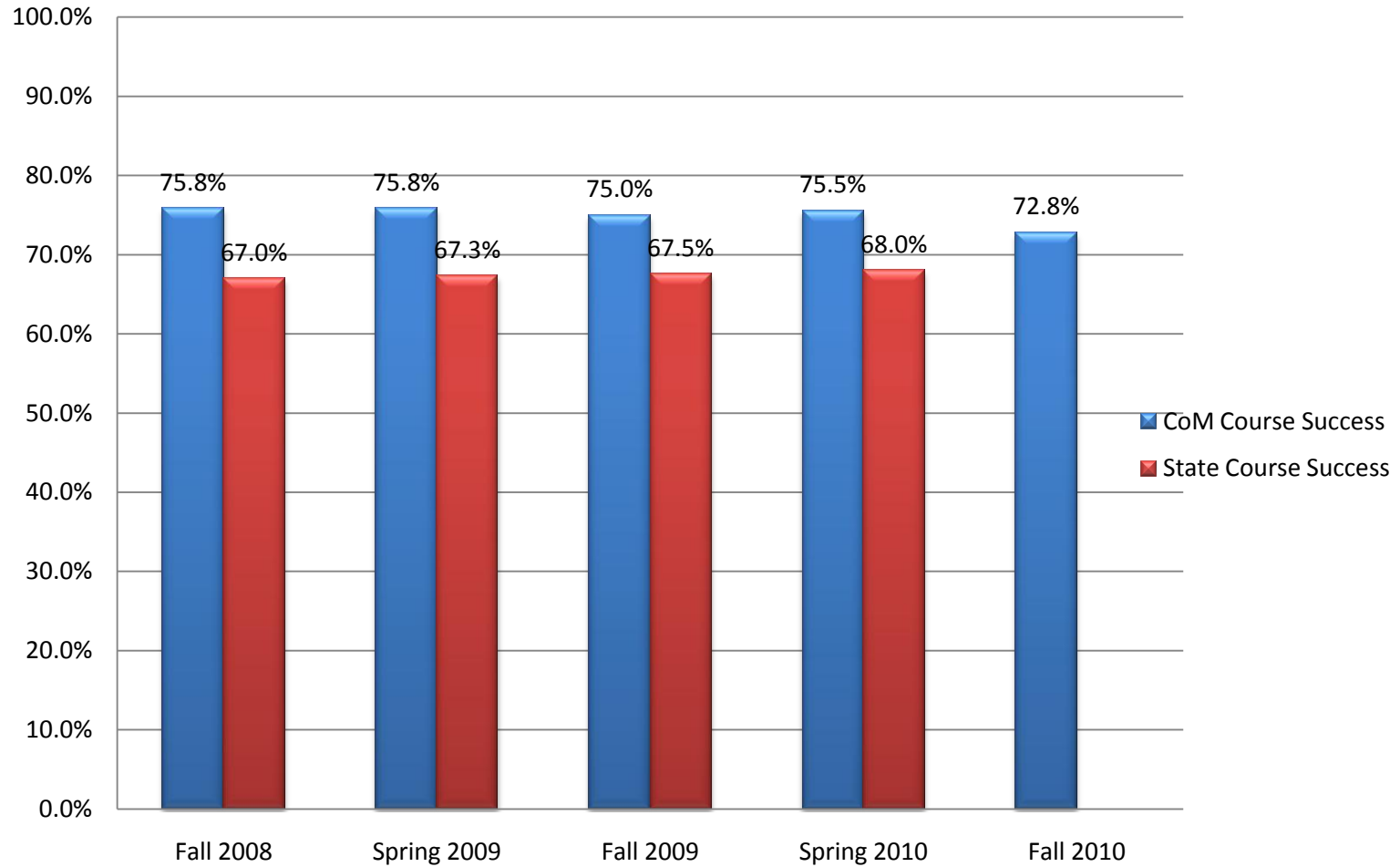
Course Retention and Success

Course Retention College of Marin vs. State



Course Retention and Success

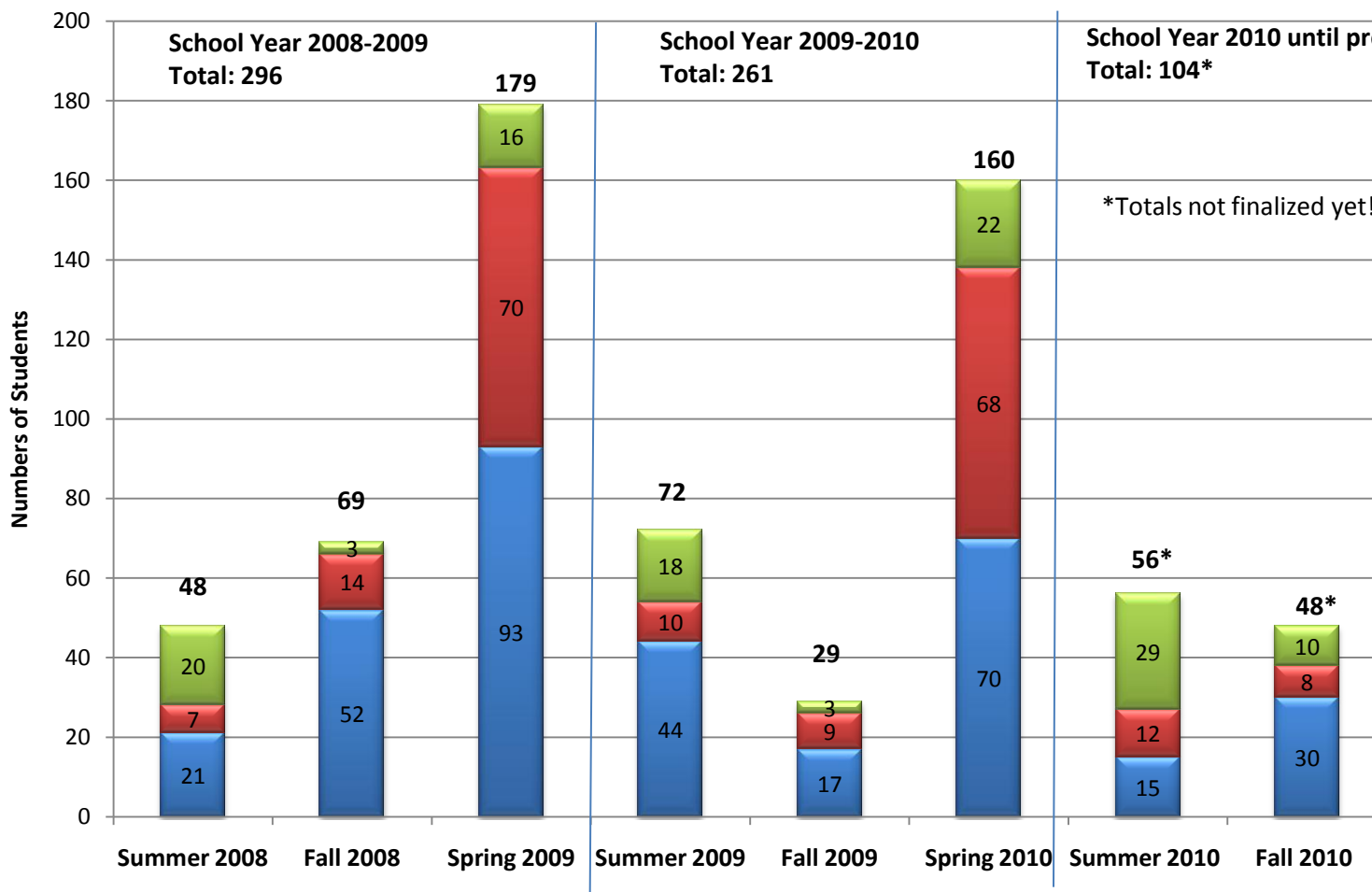
Course Success College of Marin vs. State



Degrees and Certificates Awarded

College of Marin Degrees and Certificates Awarded

- Career Certificate
- Associate in Science
- Associate in Arts



Dashboard

- A tool for
 - building data democracy
 - providing data at people’s fingertips
- Implementation plan and schedule
- Goal:
 - To provide faculty and staff with access to the Dashboard by Fall 2011

Institutional Overview

Enrollment

Student Achievement

FAQ / Help Center

Comparison Method

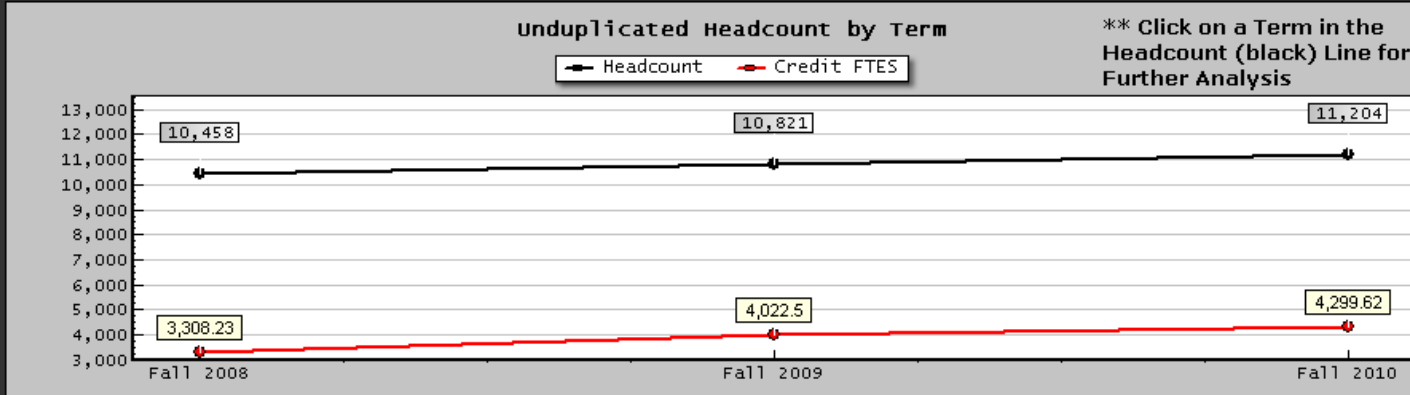
Fall to Fall

Select Term(s)

Code	Desc
20108	Fall 2010
20098	Fall 2009
20088	Fall 2008

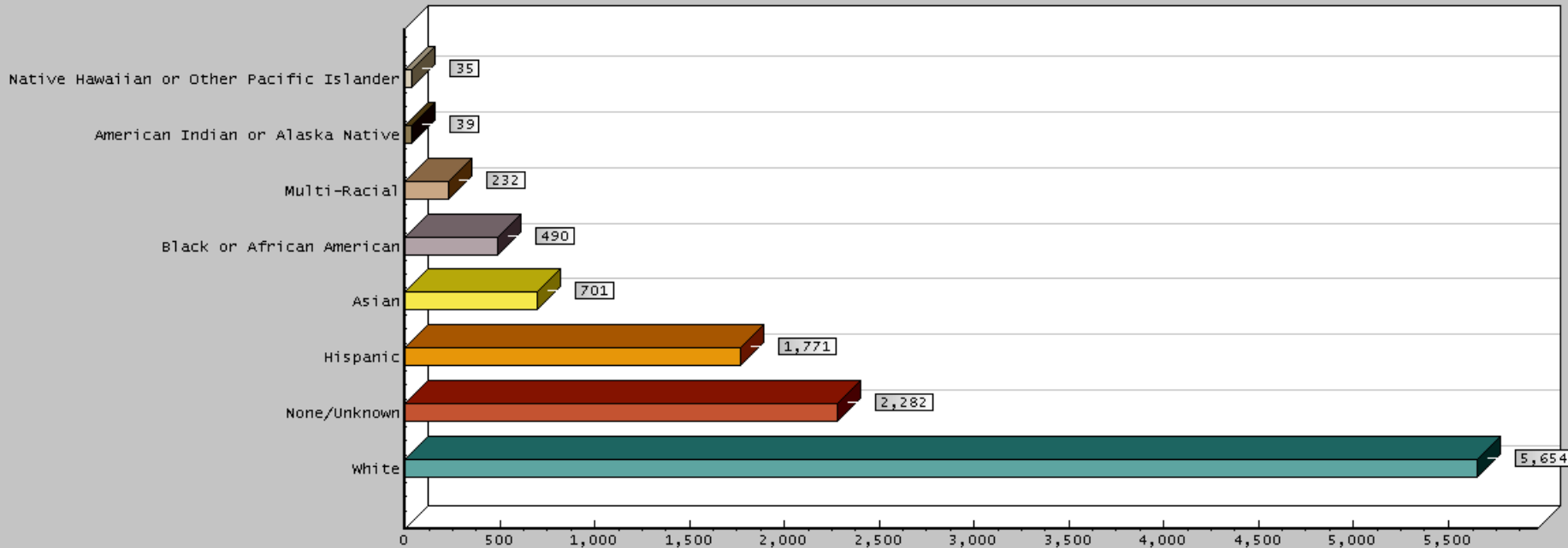
Chart Dimension

Ethnicity



Page 1 of 1

Fall 2010 Headcount by Ethnicity



Comparison Method

Fall to Fall

Select Term(s)

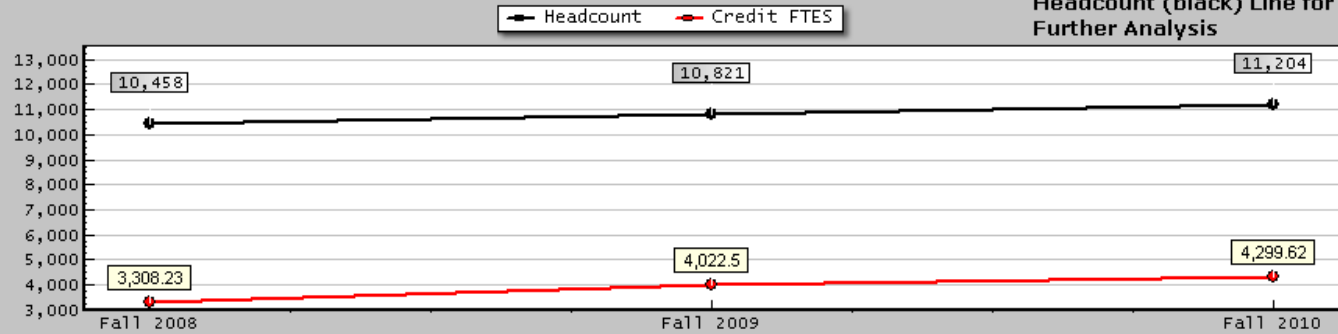
Code	Desc
20108	Fall 2010
20098	Fall 2009
20088	Fall 2008

Chart Dimension

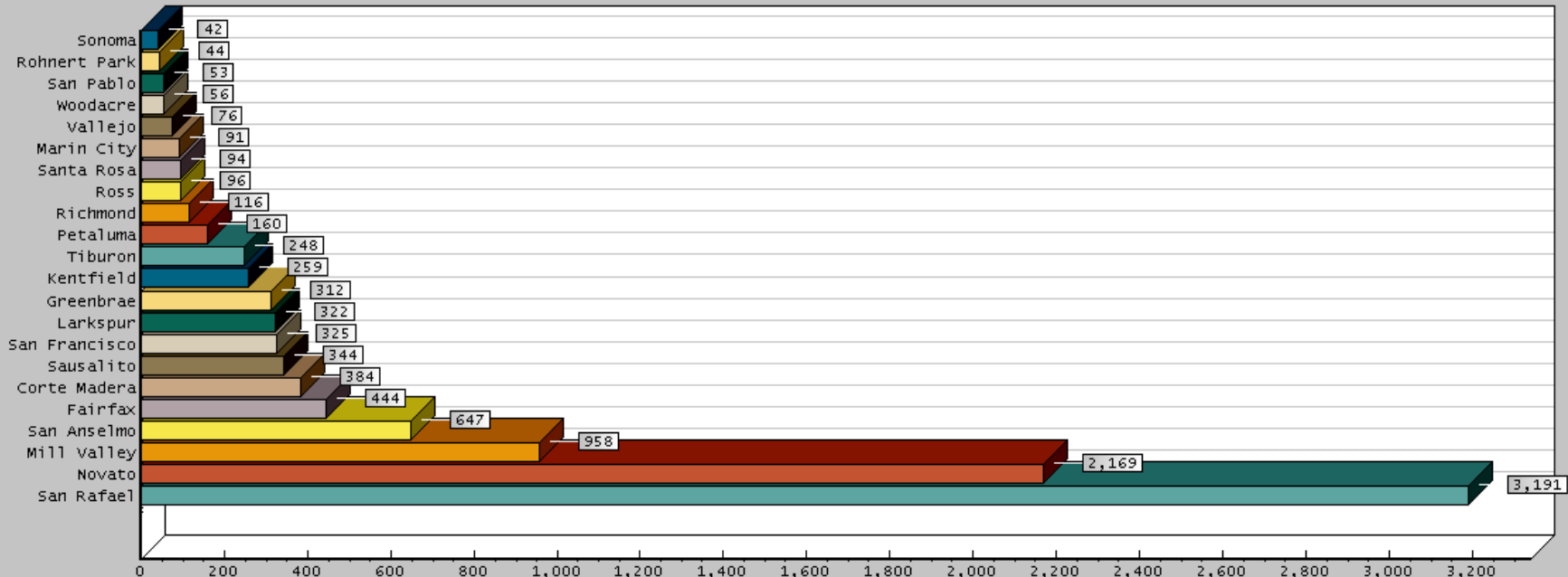
City

Unduplicated Headcount by Term

** Click on a Term in the Headcount (black) Line for Further Analysis



Fall 2010 Headcount by City



Institutional Overview

Enrollment

Student Achievement

FAQ / Help Center

Course Retention

Course Retention

Course Success

Cohort Tracking

Program Review

Degr/Cert Awarded

Student Persistence

Term(s):

Code	Desc
201210	Spring 2012 Credit/Noncre
201180	Fall 2011 Credit/Noncredit
201160	Summer 2011Credit/Noncr
201110	Spring 2011 Credit/Noncre
201080	Fall 2010 Credit/Noncredit

Division(s): All Divisions?

Code	Desc
***	All Divisions ***

Department(s): All Departments?

Code	Desc
***	All Departments

***** [CLICK HERE TO EXECUTE](#) *****

Available Dimensions

Gender Age Ethnicity Educational Goal Basic Skills PW Transfer PW Career_Tech_E Lifelong Learning Cultural Enrichment

Columns

Term

Division

Department

Subject

Course

Section

Grade

Division	Term	201080 - Fall 2010 Credit/Noncredit			Total by ROWS		
Department	Division	Total Hcnt	Retained Hcnt	Retention	Total Hcnt	Retained Hcnt	Retention
Subject	Value	Value	Value	Value	Value	Value	Value
Arts & Humanities	5104	4588	89.89%	5104	4588	89.89%	
Basic Skills	976	911	93.34%	976	911	93.34%	
Career Workforce Development	4649	4297	92.43%	4649	4297	92.43%	
Math & Sciences	7679	6864	89.39%	7679	6864	89.39%	
Student Devel Special Services	202	189	93.56%	202	189	93.56%	
Total by COLUMNS	18610	16849	90.54%	18610	16849	90.54%	