

NEW ACADEMIC CENTER

DRAFT SWING SPACE COST ESTIMATE

ROOM	AREA	NAME	DESCRIPTION	FURNITURE CATEGORY	EQUIPMENT	SWING MOVE (AUSTIN / OTHER)	PERMANENT MOVE TO AUSTIN	FINAL MOVE TO NAC	SURPLUS COSTS	TOTAL
ADMINISTRATIVE CENTER										
119	OFFICE OF THE PRESIDENT	Melinda Molloy	Assistant	General Office	PC/Printer/Fax	\$ 1,000		\$ 350	\$ -	\$ 1,350
120	OFFICE OF THE PRESIDENT	Support	Small Conference	Conference	Con.Phone/projector/Wh-Bd	\$ 1,200		\$ 100		\$ 1,300
121	OFFICE OF THE PRESIDENT	David Wain Coon	President	Suite	PC/Printer/Fax	\$ 2,500		\$ 350		\$ 2,850
123	OFFICE OF THE PRESIDENT	Betty Schlapper	Admin	General Office	PC/Printer/Fax	\$ 1,000		\$ 350		\$ 1,350
125	OFFICE OF THE PRESIDENT	Support	Support	None/ countertops-Casework/Storage	Copier/Fax/Mail Prep/Gen office misc.	\$ 1,500		\$ 350		\$ 1,850
										\$ -
118	DIRECTOR OF MODERNIZATION	Maridel Barr	Admin	General Office	PC/Printer/Fax	\$ 1,000	\$ 1,000			\$ 2,000
116	DIRECTOR OF MODERNIZATION	Laura McCarty	Director	General Office	PC/Printer/Fax	\$ 1,000	\$ 1,000			\$ 2,000
										\$ -
114	HR	Leslie Lee	Assistant	General Office	PC/Printer/Fax	\$ 1,000	\$ 1,000			\$ 2,000
109	HR	Devon Kinka	Assistant	General Office	PC/Printer/Fax	\$ 1,000	\$ 1,000			\$ 2,000
107	HR	Linda Beam	Head	General Office	PC/Printer/Fax	\$ 1,000	\$ 1,000			\$ 2,000
106	HR	Pearl Monemzadeh	Assistant	General Office	PC/Printer/Fax	\$ 1,000	\$ 1,000			\$ 2,000
105	HR	Kristen Gisel	Assistant	General Office	PC/Printer/Fax	\$ 1,000	\$ 1,000			\$ 2,000
124	HR	Julia Breakstone	Assistant	General Office	PC/Printer/Fax Large Copier	\$ 1,500	\$ 1,500			\$ 3,000
112	HR	Connie Lehua	Personnel	General Office	PC/Printer/Fax	\$ 1,000	\$ 1,000			\$ 2,000
111	HR	Claudette Moldowney	Personnel	General Office	PC/Printer/Fax	\$ 1,000	\$ 1,000			\$ 2,000
										\$ -
103	COMMUNICATIONS	Nicole Cruz	Assistant	General Office	PC/Printer/Fax	\$ 1,000		\$ 350		\$ 1,350
104	COMMUNICATIONS	Cathy Summa-Wolf	Head	General Office	PC/Printer/Fax	\$ 1,000		\$ 350		\$ 1,350
										\$ -
101	ORG. DEV. PLANNING	Chialin Hsieh	Head	General Office	PC/Printer/Fax	\$ 1,000		\$ 350		\$ 1,350
102	ORG. DEV. PLANNING	Barbara David	Assistant	General Office	PC/Printer/Fax	\$ 1,000		\$ 350		\$ 1,350
										\$ -
108	CONFERENCE	Support	Large Conference	Conference suite	Conference	\$ 3,000		\$ 100		\$ 3,100
										\$ -
BUSINESS MANAGEMENT CENTER										
103	PT SHARED OFFICE	7 Faculty	PT Faculty	Workstations	PCs/Printers	\$ 3,500		\$ 1,000		\$ 4,500
Various	INSTRUCTION** See note below	Classrooms	4 General Classrooms	Desks & Chairs	Projector/Screen	\$ 1,200		\$ 250		\$ 1,450
										\$ -
HARLAN CENTER										
										\$ -

NEW ACADEMIC CENTER

DRAFT SWING SPACE COST ESTIMATE

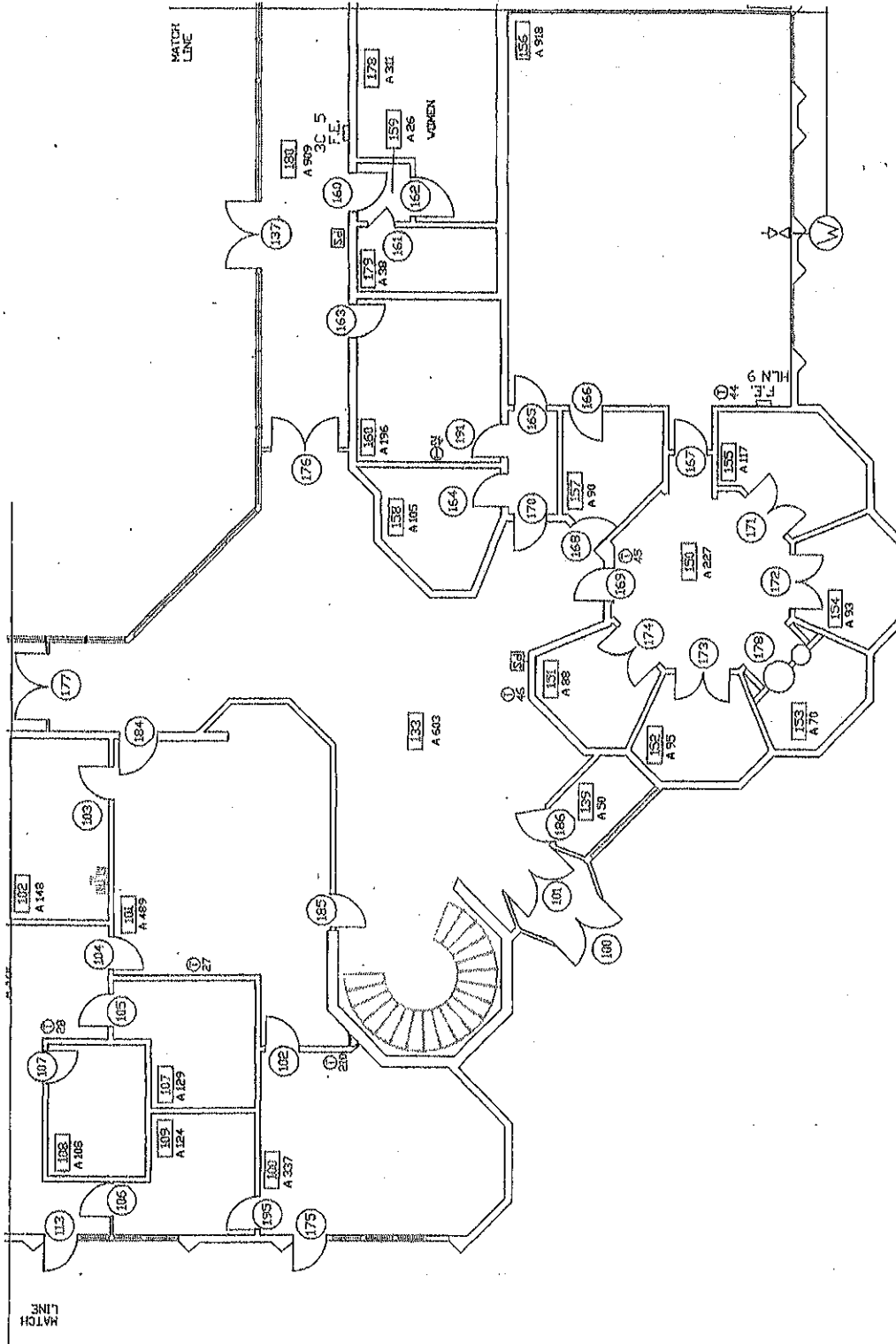
101	ESL	25 Faculty	PT Faculty	Workstations	PCS/ Large Copier / Fax / Printers	\$ 3,500		\$ 500		\$ 4,000
123	ESL	8 Faculty	PT Faculty	Workstations	PCs/Printers	\$ 3,500		\$ 500		\$ 4,000
										\$ -
100	STUDENT LEARNING	Ken Meier	VP	General Office / Small Conference	PC/Printer/Fax	\$ 1,200		\$ 1,000		\$ 2,200
109	STUDENT LEARNING	Carol Scali	Assistant	General Office	PC/Printer/Fax	\$ 1,000		\$ 350		\$ 1,350
										\$ -
118	FILM	Sandy Handsher	Faculty	General Office	PC/Printer/Fax	\$ 1,000		\$ 350		\$ 1,350
119	ENGLISH	3 Faculty	PT Faculty	General Office	PC/Printer/Fax	\$ 1,000		\$ 350		\$ 1,350
125	ASL / Dean Assistant	1 Faculty; 1 Staff	FT	General Office	PC/Printer/Fax	\$ 1,000		\$ 350		\$ 1,350
114	SPEECH	Pat O'Keefe	FT Faculty	General Office	PC/Printer/Fax	\$ 1,000		\$ 350		\$ 1,350
121	SOCIAL SCIENCE	Bonnie Borenstein	FT Faculty	General Office	PC/Printer/Fax	\$ 1,000		\$ 350		\$ 1,350
138	ENGLISH	Sara MacKinnon	FT Faculty	General Office	PC/Printer/Fax	\$ 1,000		\$ 350		\$ 1,350
212	SOCIAL SCIENCE	John Marmysa	FT Faculty	General Office	PC/Printer/Fax	\$ 1,000		\$ 350		\$ 1,350
216	SOCIAL SCIENCE	3 Faculty	PT Faculty	General Office	PC/Printer/Fax	\$ 1,000		\$ 350		\$ 1,350
218	SOCIAL SCIENCE	3 Faculty	PT Faculty	General Office	PC/Printer/Fax	\$ 1,000		\$ 350		\$ 1,350
220	SOCIAL SCIENCE	3 Faculty	PT Faculty	General Office	PC/Printer/Fax	\$ 1,000		\$ 350		\$ 1,350
224	BUSINESS	Brian Wilson	FT Faculty	General Office	PC/Printer/Fax	\$ 1,000		\$ 350		\$ 1,350
219	ENGLISH	John Sutherland	FT Faculty	General Office	PC/Printer/Fax	\$ 1,000		\$ 350		\$ 1,350
										\$ -
105	OIM	Carrie Tores James Kuromiya	FT Staff	General Office	PC/Printer/Fax	\$ 1,200		\$ 350		\$ 1,550
										\$ -
225	ARTS	David Snyder	Dean	General Office / Small Conference	PC/Printer/Fax	\$ 1,200		\$ 1,000		\$ 2,200
222	ARTS	Eileen Acker	Assistant	General Office	PC/Printer/Fax	\$ 1,000		\$ 350		\$ 1,350
										\$ -
Various	INSTRUCTION	Classrooms	6 General Classrooms	Desks & Chairs	Projector/Screen	\$ 1,800		\$ 250		\$ 2,050
										\$ -
OLNEY HALL										
										\$ -
Various	INSTRUCTION	Classrooms	9 General Classrooms	Desks & Chairs	Projector/Screen	\$ 2,700		\$ 250		\$ 2,950
93	Projection Room	Projection	Projection	Chairs & Tables	Screens/AV	\$ 1,000				\$ 1,000
96	AUDITORIUM	Auditorium	Auditorium	Fixed Seating	None	\$ 500				\$ 500
81	Storage Room	Storage	Storage	File Cabinets & Shelving	None	\$ 1,000				\$ 1,000
										\$ -
TB-1 COM POLICE STATION										
										\$ -
121	COM POLICE	File Room	File Storage	File cabinets; table	None		\$ 1,000			\$ 1,000

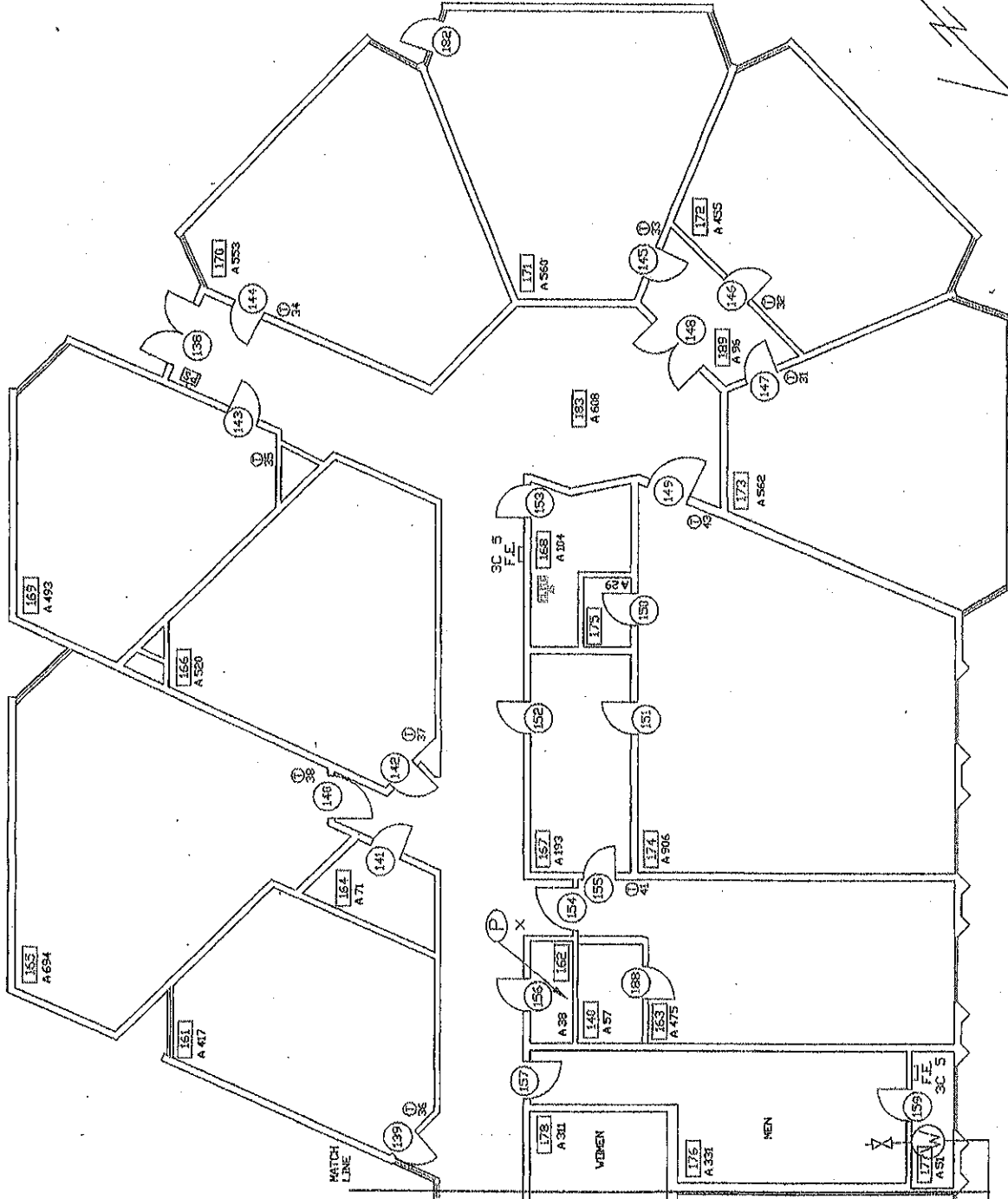
NEW ACADEMIC CENTER

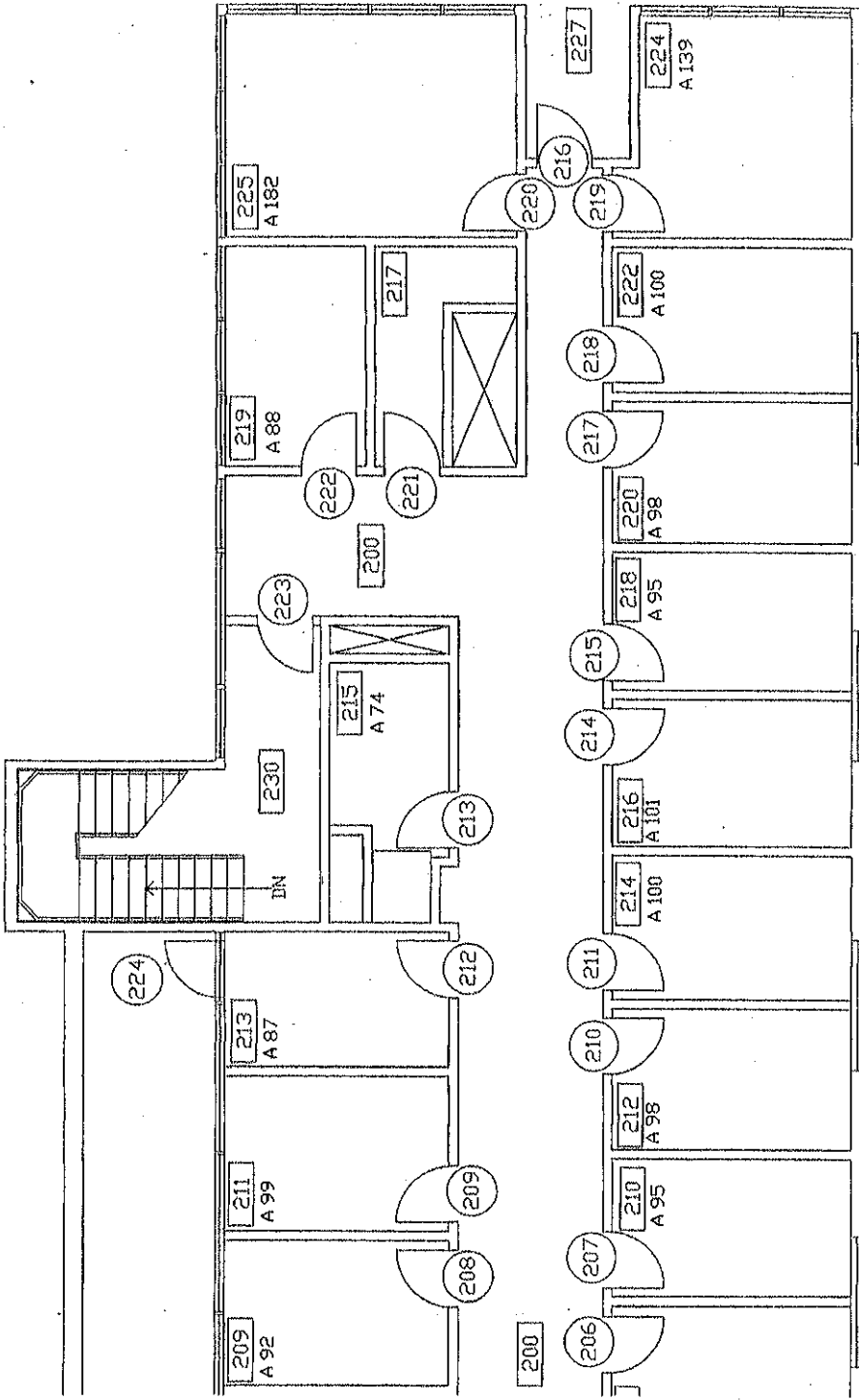
DRAFT SWING SPACE COST ESTIMATE

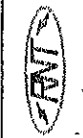
105	COM POLICE	General Reception Room	Window Reception	General Office	PC/Printer/Fax		\$ 1,500			\$ 1,500	
107	COM POLICE	Evidence Room	Evidence Storage	File cabinets; table	None		\$ 500			\$ 500	
110	COM POLICE	Interview Room	Interview Space	Tables & Chairs	None		\$ 500			\$ 500	
111	COM POLICE	Officer	Office	General Office	PC/Printer/Fax		\$ 1,000			\$ 1,000	
113	COM POLICE	Officer	Office	General Office	PC/Printer/Fax		\$ 1,000			\$ 1,000	
114	COM POLICE	Officer	Office	General Office	PC/Printer/Fax		\$ 1,000			\$ 1,000	
115	COM POLICE	Officer	Office	General Office	PC/Printer/Fax		\$ 1,000			\$ 1,000	
116	COM POLICE	Officer	Office	General Office	PC/Printer/Fax		\$ 1,000			\$ 1,000	
117	COM POLICE	Officer	Office	General Office	PC/Printer/Fax		\$ 1,000			\$ 1,000	
106	COM POLICE	Officer	Office	General Office	PC/Printer/Fax		\$ 1,000			\$ 1,000	
108	COM POLICE	Officer	Office	General Office	PC/Printer/Fax		\$ 1,000			\$ 1,000	
										\$ -	
SHERIFF'S TRAILER											
										\$ -	
100	SHERIFF	Staff	Offices	General Office	PC/Printer/Fax		\$ 7,500			\$ 7,500	
										\$ -	
ALLOWANCES											
										\$ -	
1	GENERAL SURPLUS COSTS						\$ 2,500	\$ 2,500	\$ 5,000	\$ 10,000	
2	GENERAL AV ALLOWNACE						\$ 2,500	\$ 2,500		\$ 5,000	
3	GENERAL IT ALLOWNACE						\$ 2,500	\$ 2,500		\$ 5,000	
										\$ -	
TOTALS							\$ 68,500	\$ 37,000	\$ 18,000	\$ -	\$ 123,500

NOTES:	General Office	Defined as desk; (1) shelving unit(s); misc. desk pedestals; (1) low to medium file cabinets; tel & fax line
	Workstations	Multiple workstations (average 12 stations); 8 tall file cabinets; tel at ea. workstation; (1) fax line per office
	Sheriff's Office	General Allowance for move into Austin Science Center after NAC completion.
	COM Police	General Allowance for move into Austin Science Center after NAC completion.
	Discuss (E) Classroom furniture	Existing classroom furniture from demolished structures to Austin classrooms? Replace (E) lab benches with standard desks/tables & chairs.
	Classroom Moves Misc.	Assume costs for misc classroom equipment per class.



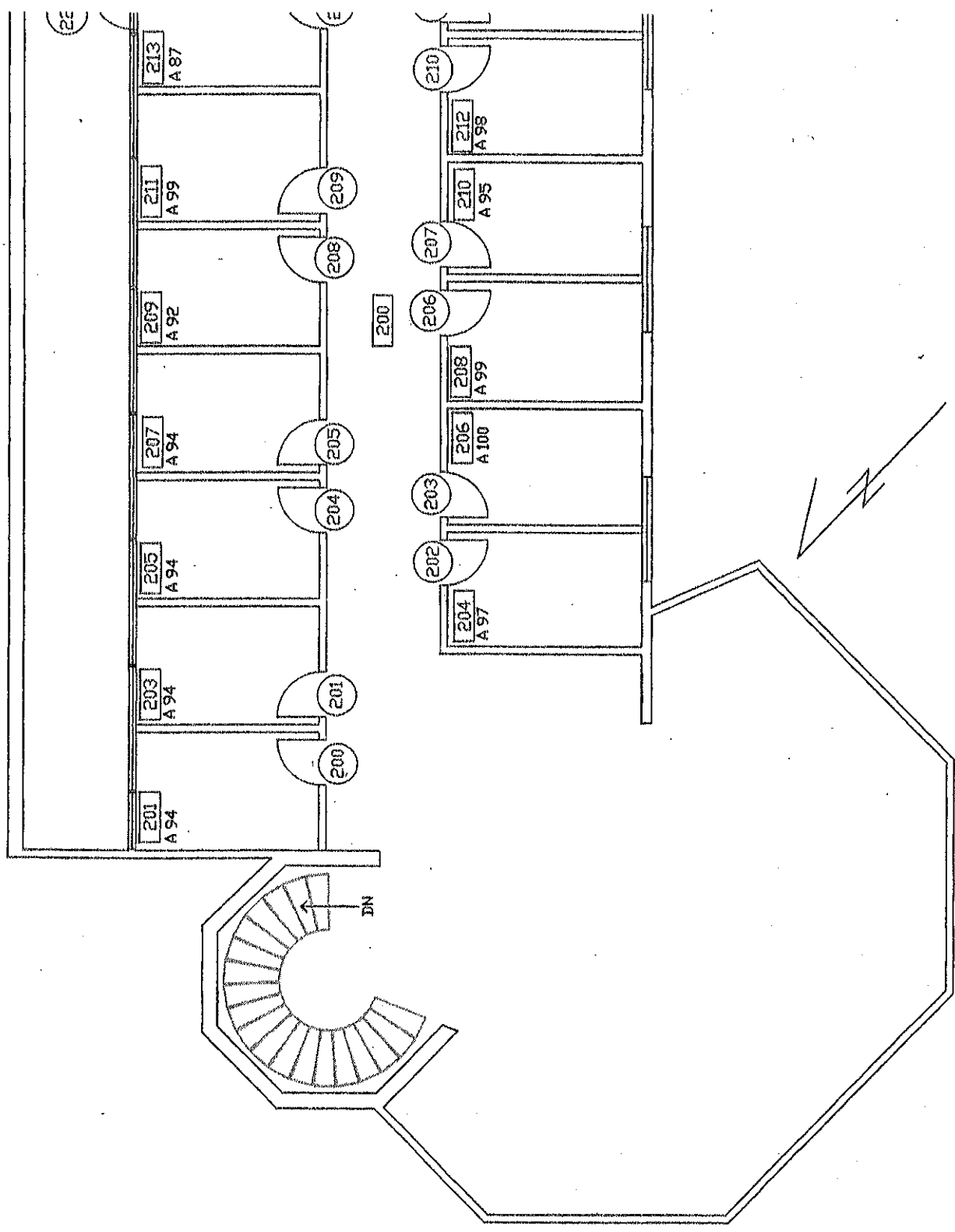


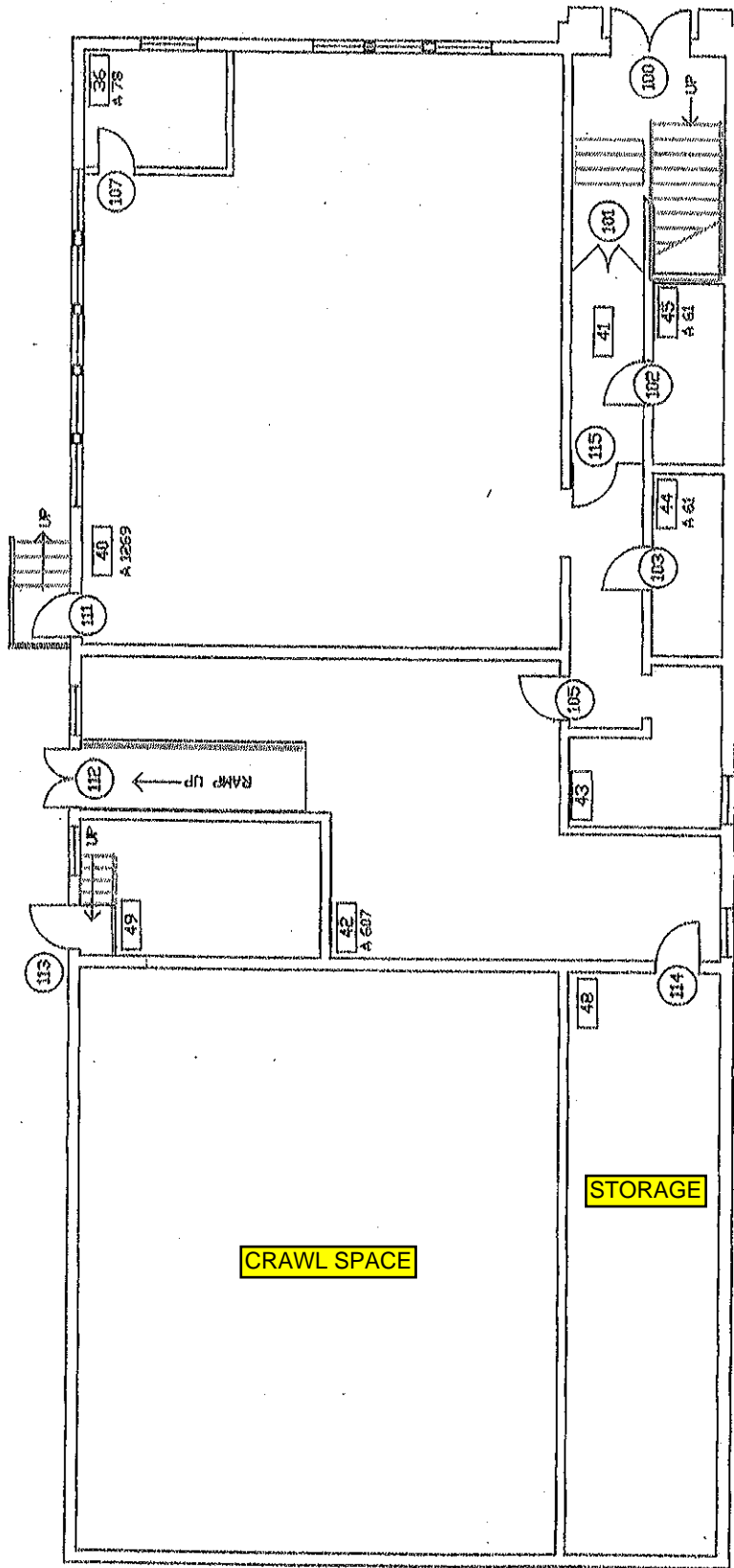




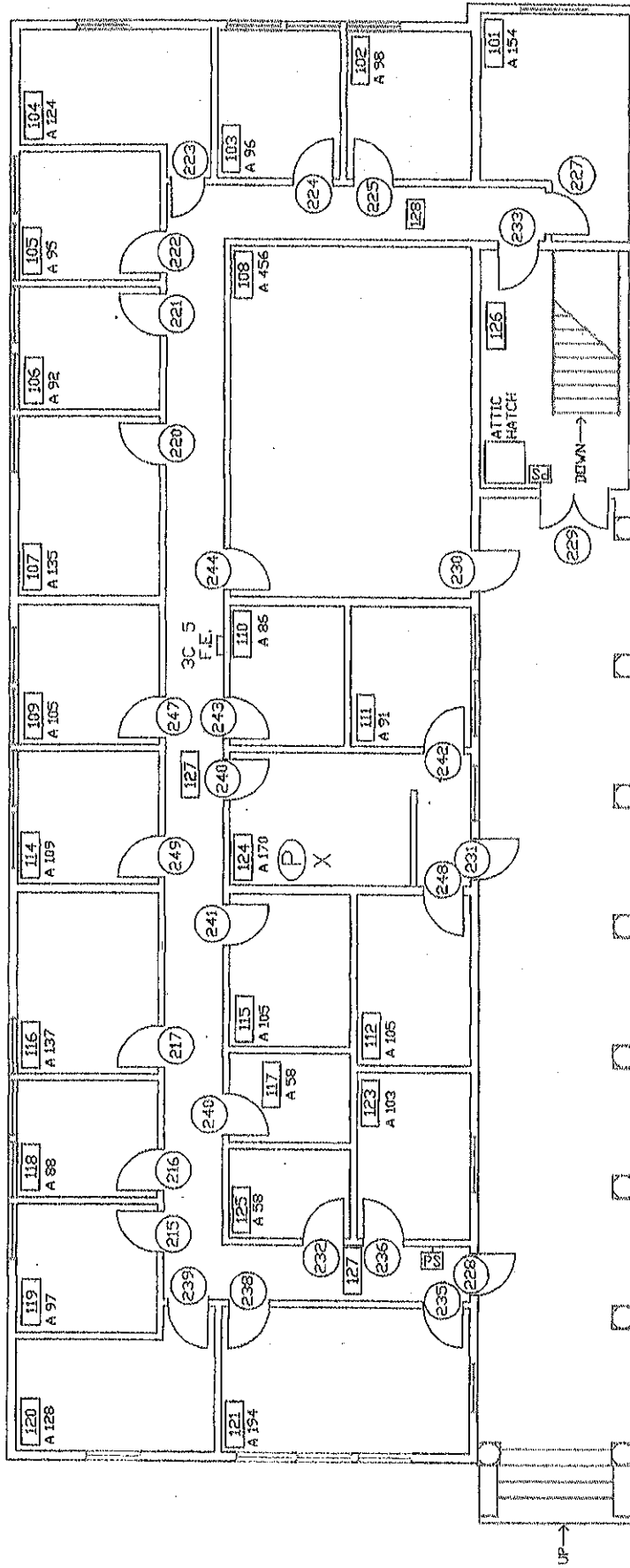
HARLAN CENTER SECOND FLOOR NORTH

Marin Community College
Kentfield Campus



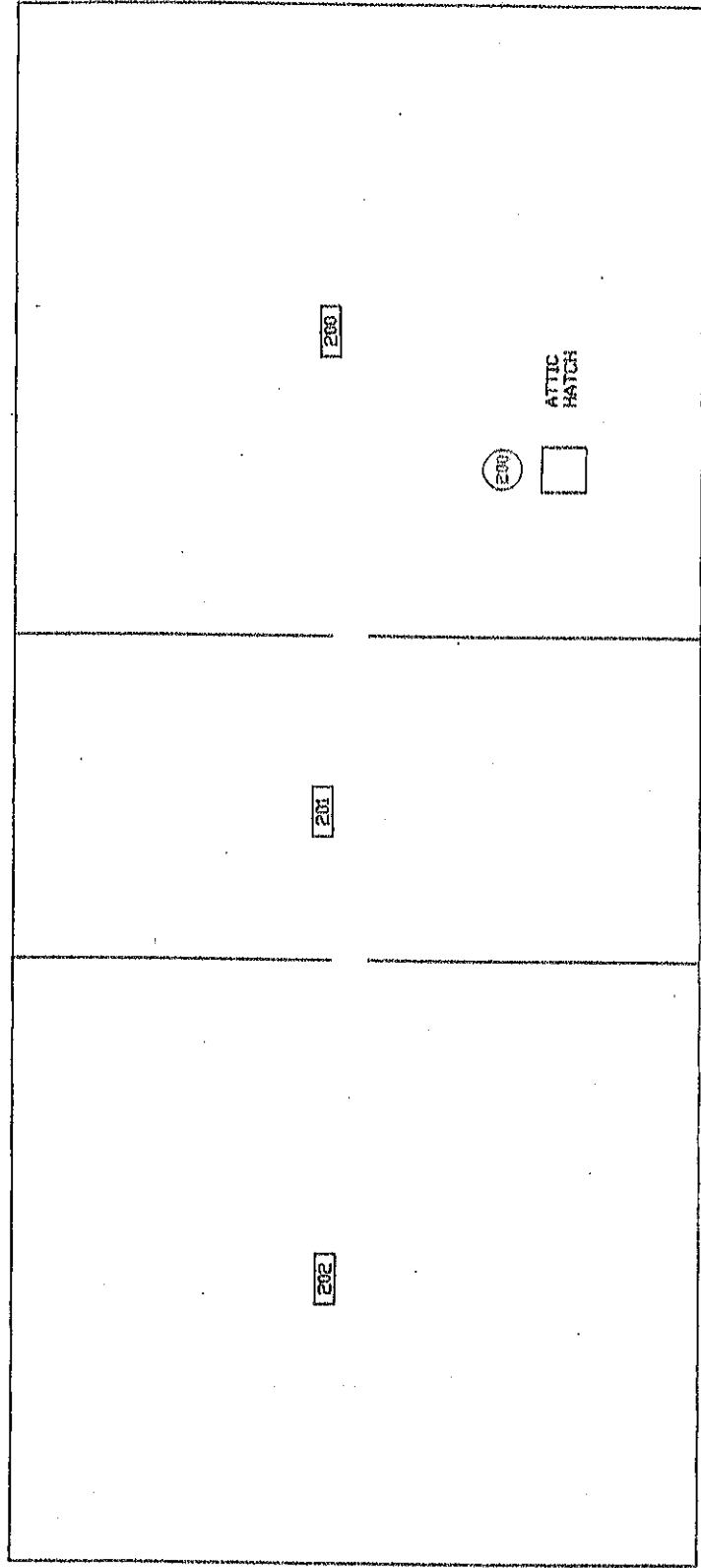


ADMINISTRATIVE CENTER
FIRST FLOOR



(1)

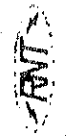
(1)

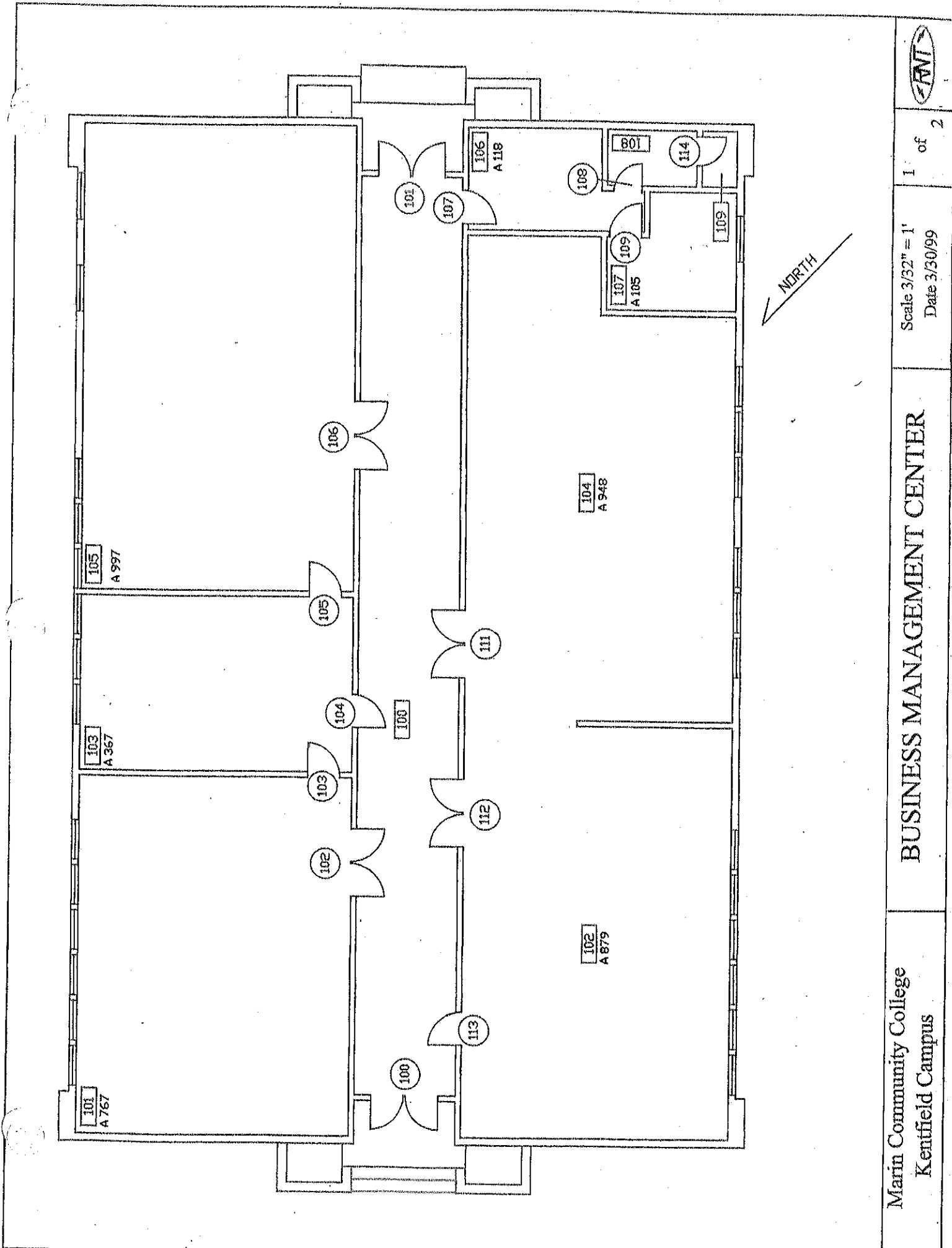


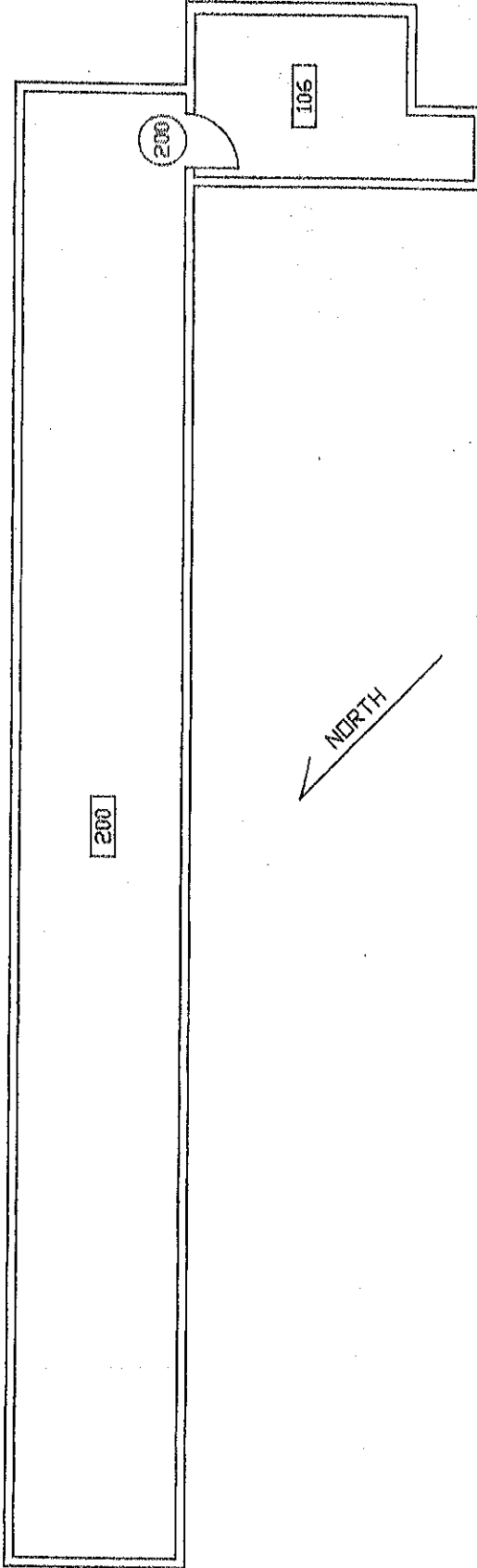
Marin Community College
 Kentfield Campus

ADMINISTRATIVE CENTER
 ATTIC

Scale 5/64" = 1'
 Date 9/24/99







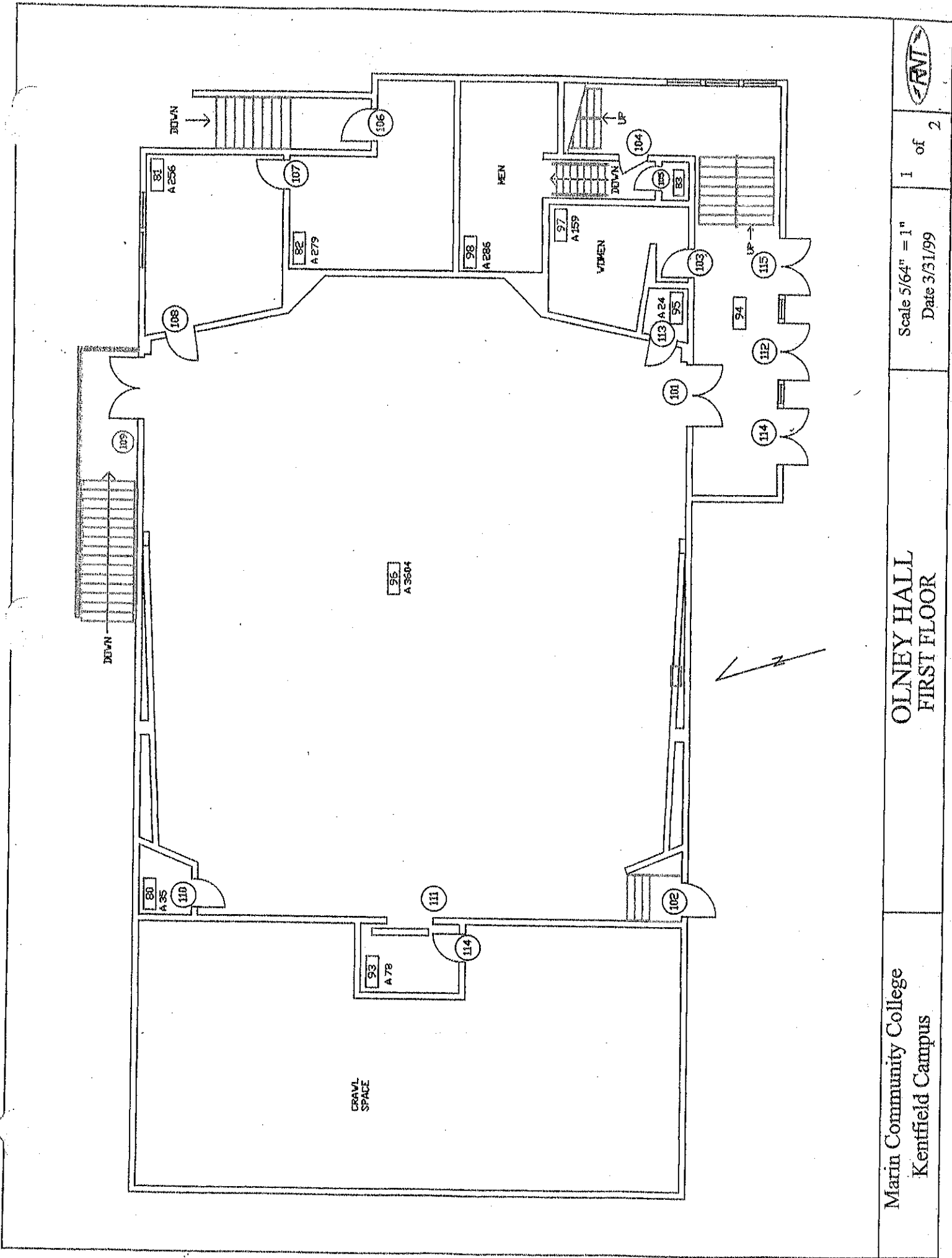
Marin Community College
Kenfield Campus

**BUSINESS MANAGEMENT CENTER
ATTIC**

Scale 1" = 10'
Date 9/24/99

2 of 2





Marin Community College
Kentfield Campus

OLNEY HALL
FIRST FLOOR

Scale 5/64" = 1"
Date 3/31/99



