

# Gateway Complex

Architectural, Engineering, and Professional  
Construction Services Consultants

Request for Qualifications

Mandatory Pre-Qualifications Conference

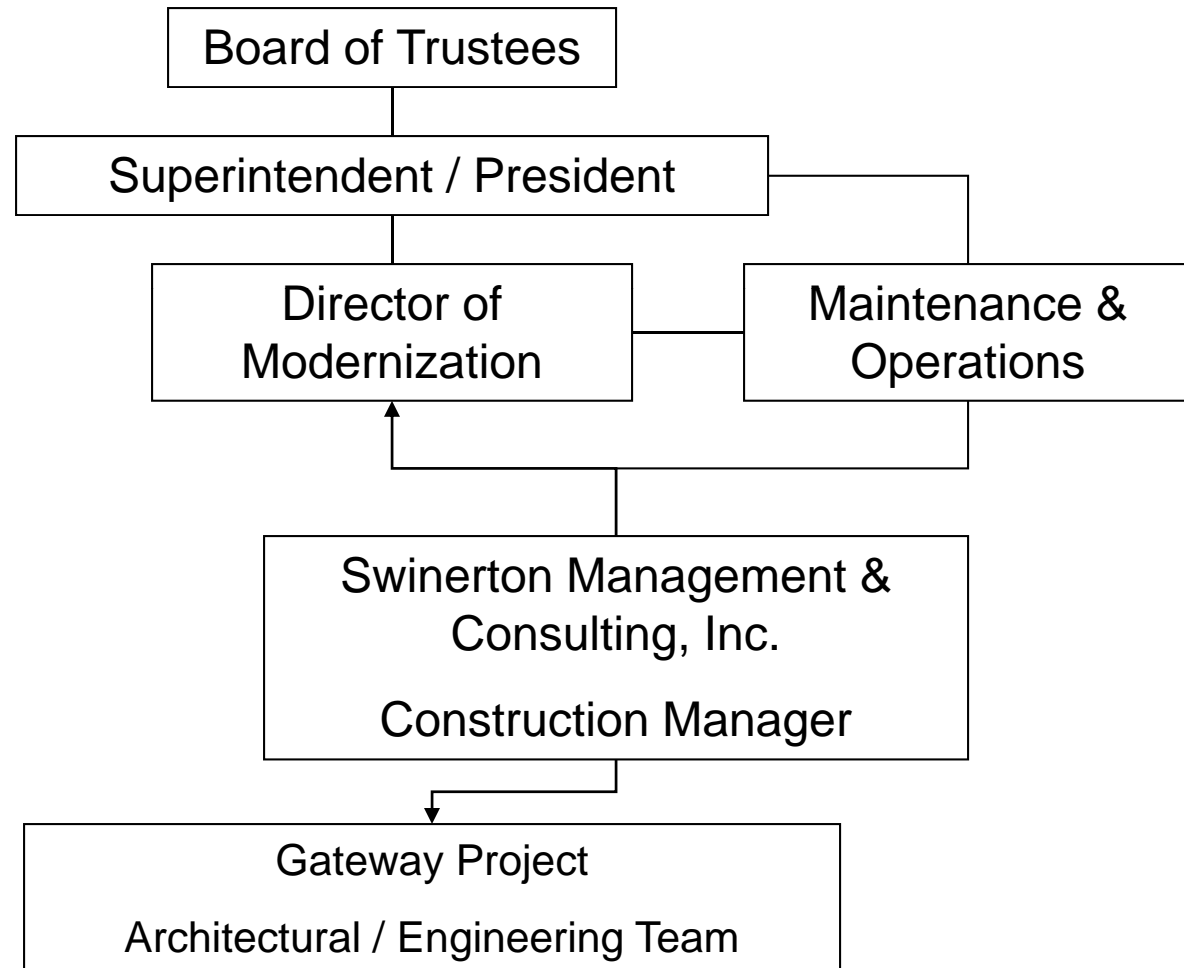
Tuesday, July 14, 2009



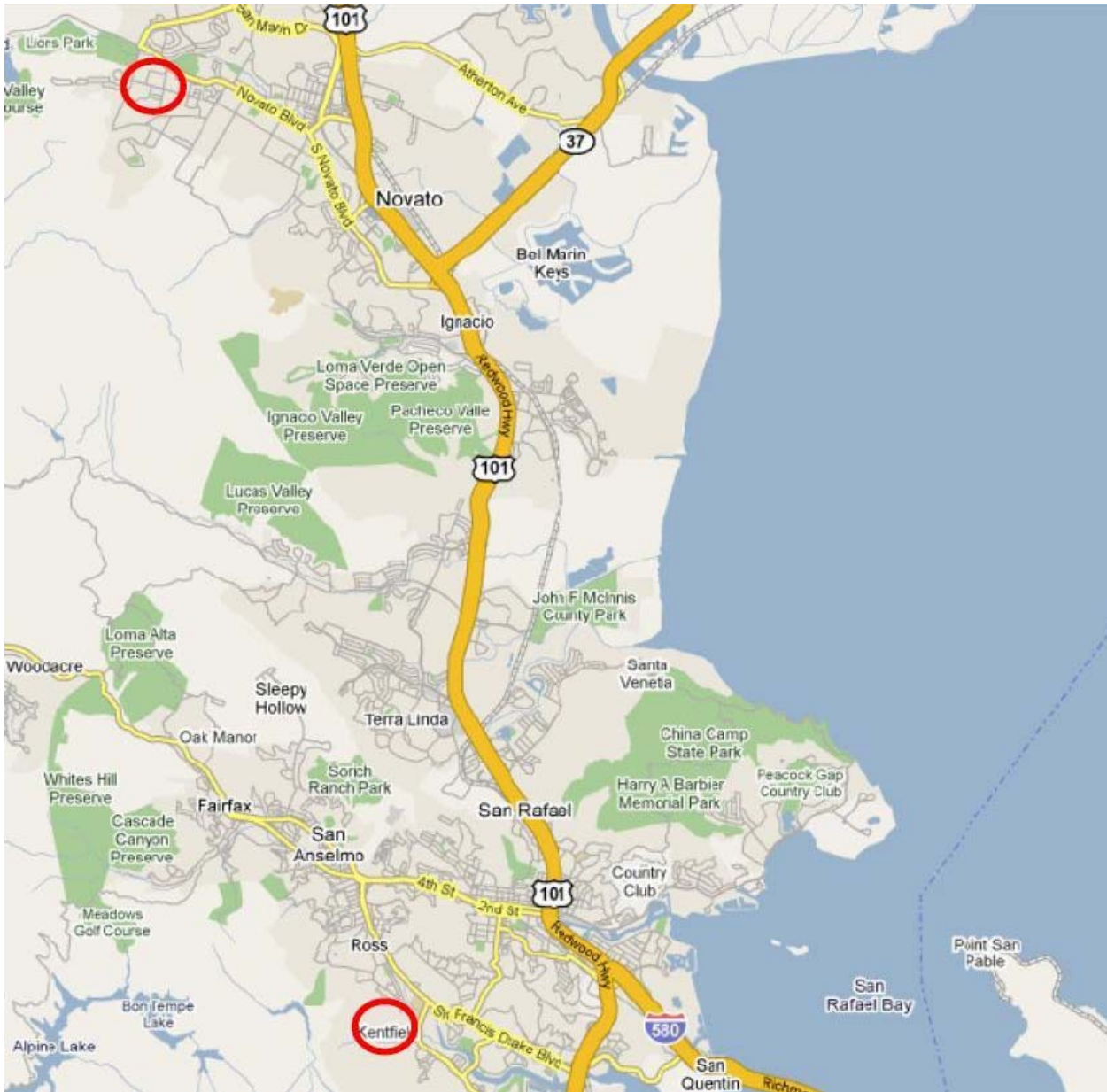
# Welcome

- V-Anne Chernock
  - Director of Modernization
- Robert Thompson
  - Director of Maintenance & Operations
- Leigh Sata
  - Program Manager, Swinerton Management & Consulting, Inc.

# Organizational Chart

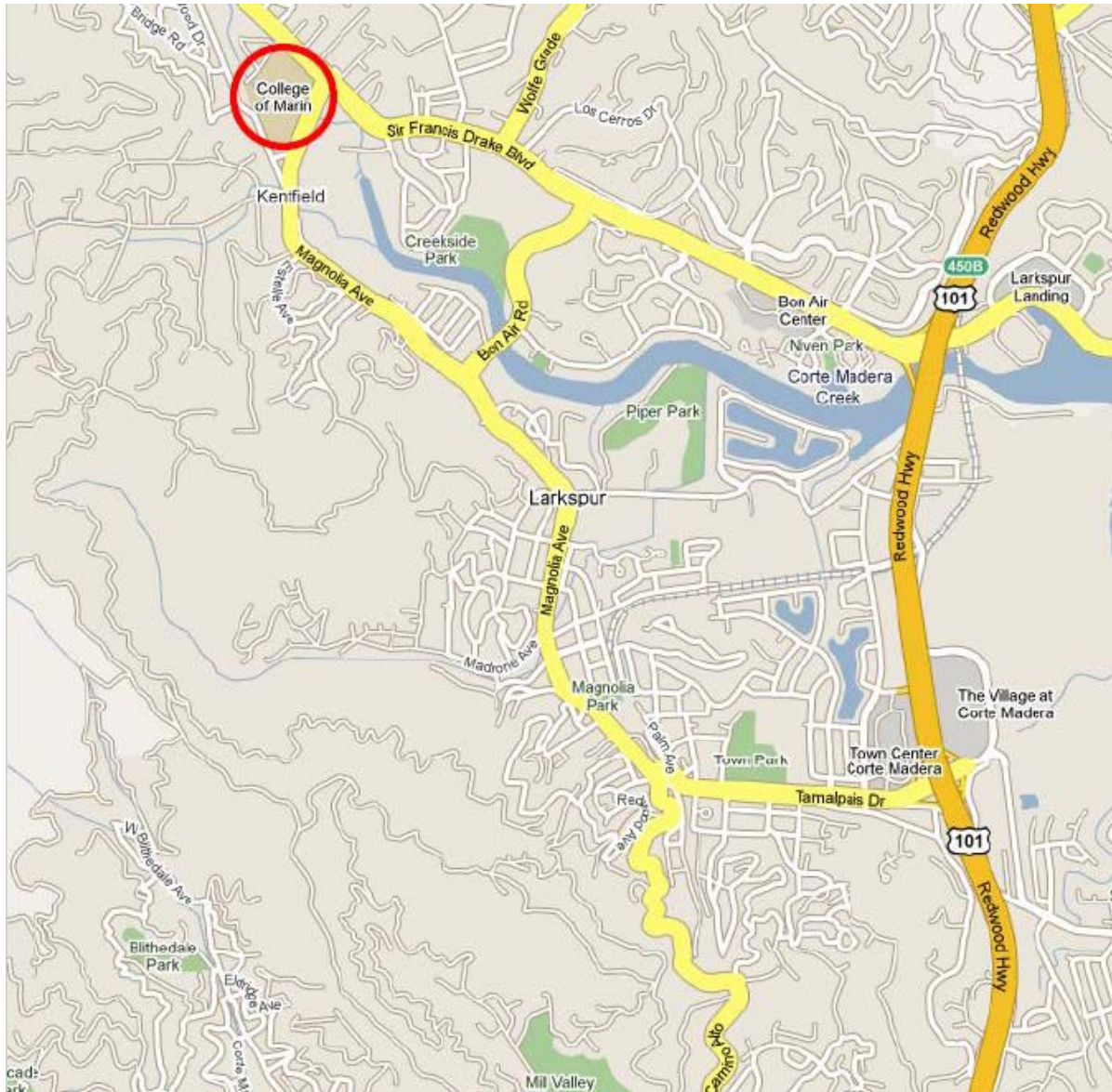


# College of Marin:



- Indian Valley campus, Novato
- Kentfield campus, Kentfield

# Gateway Project, Kentfield Campus



- Kentfield campus
- Approximately 2 miles east of 101
- Corner of Sir Frances Drake and College Ave.



# Campus Information

- Kentfield Campus (KTD) - Kentfield
  - Built - 1926
  - Acreage – 87 Acres / 373,806 sf / 18 Buildings
  - Parking – 1,774 Spaces





# Gateway Project Program

- Total ASF: 35,700
  
- Summary of program:
  - Office: 13,035 ASF
  - Lecture: 14,282 ASF
  - Lab: 6,539 ASF
  - Library: 1,720 ASF
  - Other: 130 ASF
  - Child Care Center TBD
  
- Childcare Center removed from program.



# Gateway Project Budget

- Total Construction Budget:
  - Approximately \$30M
- Total Project Budget:
  - Approximately \$39.0M



# Preliminary Selection Schedule

- Tuesday, July 14 Mandatory Pre-Qualifications Conference
- Thursday, July 16 Firms to submit written questions
- Tuesday, July 21 District will respond to written questions
- Tuesday, July 28 SOQs are due in the Swinerton Management and Consulting Kentfield office (new location in parking lot 11 – 700 College Ave, Bldg PE-8).
  
- Monday, August 3 District will announce up to 10 qualified firms to proceed to Step 2
- Wednesday, August 5 Long list interviews
- Thursday, August 6 Long list interviews
- Monday, August 10 District will announce short list (5 firms to proceed to Step 3)
- Tuesday, August 18 Second Mandatory (Pre-Competition) Conference (short listed teams only)
  
- Tuesday, August 25 Board of Trustees awards short-form competition contracts to finalists
  
- Weeks of Sep 7 and 21 Confidential informal meeting with each finalist
- Week of Oct 12 Final presentations of design concepts
- Monday, October 26 District will announce selected architectural team
- Tuesday, November 17 Board of Trustees will award professional services contract to selected team



# Three Step Selection Process

- **Step 1 – Request for Qualifications (RFQ) / Statement of Qualifications (SOQ)**
  - Follow instructions
  - Submit questions
  
- **Step 2 – Long-listing**
  - No presentation materials
  - Intent is to discuss design process and work relationships
  
- **Step 3 – Design Competition**
  - Selection based on stated criteria



# Important Points

- Follow all instructions
- Individual meetings with District or Swinerton personnel are prohibited now through the selection process (*except in Step 2 interviews*)
- ALL materials and information needed are on the College's website [www.marin.edu](http://www.marin.edu)



# Timeline

- SOQs Due – Tuesday, July 28, 2009
  - Address questions to:  
[Elizabeth.Bornstein@marin.edu](mailto:Elizabeth.Bornstein@marin.edu)
  - Sealed submissions can be hand delivered to Swinerton or sent to PO Box (see SOQ for details)
    - *700 College Ave, Bldg PE-8 (Portable buildings behind new PV carport structures).*





# Questions and Answers

V-Anne Chernock  
Director of Modernization

Swinerton Management and Consulting  
Leigh Sata, Program Manager  
Elizabeth Bornstein, Senior Project Assistant  
(415) 884-3139  
Elizabeth.Bornstein@marin.edu



**Marin Community College District  
Measure C Bond Modernization Program**



**Qualifications Matrices**

**Matrix A: Project Qualifications**

Complete matrix by filling in spaces as indicated below.

Project	DSA Oakland	Higher education	Community college	LEED certified or applied for	\$30-\$40 million CV	Smart classrooms	Offices	Auditorium / theater	Computer labs
1.									
2.									
3.									
4.									
5.									
For additional projects, add sheet(s)									

**Project:** List most relevant five (5) projects on first page, such that they can be readily cross-referenced against project description sheets. Add sheets, if desired, for more than five (5) projects

**DSA Oakland:** This project was reviewed and approved by the Oakland office of the Division of the State Architect ("x")

**Higher education:** This project was designed for a college or university ("x")

**Community college:** This project was design for a California community college ("x")

**LEED:** This project was design to LEED standards, was registered for LEED certification, and/or is LEED certified (specify which)

**\$30 - \$40 m CV:** The construction value of this project was/is between \$30 million and \$40 million in 2009 dollars (specify approximate value)

**Smart classrooms:** This project includes "smart" classrooms (specify how many)

**Offices:** This project includes faculty, staff, and/or administrative offices (specify how many)

**Auditorium/theater:** This project includes an auditorium and/or theater (specify how many seats)

**Computer labs:** This project includes computer labs (specify how many)



**Marin Community College District  
Measure C Bond Modernization Program**

**Matrix B: Firm / Individual Qualifications**

Note: for each *firm* identified on the team, indicate with an "x" which project(s) the firm worked on. Add lines as needed. Projects must match those identified in the qualifications statement. Add lines as needed.

Name of Firm / Role on Project	Project 1	Project 2	Project 3	Project 4	Project 5	Other projects

Note: for each *individual* identified in the qualifications statement, indicate with an "x" which project(s) the person worked on. Add lines as needed. Projects must match those identified in the qualifications statement. Add lines as needed.

Name of Individual	Project 1	Project 2	Project 3	Project 4	Project 5	Other projects