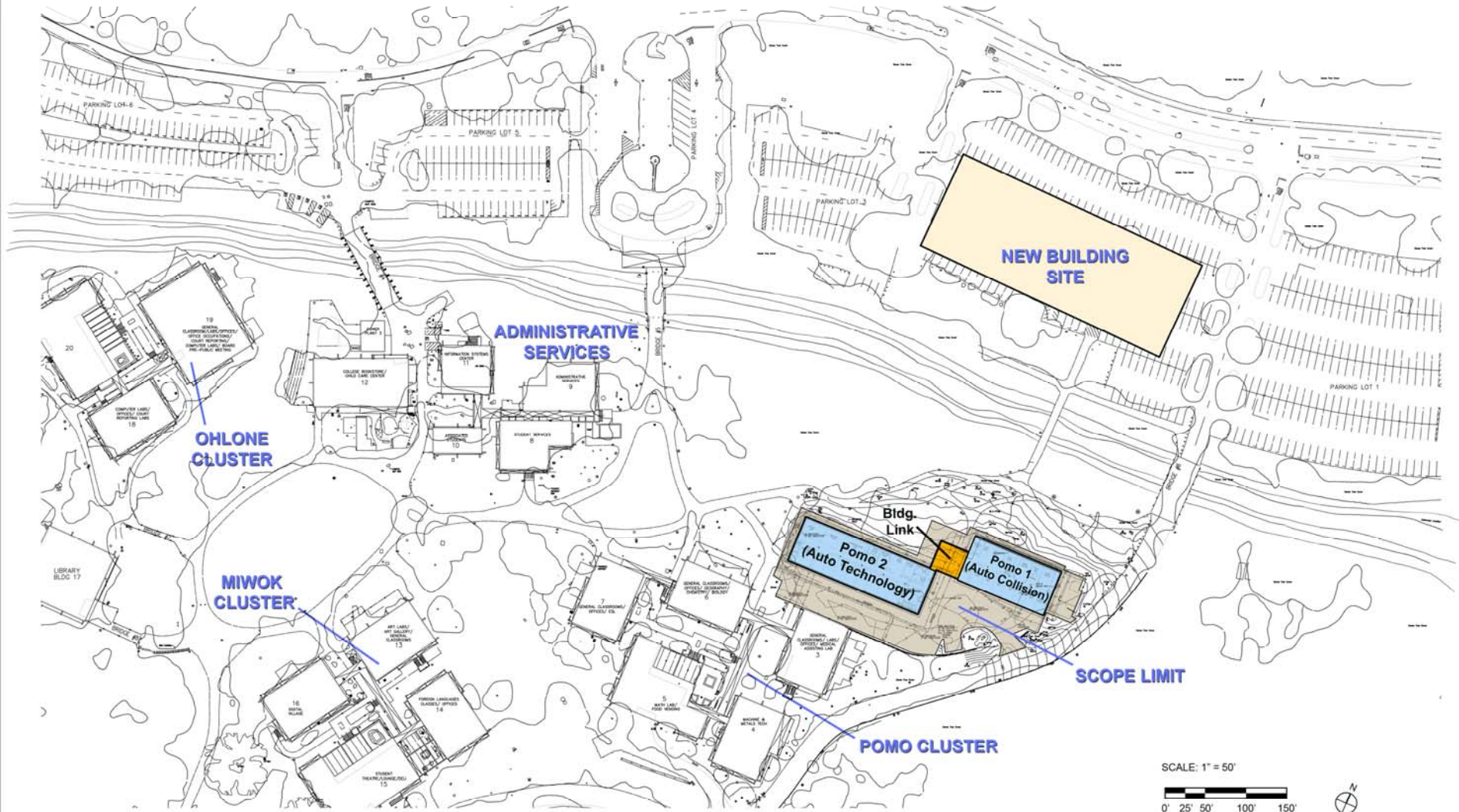
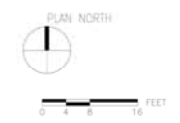
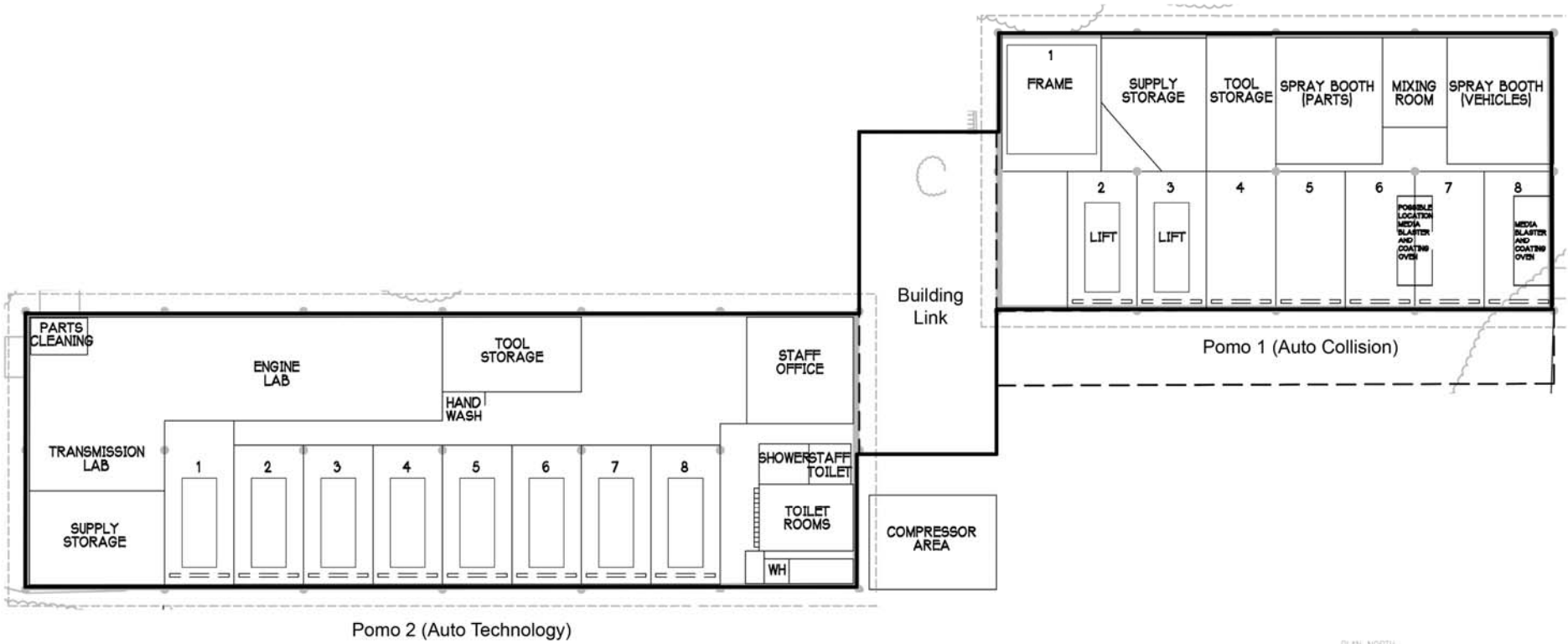
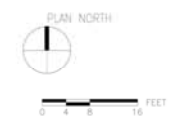
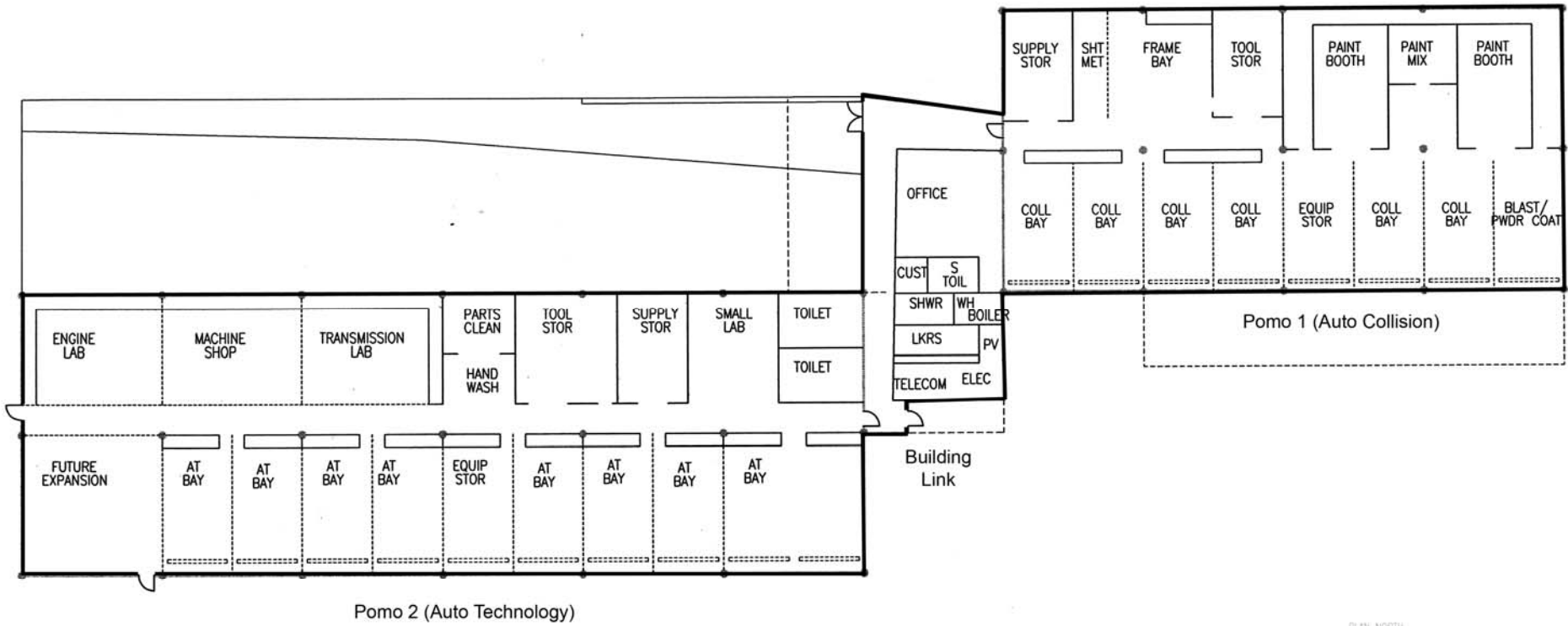


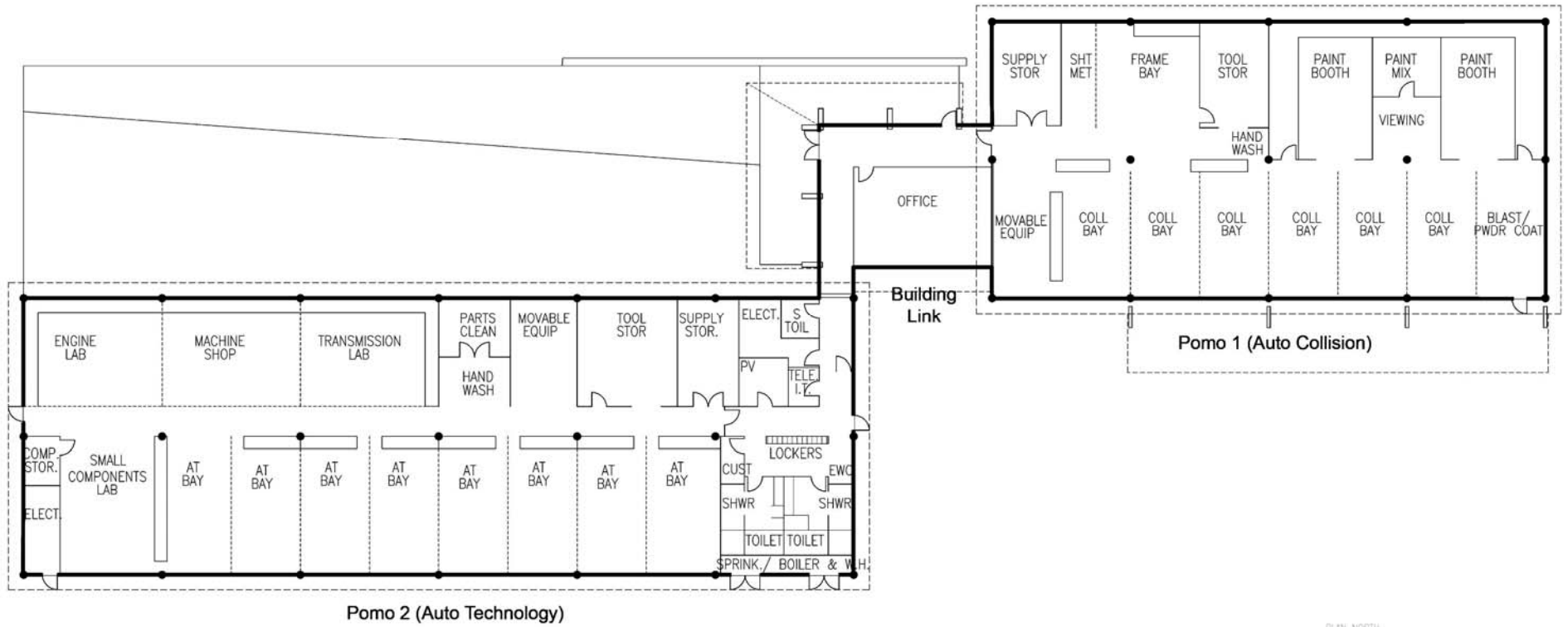
Marin Community College District
Board of Trustees
Presentation

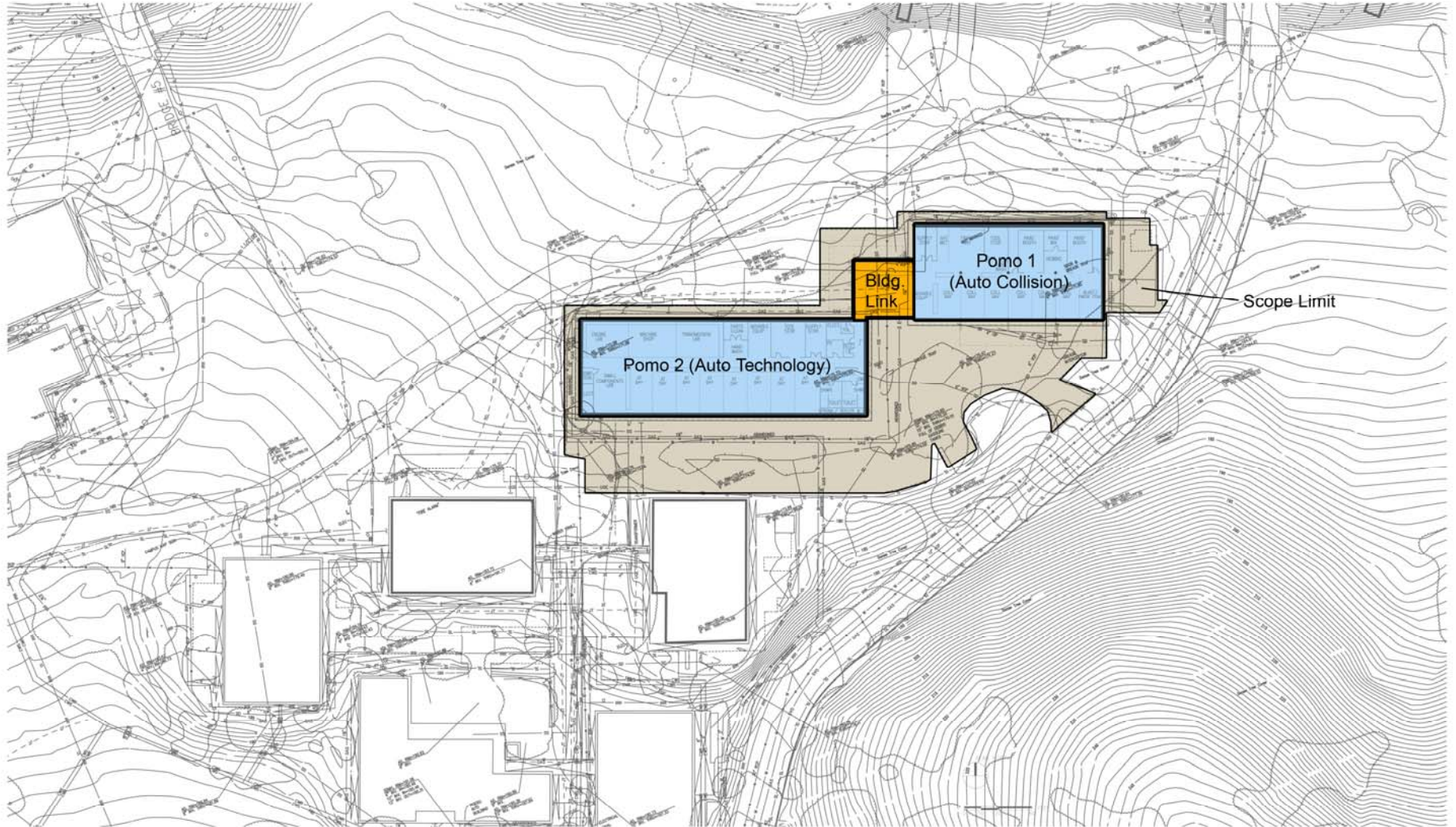
Transportation Technology Complex
Conceptual Plans
Tuesday, March 27, 2007

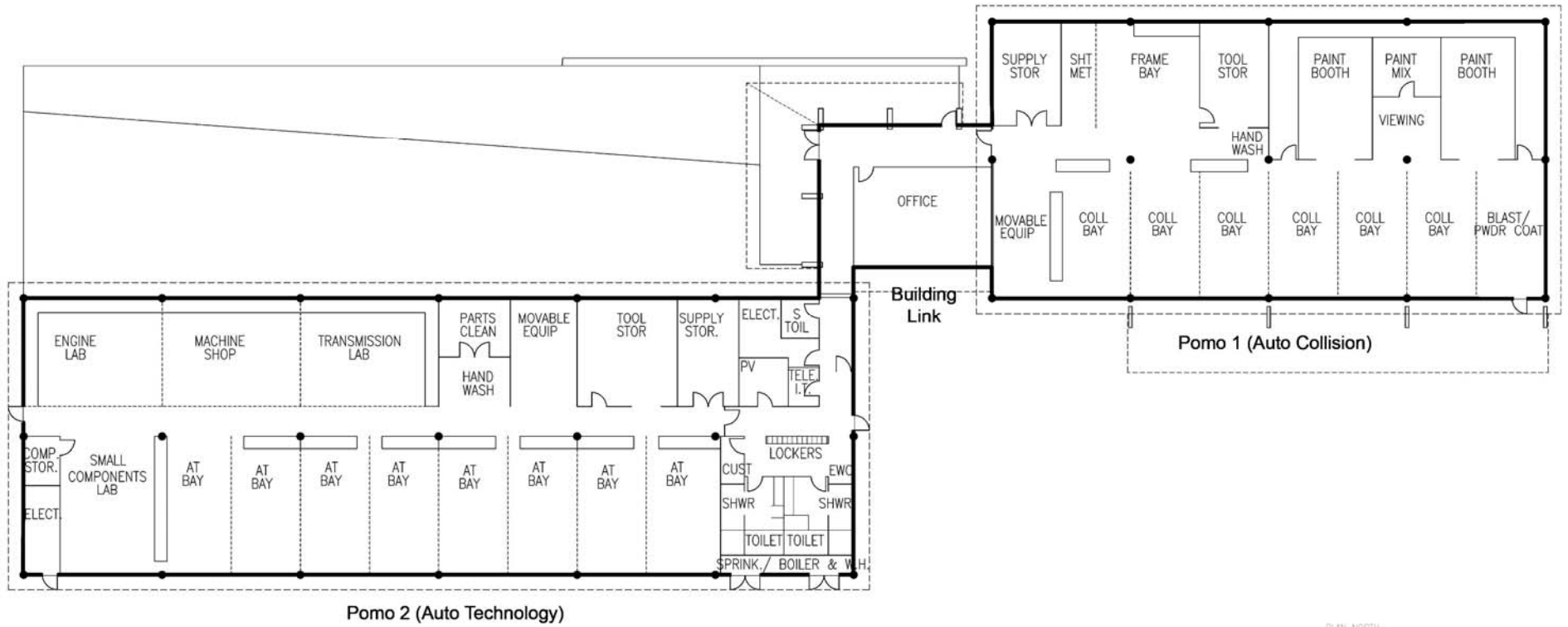


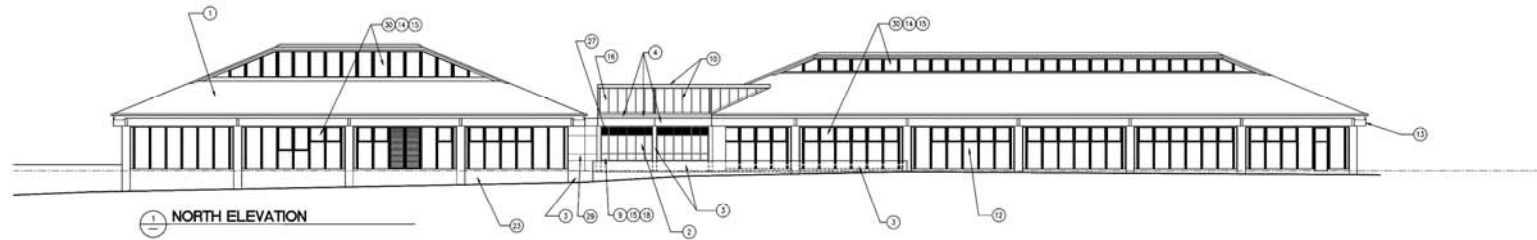




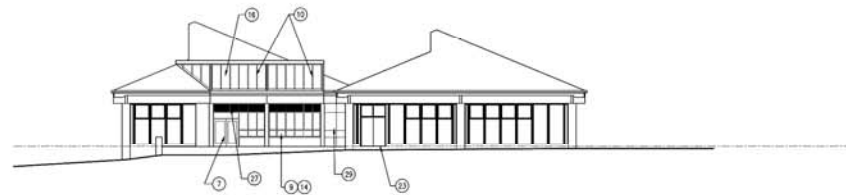




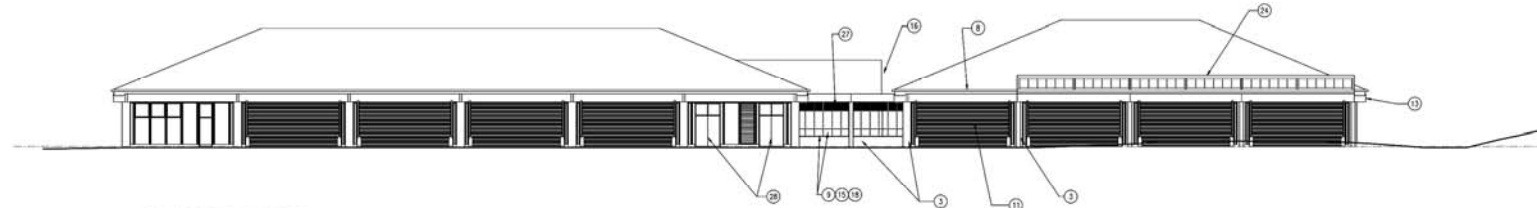




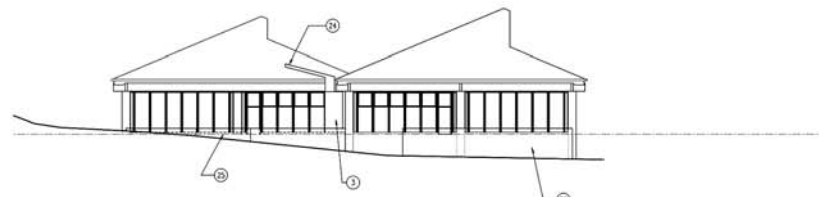
1 NORTH ELEVATION



2 WEST ELEVATION



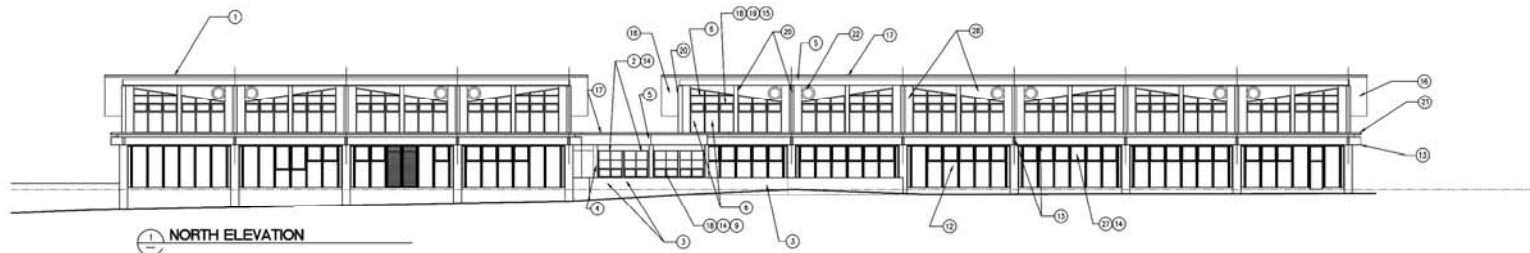
3 SOUTH ELEVATION



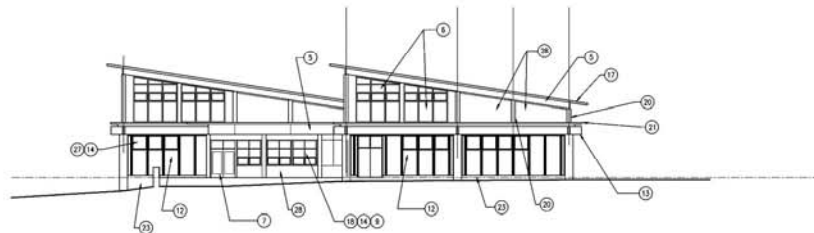
4 EAST ELEVATION

NUMBERED NOTES

1. KYMAR FINISHED STANDING SEAM 22 GA. METAL ROOF
2. KYMAR FINISHED STOREFRONT SYSTEM
3. MEDIUM MEDIA BLAST ARCHITECTURAL CONCRETE
4. KYMAR FINISHED 125 BRASS METAL ALUMINUM
5. KYMAR FINISHED COMPOSITE ALUMINUM PANEL (NOT USED)
6. TRANSLUCENT POLY-CARBONATE PANELS AND ALUMINUM FRAMING SYSTEM AS MANUFACTURED BY KALLIMALL (CUSTOM SIZE TO FIT MODULES), MINIMUM R20 AND 20% LIGHT TRANSMITTANCE. (NOT USED)
7. KYMAR FINISHED ALUMINUM ENTRY DOORS
8. KYMAR PREFINISHED OUTLETS, PROVIDE PAINTED GALV DOWNSPOUTS (NOT SHOWN)
9. KYMAR FINISHED OPERABLE VENTS, SET INSIDE STOREFRONT GLAZING SYSTEM
10. KYMAR FINISHED 125 ALUMINUM BRASS METAL
11. EXISTING DOORS AND WINDOWS AT EXISTING WALLS NOT SHOWN (PAINT EXISTING HOLLOW METAL DOORS AND FRAMES) PROVIDE MOLDDED CORING OVERHEAD DOORS WITH VISION PANELS)
12. EXISTING 1 X 6 REDWOOD, PLUG REPAIR EXIST BRID-SHAPED BOARDS, CLEAN STAIN AND SEAL JOINTS
13. PROVIDE SEALER AND TRANSPARENT STAIN AT EXISTING GLULAM BEAMS, PROVIDE NEW BLACK ANODIZED DRG ALUMINUM CAPS AT TOP SURFACES OF EXPOSED GLULAM
14. PROVIDE MOTORIZED OPERATION
15. 1/2" PVC SOLIDVA TRIMED GLAZING, TYP
16. 22 GA KYMAR PREFINISHED METAL ON PRIMED AND PAINTED REDWOOD BRITES OVER KYMAR FINISHED ALUMINUM LAMINATE ON PHENOLIC RESIN CORE(ALUOCORONOL), FINISH TOP SIDE WITH STANDING SEAM ROOF TO MATCH ITEM NUMBER 1.
17. KYMAR FINISHED FRAMA TO MATCH ROOF (NOT USED--SEE NUMBER 8)
18. 2" NON-THERMALLY PROJECT-OUT ANNING-TYPE ALUMINUM WINDOWS TO MATCH KYMAR FINISHING SYSTEM
19. PROVIDE MOTORIZED OPERATION INTERLUMKED WITH EXHAUST FANS (NOT USED)
20. KYMAR FINISHED ALUMINUM COLUMN COVER AND CLOSURES (NOT USED)
21. KYMAR-FINISHED OPEN ALUMINUM "TRELLIS" FROM RECTANGULAR ALUMINUM SHAPES AND STEEL SUPPORTS (NOT USED)
22. CUSTOM KYMAR-FINISHED SHROLO AND IN-LINE EXHAUST FAN (NOT USED)
23. EXPOSED EXISTING CONCRETE WALL (FOUNDATION)
24. CANTILEVERED CANOPY
25. EXISTING CONCRETE RETAINING WALL
26. MEDIUM MEDIA BLAST CONCRETE MECHANICAL CLOSURE
27. KYMAR FINISHED ALUMINUM LAMINATE ON PHENOLIC RESIN CORE--GLAZE INTO STOREFRONT SYSTEM (DOWN SHADE)
28. HW FLOOR, LOUISERS AND WALL SYSTEM TO MATCH EXISTING
29. 125 KYMAR FINISHED ALUMINUM PANELS OVER WEATHER BARRIER, GYP SHEATHING AND METAL STUD FRAMING
30. REPLACE EXISTING WINDOWS WITH 2" NON-THERMALLY BROKEN PROJECT-OUT HOPPER-TYPE ALUMINUM WINDOWS TO MATCH STOREFRONT SYSTEM



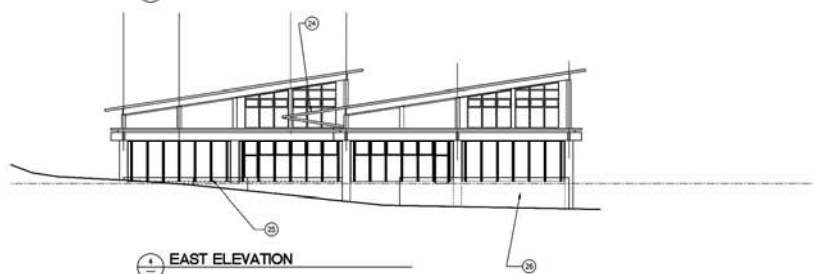
1 NORTH ELEVATION



2 WEST ELEVATION



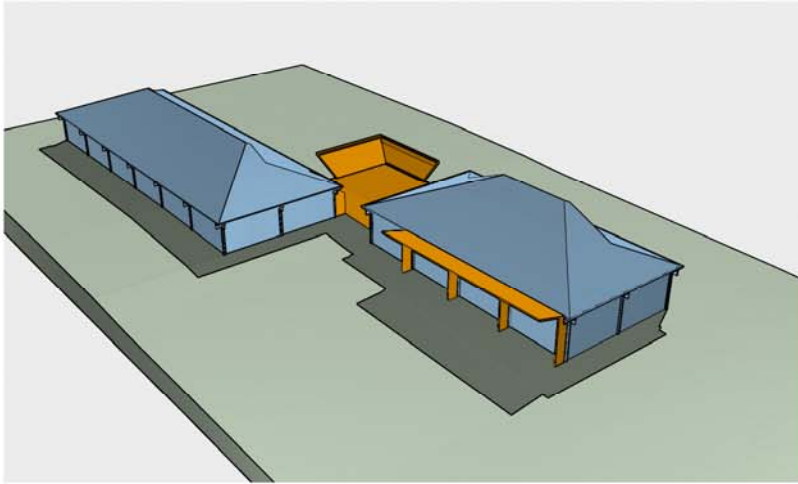
3 SOUTH ELEVATION



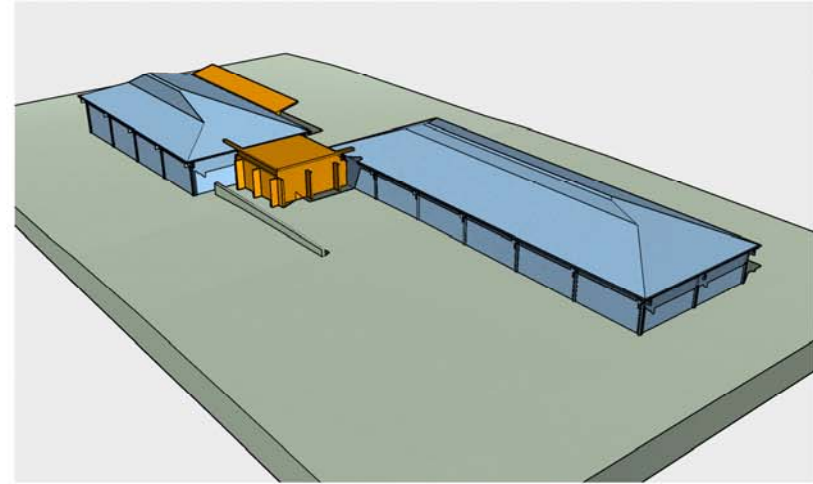
4 EAST ELEVATION

NUMBERED NOTES

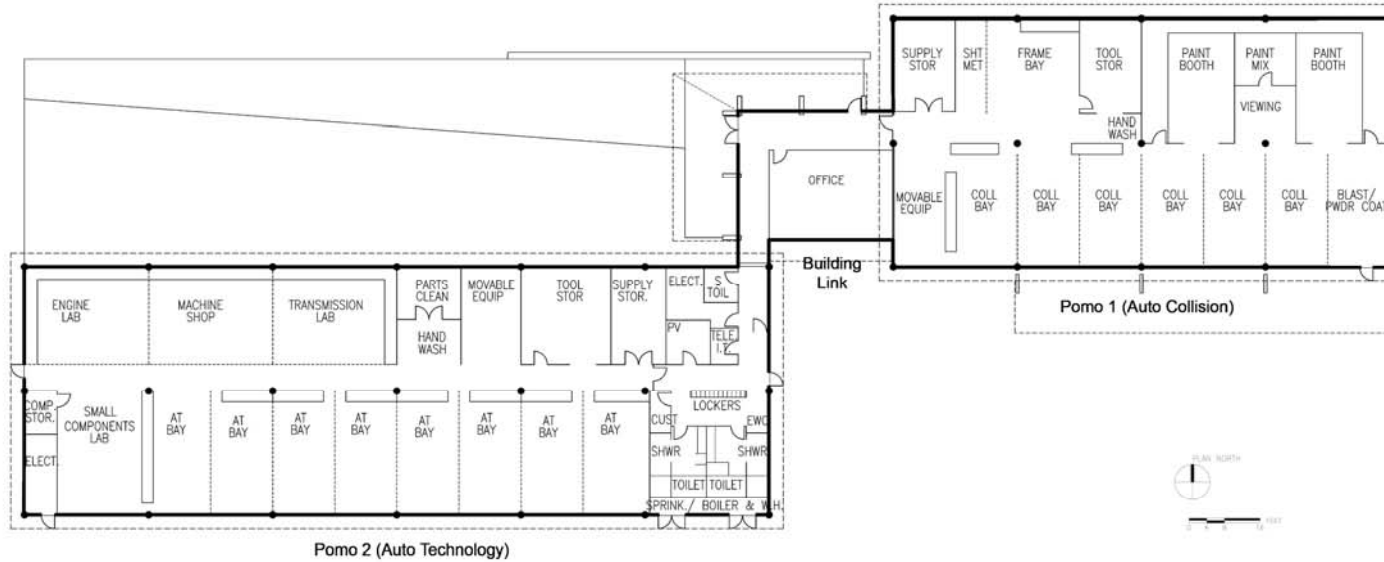
1. KYNAR FINISHED STANDING SEAM 22 GA METAL ROOF
2. KYNAR FINISHED STOREFRONT SYSTEM
3. ARCHITECTURAL CONCRETE
4. KYNAR FINISHED 125 BRAKE METAL ALUMINUM
5. KYNAR FINISHED 125 ALUMINUM PANELS
6. TRANSLUCENT POLYCARBONATE PANELS AND ALUMINUM FRAMING SYSTEM AS MANUFACTURED BY KALWALL (CUSTOM SIZE TO FIT MODULES, WINDOW 120 AND 208 LIGHT TRANSMITTANCE)
7. KYNAR FINISHED ALUMINUM ENTRY DOORS
8. KYNAR FINISHED METAL DOWNSPOUTS AND GALV 22 GA SHEET METAL GUTTERS, PAINTED (NOT SHOWN)
9. KYNAR FINISHED OPERABLE VENTS, SET INSIDE STOREFRONT GLAZING SYSTEM
10. KYNAR FINISHED 125 ALUMINUM BRAKE METAL
11. REPLACE EXISTING COOLING DOORS WITH INSULATED COOLING OVERHEAD COOLING DOORS
12. EXISTING 1 X 8 REDWOOD, REPAIR BRUISED DAMAGE, PLUG HOLES, CLEAN, RESTAIN, AND SEAL
13. PROVIDE SEALER AND TRANSPARENT STAIN AT EXISTING GULLIAM BEAMS, PROVIDE NEW BLACK ANODIZED 200 ALUMINUM CAPS AT TOP SURFACES OF EXPOSED GULLIAM
14. NOT SHOWN
15. 1" PPG SOLIDIA INSULATED TINTED GLAZING WITH LOW-E COATING ON 2ND SURFACE
16. PAINTED GALV EXPOSED STEEL DECK AND PAINTED GALVANIZED STEEL OUTRIGGERS AND PERMETER CHANNEL AT SOFFIT
17. KYNAR FINISHED FASCIA TO MATCH ROOF
18. 2" THERMALLY-BROKEN PROJECT-OUT AWNING-TYPE ALUMINUM WINDOWS TO MATCH KYNAR FRAMING SYSTEM
19. PROVIDE MOTORIZED OPERATION INTERLINKED WITH EXHAUST FANS
20. KYNAR FINISHED ALUMINUM COLUMN COVER (ROUND) AND CLOSURES
21. KYNAR FINISHED OPEN ALUMINUM "TRUSS" FROM RECTANGULAR ALUMINUM SHAPES AND STEEL SUPPORTS
22. CUSTOM KYNAR-FINISHED SHOULDER AND IN-LINE EXHAUST FAN (FOUNDATION)
23. EXPOSED EXISTING CONCRETE WALL TO BE POWER WASHED.
24. ROOF EXTENSION (CANOPY)
25. EXISTING CONCRETE RETAINING WALL
26. MEDIUM MESH REBAR MECHANICAL VIBES CONCRETE ENCLOSURE WITH ACOUSTICAL PANELS AT INTERIOR FACE
27. REPLACE EXISTING WINDOWS WITH KYNAR-FINISHED ALUMINUM WINDOWS, PROJECT-OUT HOPPER, WITH 1" PPG SOLIDIA INSULATED TINTED GLAZING WITH LOW-E COATING ON 2ND SURFACE, TYPICAL
28. 22 GA KYNAR-FINISHED HORIZONTAL PREFORMED METAL SIDING WITH 2-INCH HIGH AND LOW CELL PROFILE X 1 3/4" DEEP.



View From Exterior Yard



View From Creek Side



College of Marin

Indian Valley Campus

SCHEMATIC 3D VIEWS (OPTION A)

Transportation Technology Complex

March 12, 2007

Hardison Komatsu Ivelich & Tucker

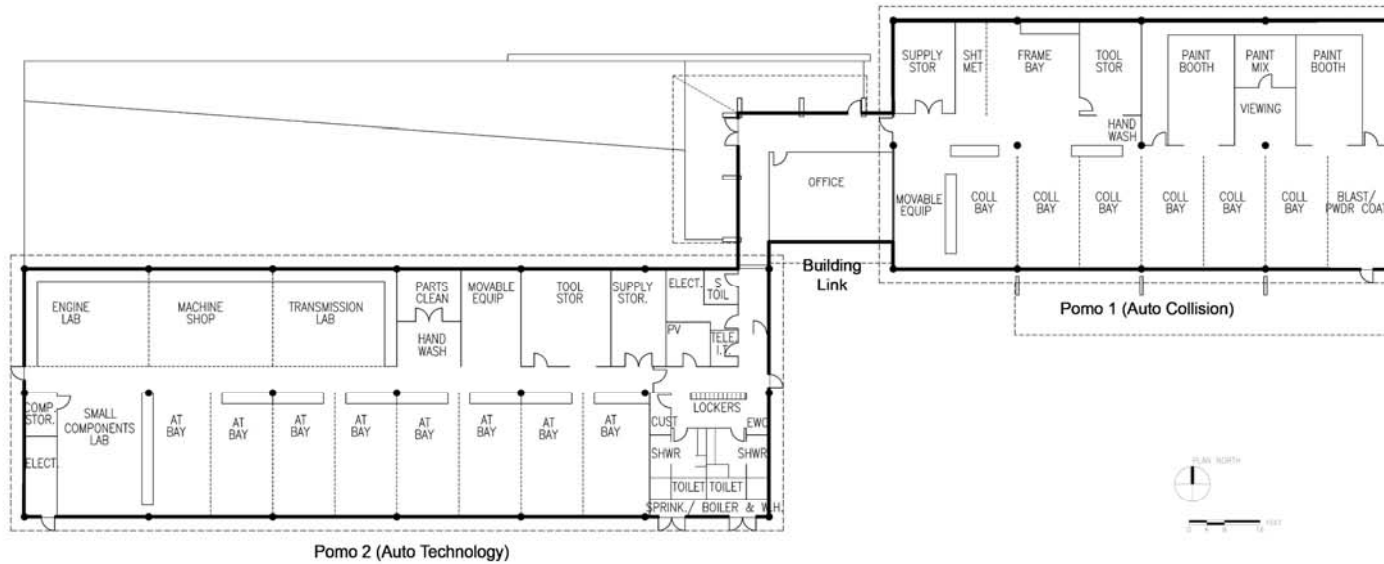




Entry From Exterior Yard



Entry From Creek Side



College of Marin

Indian Valley Campus

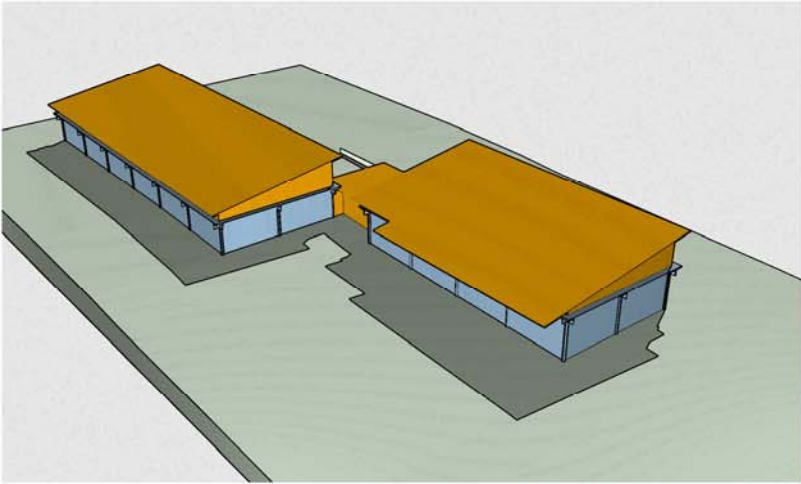
SCHEMATIC 3D VIEWS (OPTION A)

Transportation Technology Complex

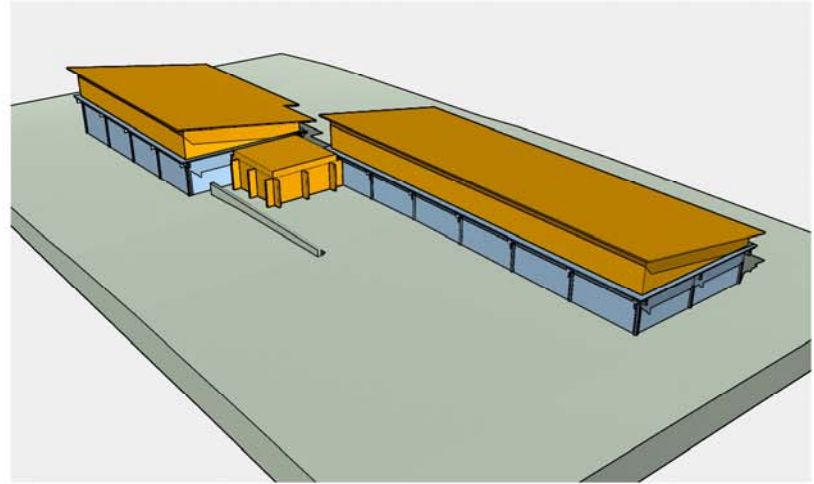
March 12, 2007

Hardison Komatsu Ivelich & Tucker

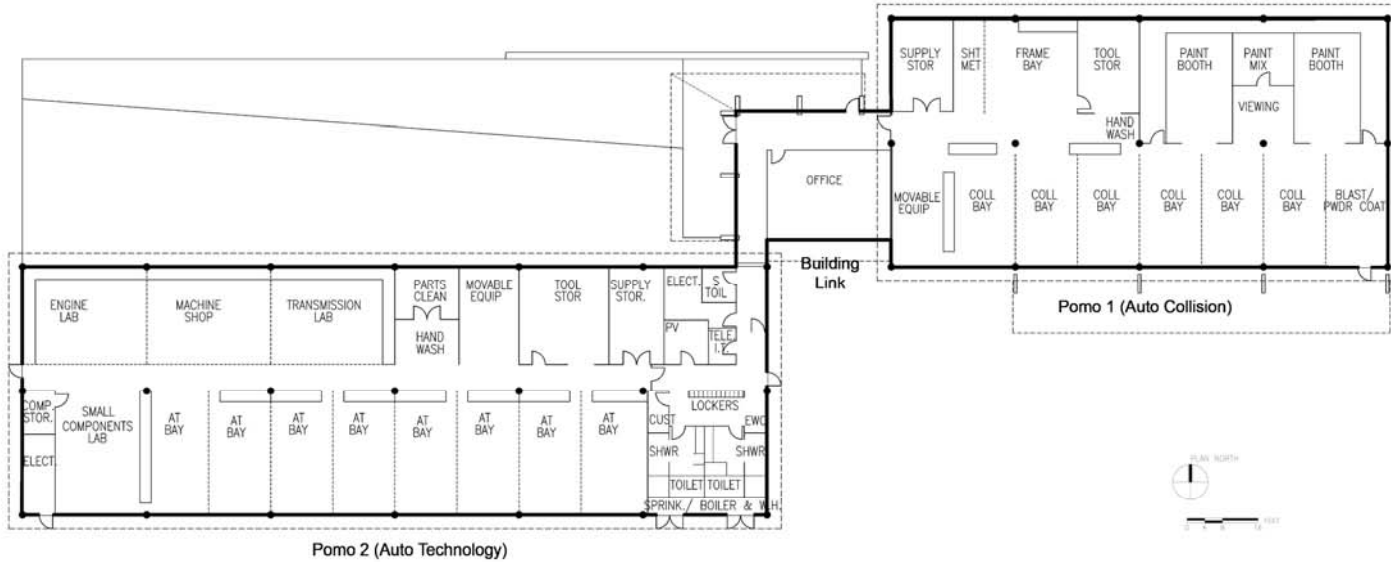




View From Exterior Yard



View From Creek Side



College of Marin

Indian Valley Campus

SCHEMATIC 3D VIEWS (OPTION B)

Transportation Technology Complex

March 12, 2007

Hardison Komatsu Ivelich & Tucker

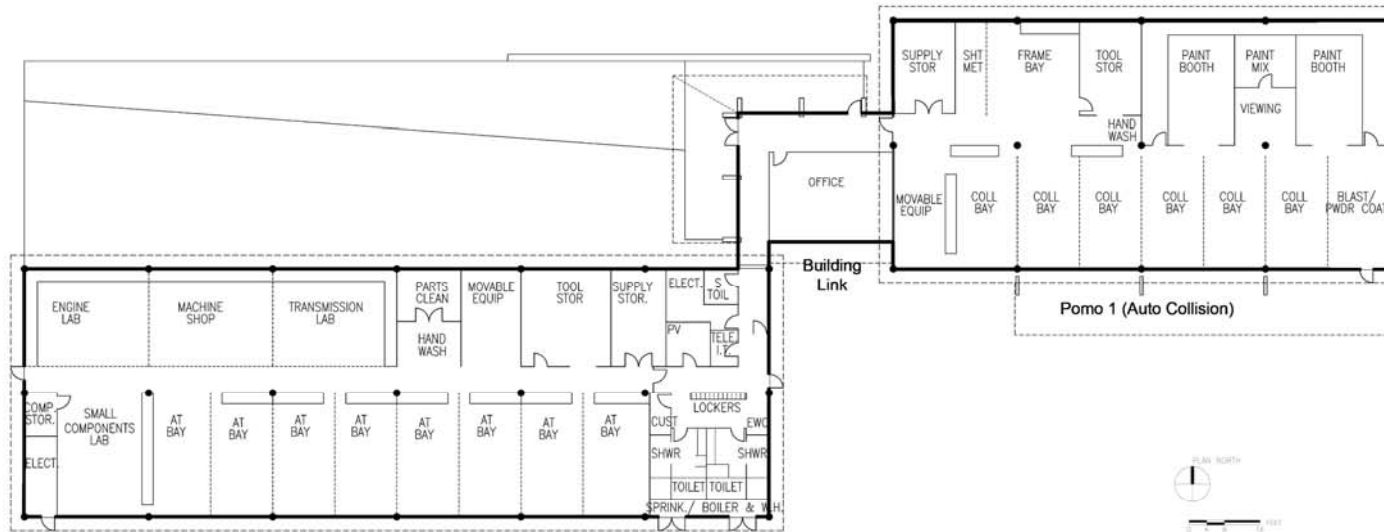




Entry From Exterior Yard



Entry From Creek Side



Pomo 2 (Auto Technology)

Pomo 1 (Auto Collision)