

Fine Arts Project Response to Student Concerns

Measure C Bond Program - Kentfield

For the Board of Trustees
Marin Community College District
January 15, 2008

Agenda

1. Design concerns
2. Related concerns
3. Student petition

1. Design Concerns

- Access will be diminished
- Classroom sizes will be reduced
- Hallways uncovered
- Not enough storage
- Not enough restrooms

1. Design Response

- Access will **meet all code requirements**
- Classroom sizes will **meet State standards**
- Hallways **will be covered**
- Storage **will be added as necessary**
- **Every floor will have restrooms**

Architects will provide details a bit later

2. Related Concerns

- A. Title V
- B. Not enough student participation
- C. Not enough parking

A. Title V

- Bond is covered under Proposition 39, not Title V

B. Student Participation

- All meetings have been open
 - *Board of Trustees (monthly)*
 - *User Groups (eight + meetings to date)*
 - *District Modernization Committee (semi-monthly)*
- Students have been invited
- Special forum December 3, 2007
- Letter to Student Senate January 5, 2008
- More participation is welcome

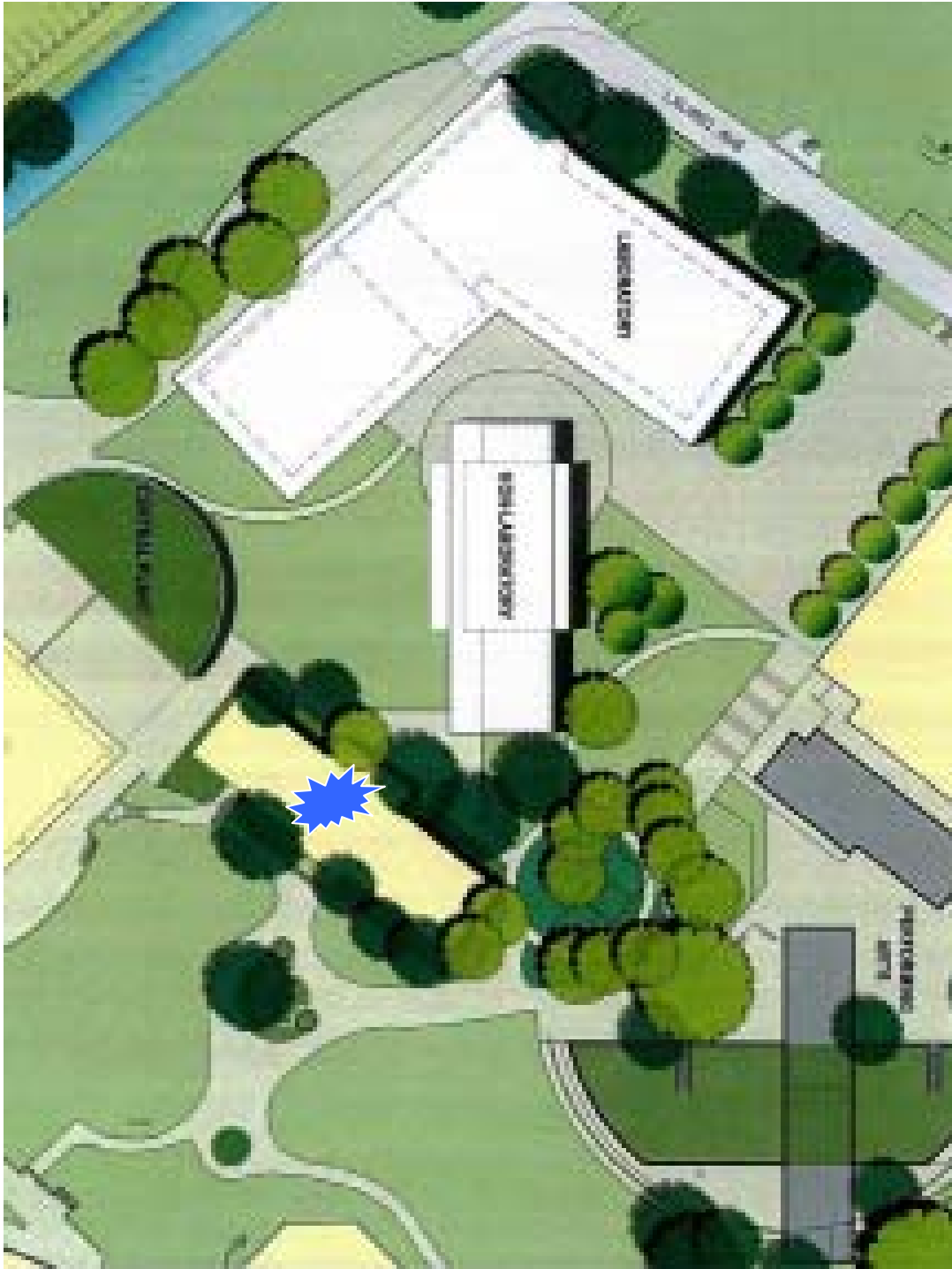
C. Not enough parking

- 1,800 parking spaces at Kentfield
- Reduced Parking Lot 4 from 158 to 38
- Reduced other parking anticipated ~ _____
- Normal peak occupancy 42%
- Parking Task Force has been formed to mitigate the reduction in parking

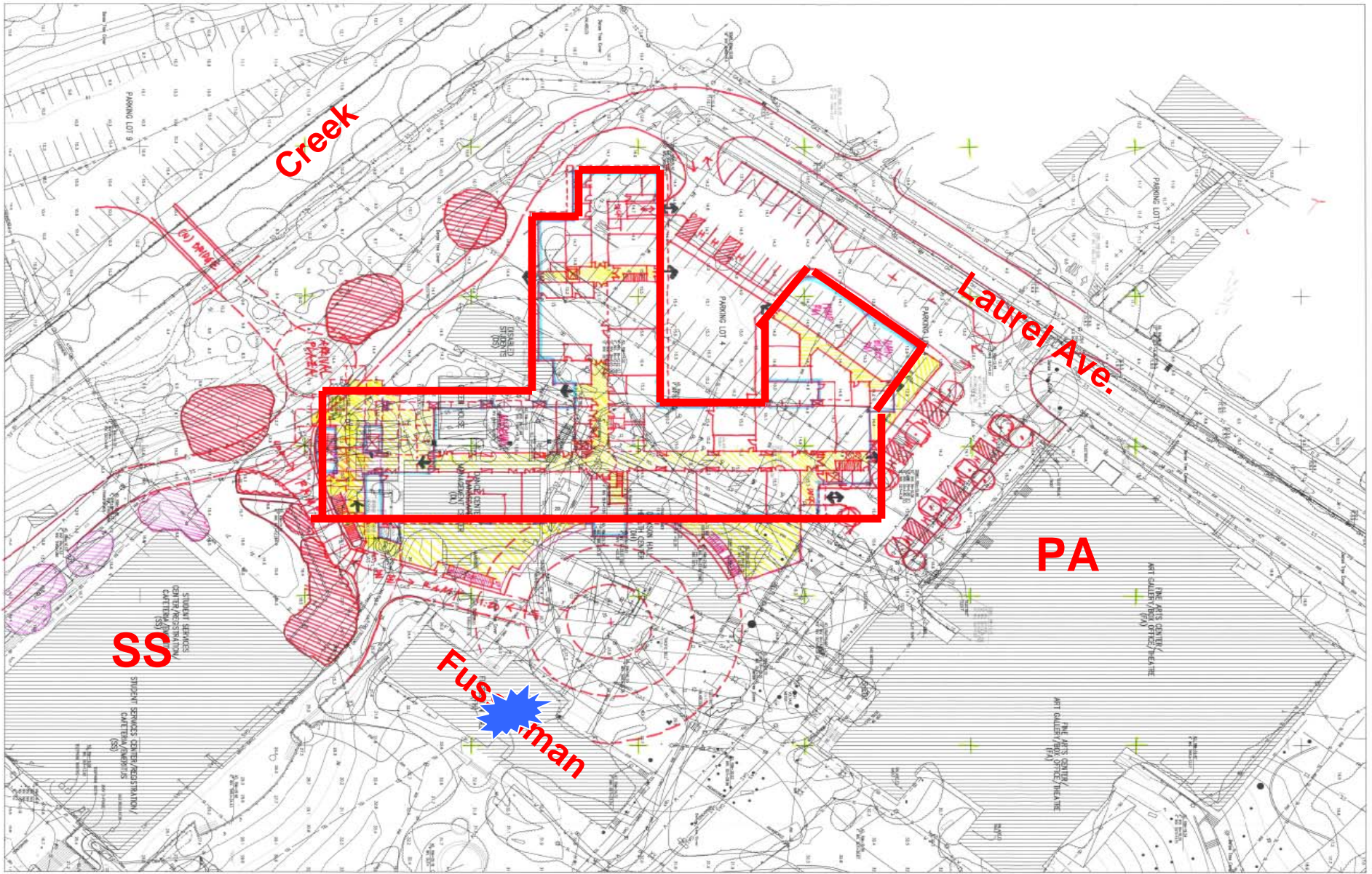
Parking Lot 4



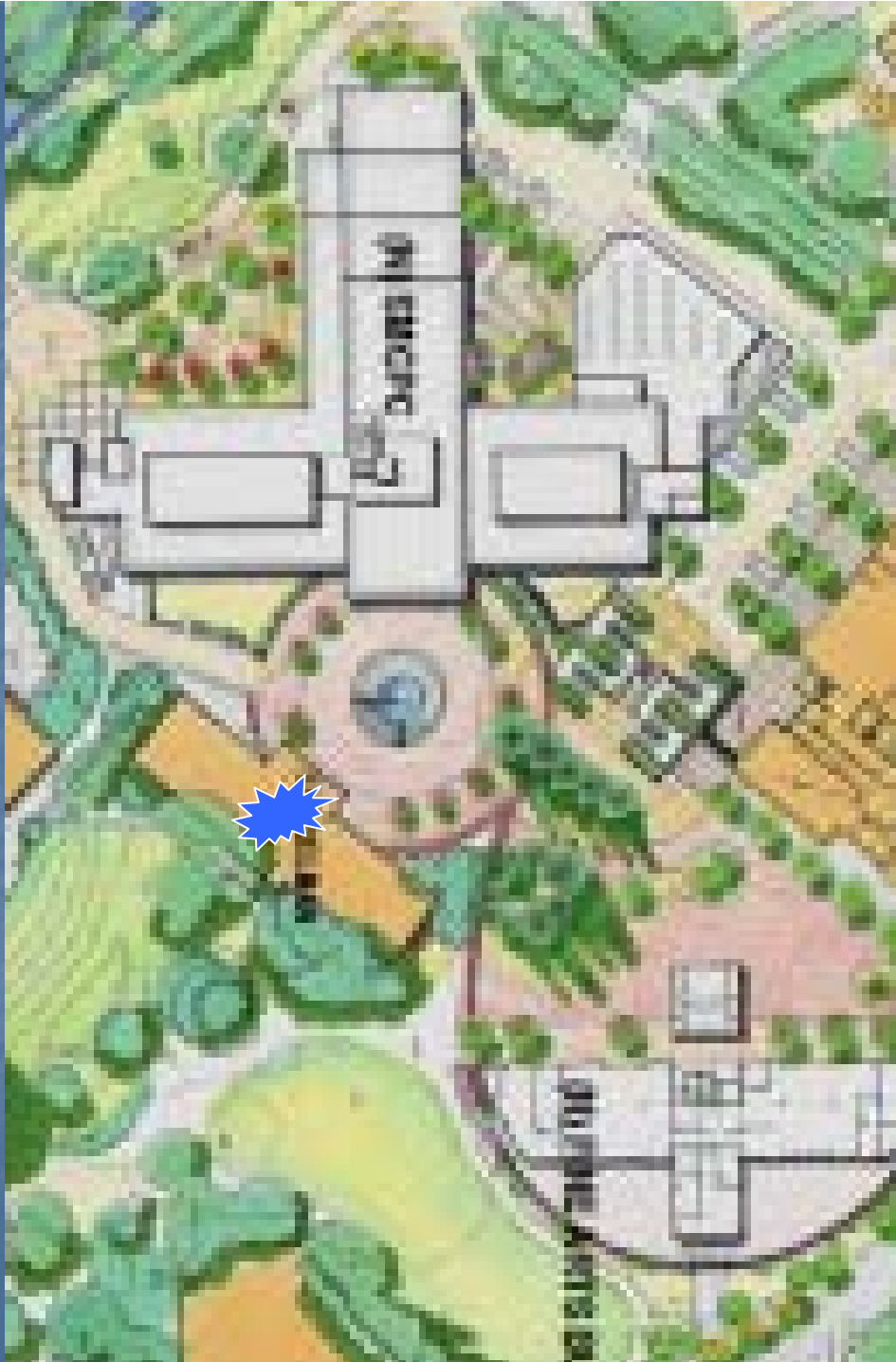
October 2006



January
2007



July 2007



August
2007

3. Petition request

- “Stop the **fast tracking** of the proposed Fine Arts Building until it is determined if a building that meets the **promises of the bond** will be designed and built.”

All schedules are on track as originally planned

Design start to DSA submittal:

- IVC Main Bldg: 14 months (\$16.7 m)
- PE Complex: 18 months (\$15.5 m)
- Fine Arts Bldg: 21 months (\$12.6 m)

There is no fast-tracking

Cost to slow FA design: \$84,000/month

“Promises of the bond”

- “Increase classroom and facility capacity for academic and job training classes, including math, nursing and medical training, science labs, child development, dental health, physical and health education facilities, **graphic, fine and performing arts**; facilities management center; library-research-learning resource center; construct ‘smart classrooms’ for enhanced distance learning.”

But:

- “Based on the final costs of each project, certain of the projects described above will be delayed or **may not be completed**. In such case, bond money will be spent on only the **most essential** of the projects listed above.”

Defined first as “most essential”

1. Science/Math/Central Plant
2. Diamond PE Complex

*By consensus (District Modernization
Committee & Board)*

Ranked **next** as “most essential”

1. Gateway Complex (48 points)
2. Learning Resource Center (25)
3. **Fine Arts Building (24)**
4. Performing Arts Building (16)

Then:

- Learning Resource Center was dropped before Fine Arts because
 - Fine and Performing Arts buildings need to be done together
 - LRC budget was smaller

7 Bond Building Projects

- Science/Math/CP Complex (new) (\$50 m)
- Gateway Complex (new) (\$24 m)
- PE Complex (mod) (\$16 m)
- IVC Main Building (new) (\$16 m)
- Fine Arts Building (new) (\$13 m)
- Performing Arts Building (mod) (\$12 m)
- IVC TransTech Complex (mod) (\$ 9 m)

Revised Design Presentation Fine Arts Building

By Marcy Wong/Donn Logan
Architects

Comments and Questions